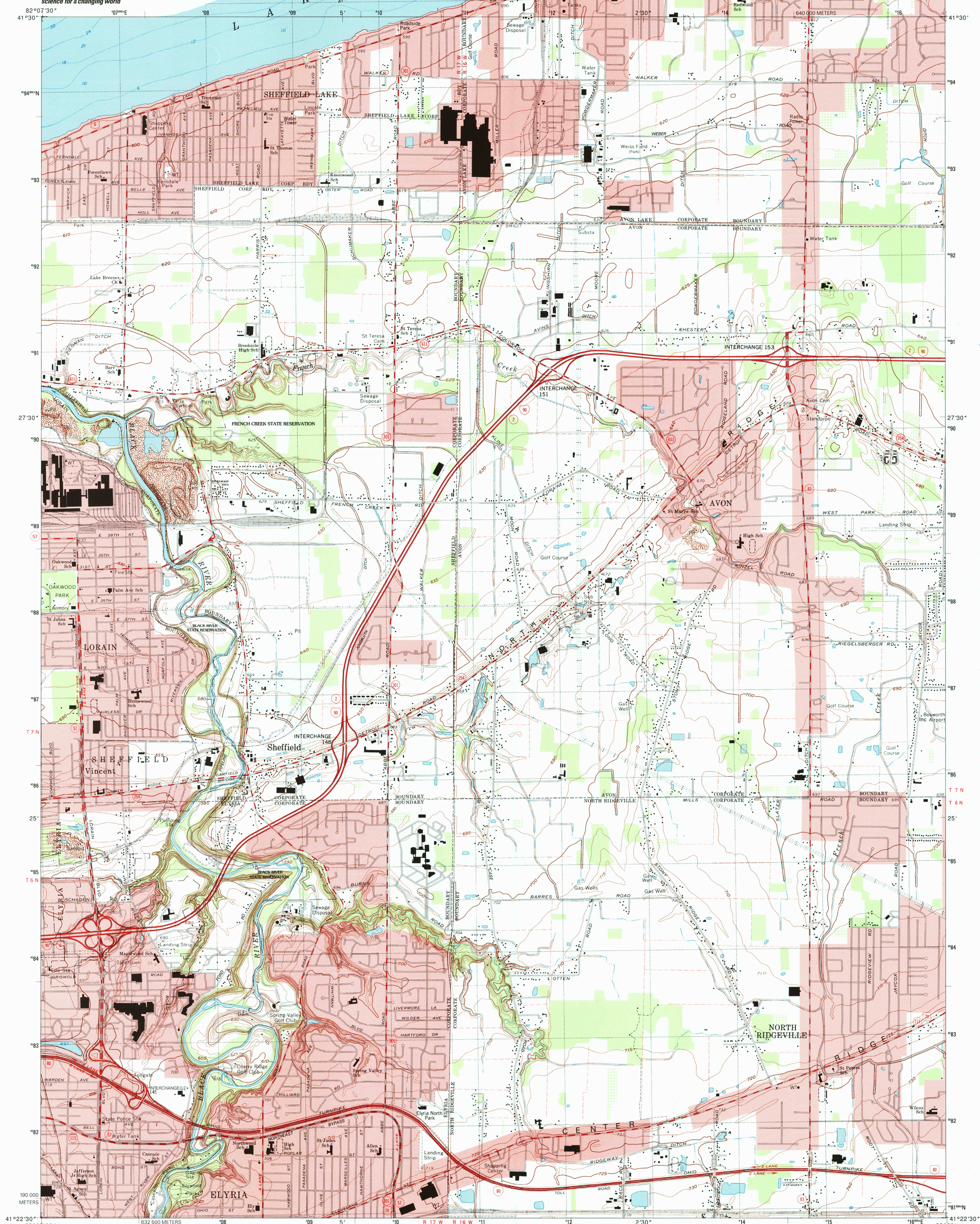


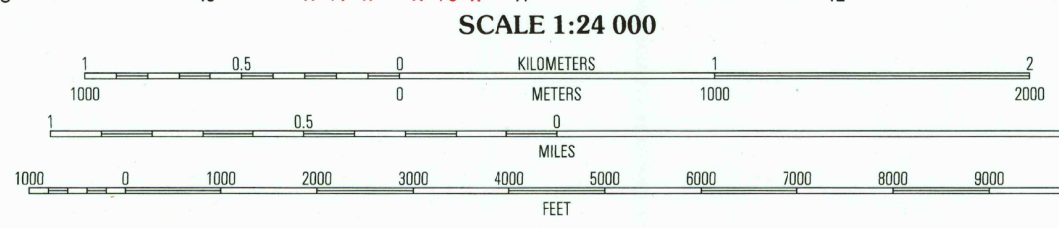
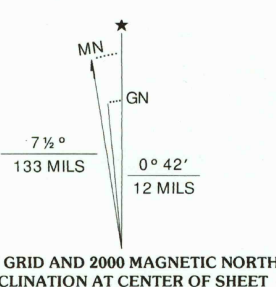


U.S. DEPARTMENT OF THE INTERIOR
U.S. GEOLOGICAL SURVEY

AVON QUADRANGLE
OHIO-LORAIN CO.
7.5-MINUTE SERIES (TOPOGRAPHIC)



Produced by the United States Geological Survey
Topography compiled 1953. Planimetry derived from imagery taken 1994 and other sources. Public Land Survey System and survey control current as of 1963.
Selected hydrographic data compiled from NOS Chart 35 (1959). This information is not intended for navigational purposes.
North American Datum of 1983 (NAD 83). Projection and 1000-meter grid: Universal Transverse Mercator, zone 17. 2500-meter ticks: Ohio Coordinate System of 1983 (north zone). North American Datum of 1927 (NAD 27) is shown by dashed corner ticks. The values of the shift between NAD 83 and NAD 27 for 7.5-minute intersections are obtainable from National Geodetic Survey NADCON software.
There may be private inholdings within the boundaries of the National or State reservations shown on this map.
Entire area lies within the Connecticut Western Reserve. Land lines established by private subdivision of the Connecticut Western Reserve. Landmark buildings verified 1963.



CONTOUR INTERVAL 5 FEET
NATIONAL GEODETIC DATUM OF 1929
TO CONVERT FROM FEET TO METERS, MULTIPLY BY 0.3048
DEPTH CURVES AND SOUNDINGS IN FEET
REFERENCE LEVEL 568.6 FEET; INTERNATIONAL GREAT LAKES DATUM
THE RELATIONSHIP BETWEEN THE TWO DATUMS IS VARIABLE
THIS MAP COMPLIES WITH NATIONAL MAP ACCURACY STANDARDS
FOR SALE BY U.S. GEOLOGICAL SURVEY, P.O. BOX 25286, DENVER, COLORADO 80225
A FOLDER DESCRIBING TOPOGRAPHIC MAPS AND SYMBOLS IS AVAILABLE ON REQUEST

ROAD CLASSIFICATION

Primary highway
hard surface
Light-duty road, hard or improved surface
Secondary highway
hard surface
Unimproved road
Interstate Route
U.S. Route
State Route

QUADRANGLE LOCATION

1	2	3	4
5	6	7	8

AVON, OH
1994
NIMA 4566 1-N-E-Serie V852

9178060719144501