

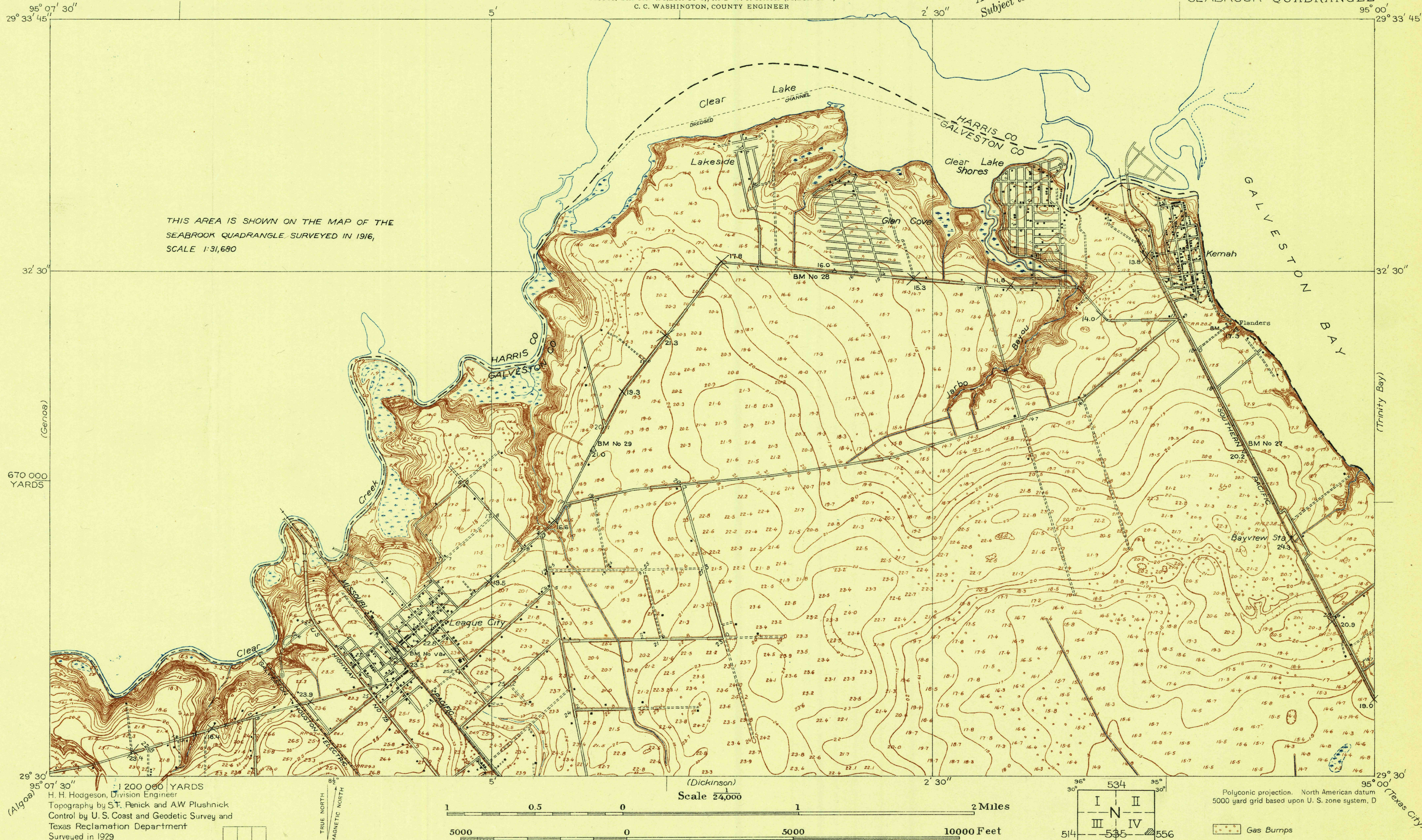
DEPARTMENT OF THE INTERIOR
U. S. GEOLOGICAL SURVEY

GALVESTON COUNTY, TEXAS
COUNTY COMMISSIONERS COURT
E. B. HOLMAN, COUNTY JUDGE
JAMES A. BODDEKER (PRECINCT 1), HUMPHREY D. BOYD (PRECINCT 2)
VICTOR DANTIN (PRECINCT 3), AND W. T. SMITH (PRECINCT 4)
C. C. WASHINGTON, COUNTY ENGINEER

TEXAS
(GALVESTON COUNTY)
SEABROOK QUADRANGLE

Advance sheet
Subject to correction

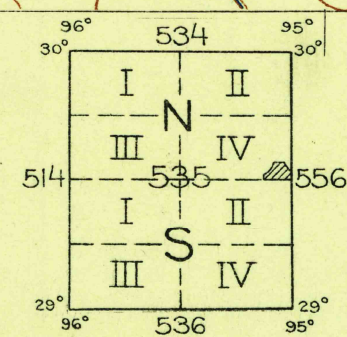
THIS AREA IS SHOWN ON THE MAP OF THE
SEABROOK QUADRANGLE, SURVEYED IN 1916,
SCALE 1:31,680



29° 30' 30" 95° 07' 30" 1 200 000 YARDS
H. H. Hodgeson, Division Engineer
Topography by S. T. Penick and A. W. Plushnick
Control by U. S. Coast and Geodetic Survey and
Texas Reclamation Department
Surveyed in 1929

TRUE NORTH
MAGNETIC NORTH
APPROXIMATE MEAN
DECLINATION, 1929

Scale 24,000
1 0.5 0 1 2 Miles
5000 0 5000 10000 Feet
Contour interval 1 foot
Datum is mean sea level



Polyconic projection. North American datum
5000 yard grid based upon U. S. zone system, D
Gas Bumps

SEABROOK, TEX.