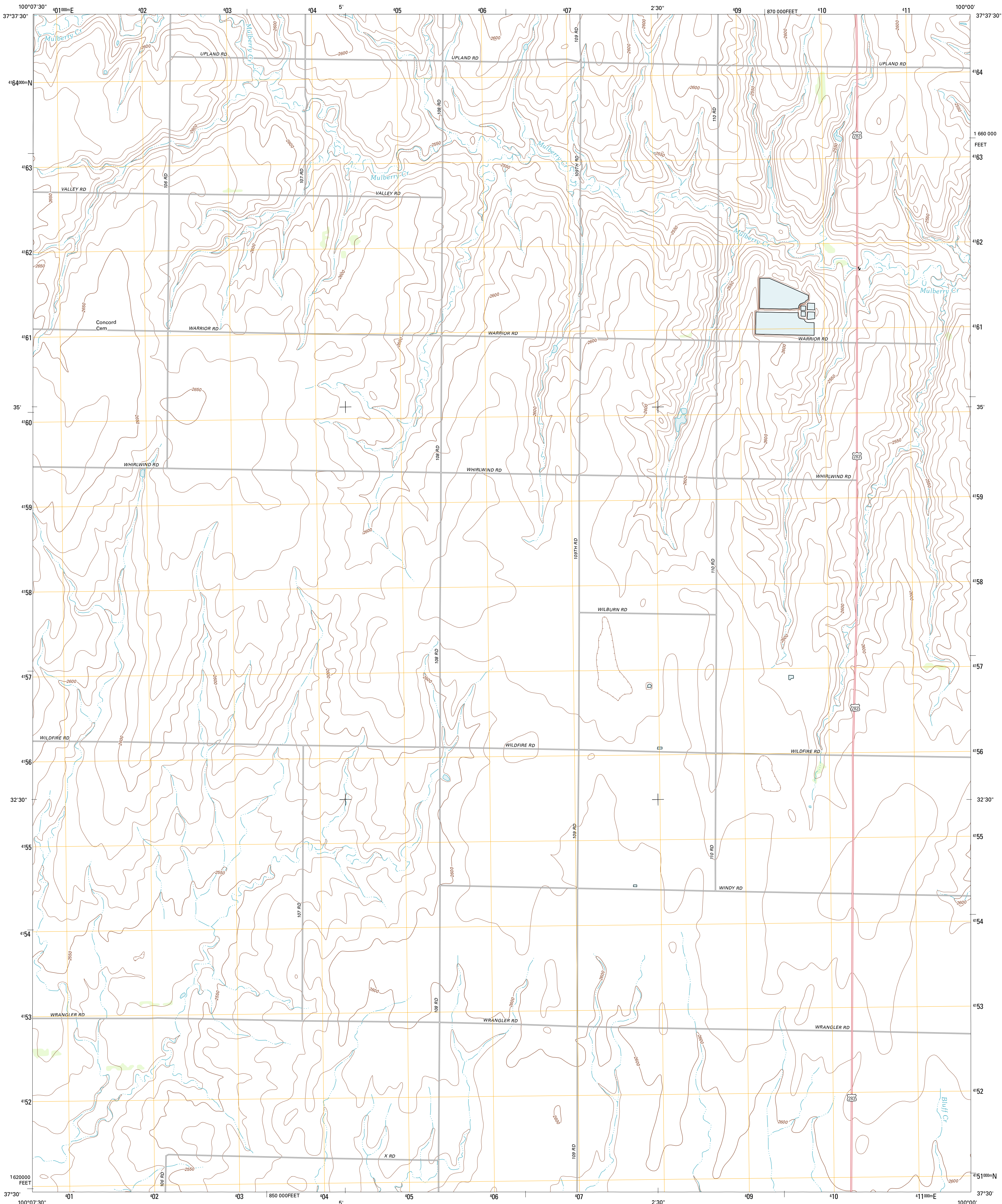




U.S. DEPARTMENT OF THE INTERIOR  
U. S. GEOLOGICAL SURVEY



ENSIGN SE QUADRANGLE  
KANSAS-FORD CO.  
7.5-MINUTE SERIES



Produced by the United States Geological Survey  
North American Datum of 1983 (NAD83)  
World Geodetic System of 1984 (WGS84). Projection and  
1 000-meter grid: Universal Transverse Mercator, Zone 14S  
10 000-foot ticks: Kansas Coordinate System of 1983 (south  
zone)

Imagery.....NAIP, June 2010  
Roads.....©2006-2011 TomTom  
Names.....GNIS, 2012  
Hydrography.....National Hydrography Dataset, 2010  
Contours.....National Elevation Dataset, 2012  
Boundaries.....Census, BWC, IBC, USGS, 1972-2012

UTM GRID AND 2012 MAGNETIC NORTH  
DECLINATION AT CENTER OF SHEET

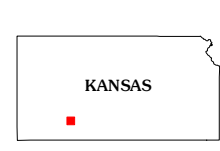
U.S. National Grid  
100,000-m Square ID  
MG  
Grid Zone Designation  
14S

SCALE 1:24 000

1 0.5 0 0.5 1 KILOMETERS  
1000 500 0 500 1000 METERS  
1 0 1000 2000 3000 4000 5000 6000 7000 8000 9000 10000  
1000 0 1000 2000 3000 4000 5000 6000 7000 8000 9000 10000 FEET

CONTOUR INTERVAL 10 FEET  
NORTH AMERICAN VERTICAL DATUM OF 1988

This map was produced to conform with the  
National Geospatial Program US Topo Product Standard, 2011.  
A metadata file associated with this product is draft version 0.6.4



Ensign	South Dodge	Fort Dodge
Ensign SW	Ensign SE	Fort Dodge SW
Fowler	Minneola	Bloom

ADJOINING 7.5' QUADRANGLES

ROAD CLASSIFICATION

Interstate Route	State Route
US Route	Local Road
Ramp	4WD

Interstate Route US Route State Route

ENSIGN SE, KS  
2012