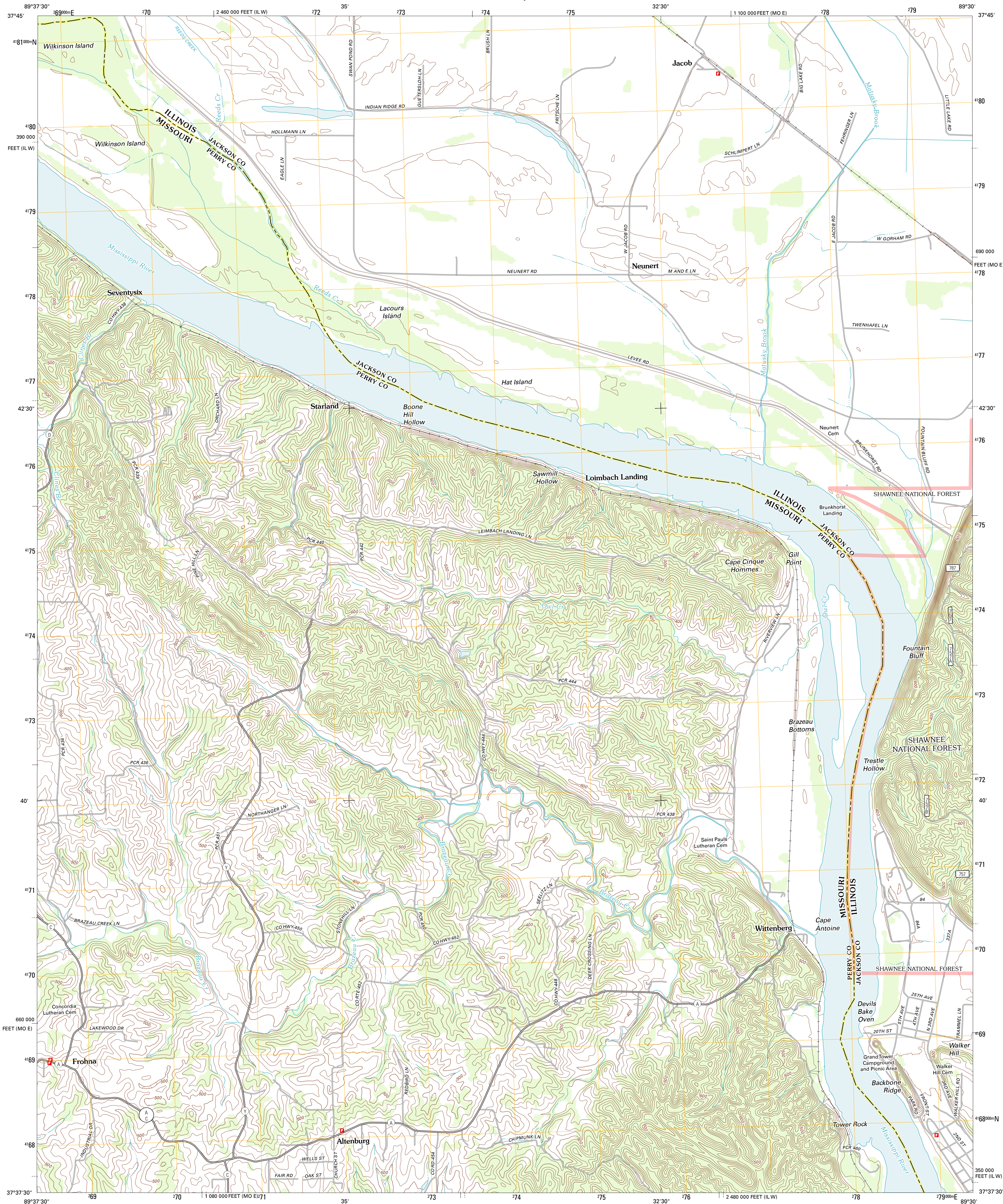




U.S. DEPARTMENT OF THE INTERIOR
U. S. GEOLOGICAL SURVEY



ALTENBURG QUADRANGLE
MISSOURI-ILLINOIS
7.5-MINUTE SERIES

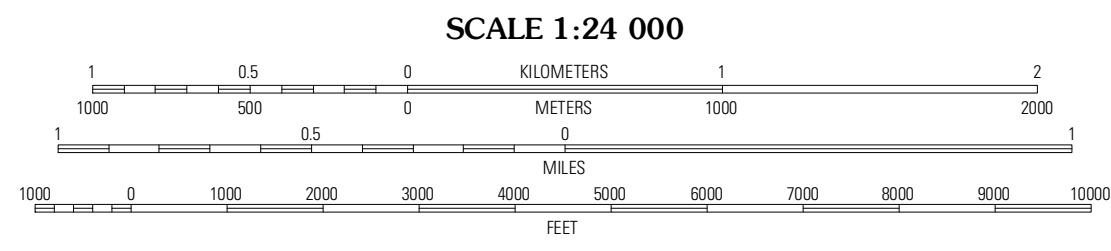


Produced by the United States Geological Survey
North American Datum of 1983 (NAD83)
World Geodetic System of 1984 (WGS84). Projection and
1 000-meter grid. Universal Transverse Mercator. Zone 16S
10 000-foot ticks: Missouri Coordinate System of 1983 (east
zone), Illinois Coordinate System of 1983 (west zone)

Imagery.....NAIP, June 2010 - August 2011
Roads.....©2006-2011 TomTom
Roads within US Forest Service Lands.....FS Topo Data
with limited Forest Service updates, 2009
Names.....GNIS, 2011
Hydrography.....National Hydrography Dataset, 2010
Contours.....National Elevation Dataset, 2008
Boundaries.....Census, IBWC, IBC, USGS, 1972 - 2010

UTM GRID AND 2012 MAGNETIC NORTH
DECLINATION AT CENTER OF SHEET

U.S. National Grid
100,000-m Square ID
86
Grid Zone Designation
16S



CONTOUR INTERVAL 20 FEET
NORTH AMERICAN VERTICAL DATUM OF 1988

This map was produced to conform with the
National Geospatial Program US Topo Product Standard, 2011.
A metadata file associated with this product is draft version 0.6.3



QUADRANGLE LOCATION		
Rockwood	Ruddle	Oraville
Croftown	Altenburg	Gorham
Oak Ridge	Neelys Landing	Wolf Lake

ROAD CLASSIFICATION

Interstate Route
US Route
Ramp
FS Primary Route

State Route
Local Road
4WD
FS Passenger Route
FS High Clearance Route

Check with local Forest Service unit
for current travel conditions and restrictions.

ALTENBURG, MO-IL
2012