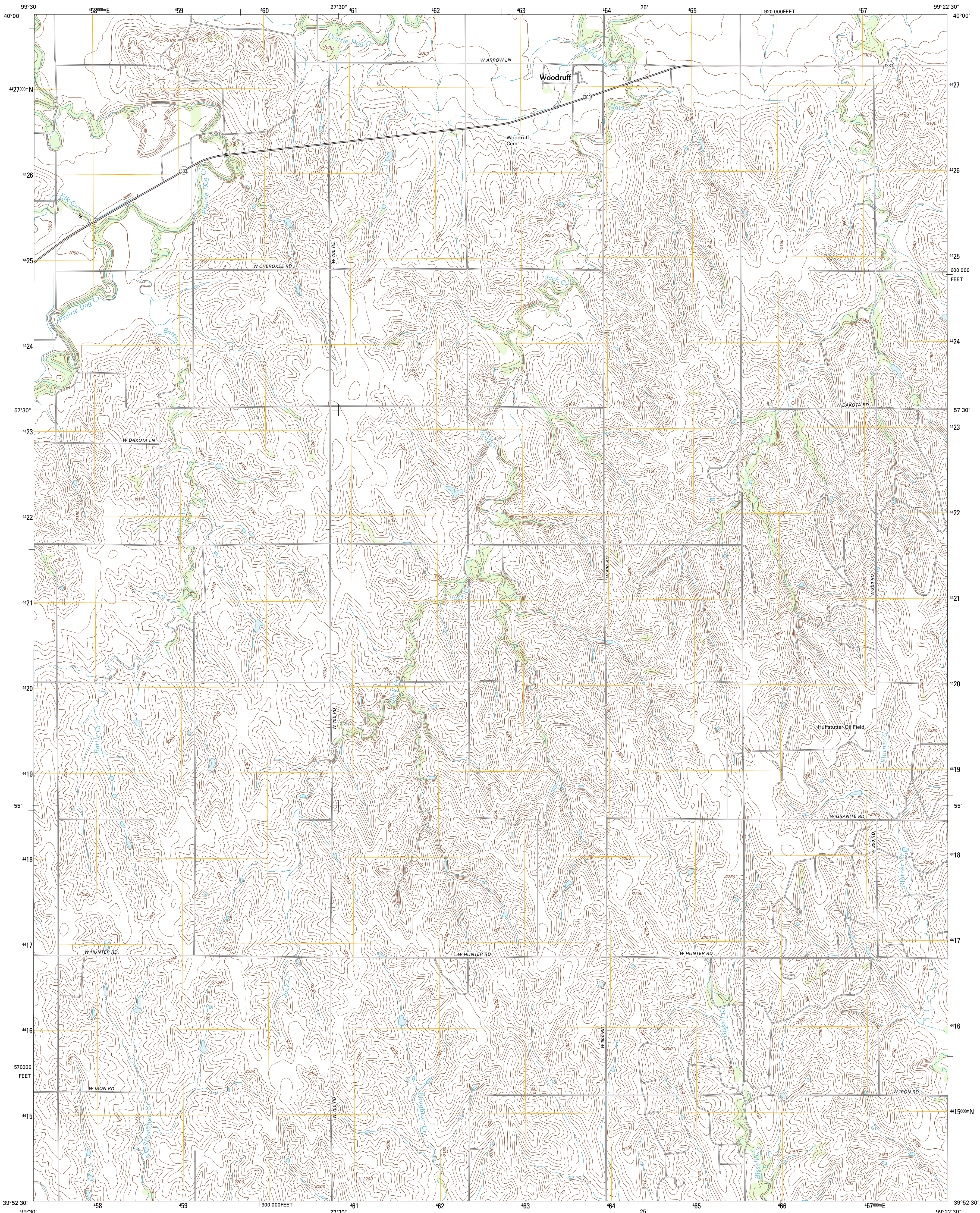




U.S. DEPARTMENT OF THE INTERIOR
U. S. GEOLOGICAL SURVEY



WOODRUFF QUADRANGLE
KANSAS-PHILLIPS CO.
7.5-MINUTE SERIES



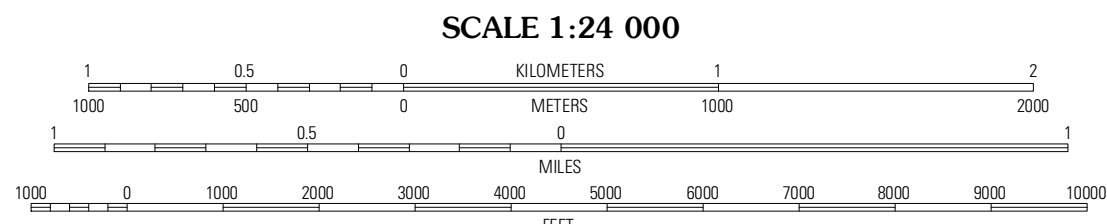
Produced by the United States Geological Survey
North American Datum of 1983 (NAD83)
World Geodetic System of 1984 (WGS84). Projection and
1 000-meter grid: Universal Transverse Mercator, Zone 14S
10 000-foot ticks: Kansas Coordinate System of 1983 (north
zone)

Imagery.....NAIP, July 2010
Roads.....©2006-2011 TomTom
Names.....GNIS, 2012
Hydrography.....National Hydrography Dataset, 2010
Contours.....National Elevation Dataset, 2012
Boundaries.....Census, BWC, IRC, USGS, 1972 - 2012

UTM GRID AND 2012 MAGNETIC NORTH
DECLINATION AT CENTER OF SHEET

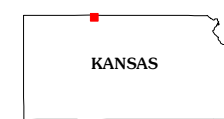
UTM GRID AND 2012 MAGNETIC NORTH
DECLINATION AT CENTER OF SHEET

U.S. National Grid
100,000 m Square ID
MK
Grid Zone Designation
14S



CONTOUR INTERVAL 10 FEET
NORTH AMERICAN VERTICAL DATUM OF 1988

This map was produced to conform with the
National Geospatial Program US Topo Product Standard, 2011.
A metadata file associated with this product is draft version 0.6.4



| QUADRANGLE LOCATION | | |
|---------------------|------------|-----------------------|
| Stamford SE | Alma SW | Alma |
| Long Island | Woodruff | Stuttgart NE |
| Prairie View | Stuttgart | Phillipsburg North |

ROAD CLASSIFICATION

Interstate Route
US Route
Ramp

State Route
Local Road
4WD

Interstate Route
US Route
State Route

WOODRUFF, KS
2012