

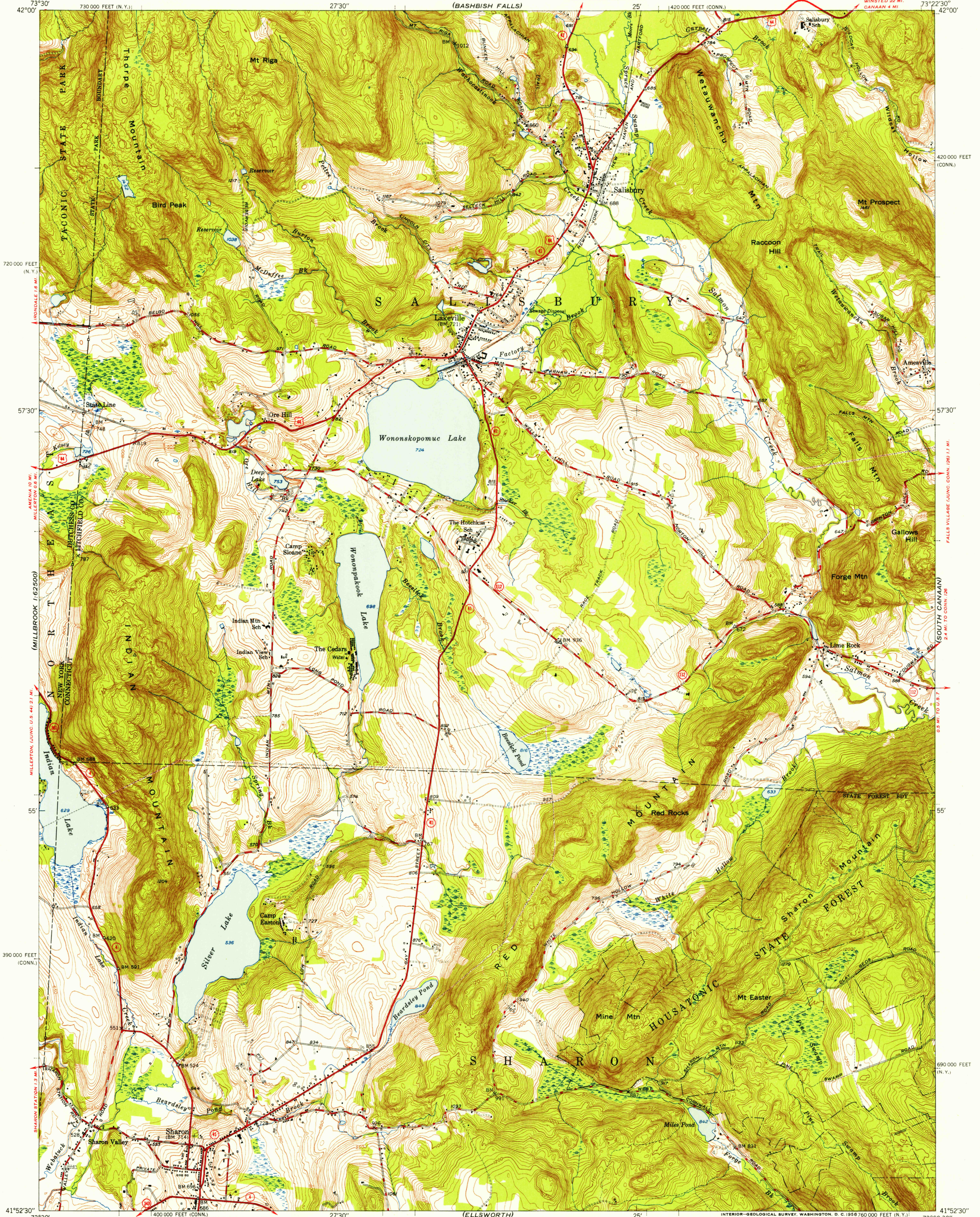
(COPAKE)
1:62,500

UNITED STATES
DEPARTMENT OF THE INTERIOR
GEOLOGICAL SURVEY

UNITED STATES
DEPARTMENT OF THE ARMY
CORPS OF ENGINEERS
(BASHBISH FALLS)

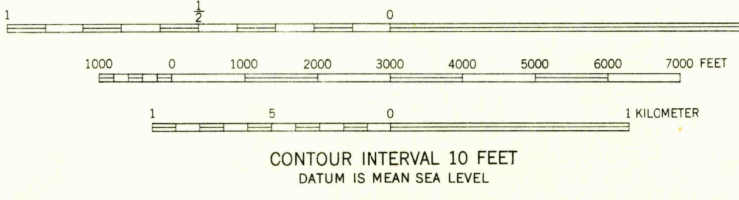
SHARON QUADRANGLE
CONNECTICUT-NEW YORK
7.5 MINUTE SERIES (TOPOGRAPHIC)
NW 1/4 CORNWALL 15' QUADRANGLE

(ASHLEY FALLS)



Maped, edited, and published by the Geological Survey
Control by USGS and USC&GS
Topography from aerial photographs by multiplex methods
Aerial photographs taken 1941 and 1944. Field check 1948
Polyconic projection. 1927 North American datum
10,000-foot grids based on Connecticut coordinate system,
and New York coordinate system, east zone

TRUE NORTH
MAGNETIC NORTH
APPROXIMATE MEAN
DECLINATION, 1948



ROAD CLASSIFICATION
HARD-SURFACE ALL WEATHER ROADS DRY WEATHER ROADS
Heavy-duty 4 LANE 16 LANE Improved dirt...
Medium-duty 4 LANE 16 LANE Unimproved dirt...
Loose-surface, graded, or narrow hard-surface...
U. S. Route State Route

SHARON, CONN.-N. Y.
NW 1/4 CORNWALL 15' QUADRANGLE
N4152.5-W7322.5/7.5
1948

THIS MAP COMPLIES WITH NATIONAL MAP ACCURACY STANDARDS
FOR SALE BY U. S. GEOLOGICAL SURVEY, WASHINGTON 25, D. C.
A FOLDER DESCRIBING TOPOGRAPHIC MAPS AND SYMBOLS IS AVAILABLE ON REQUEST