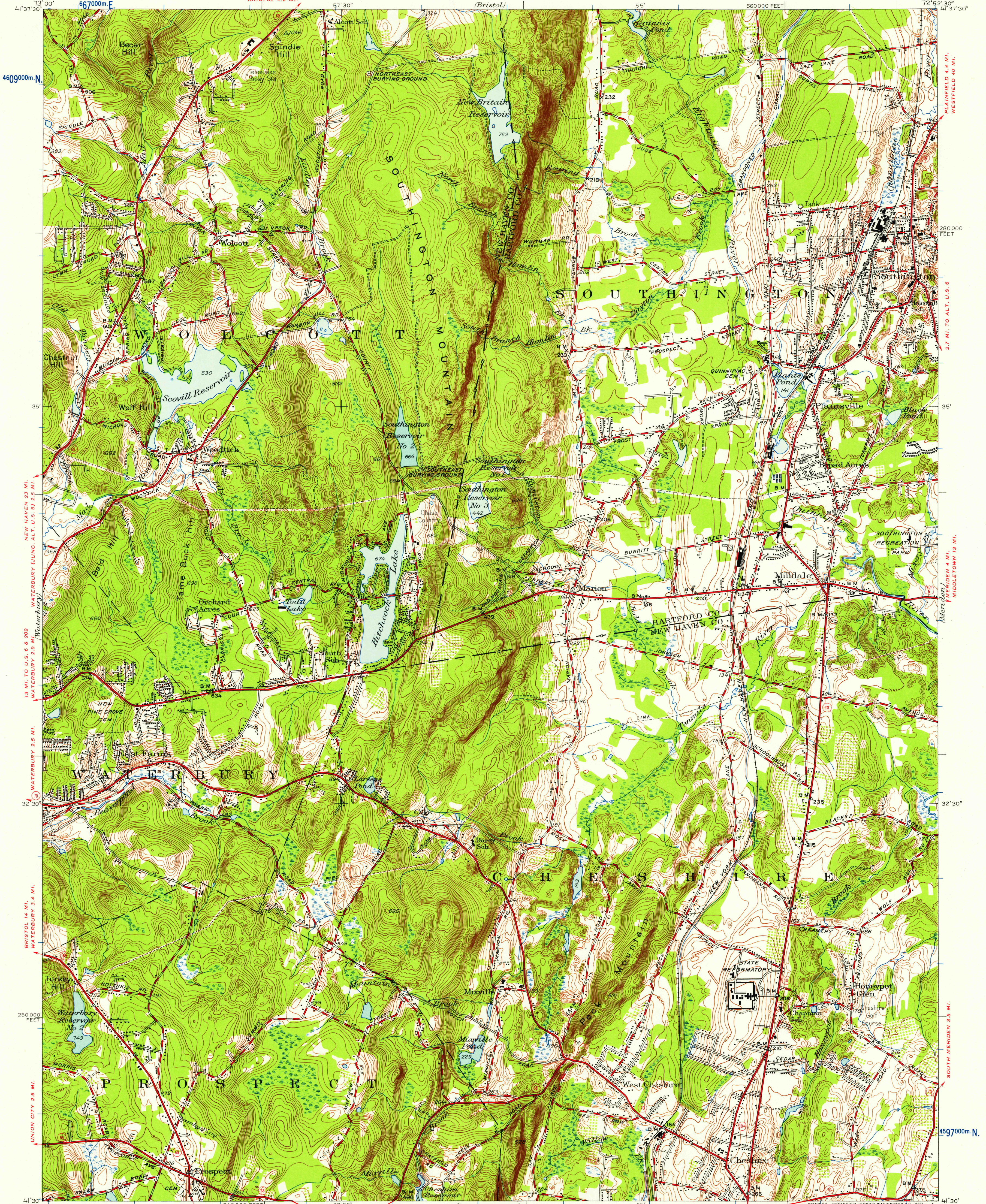
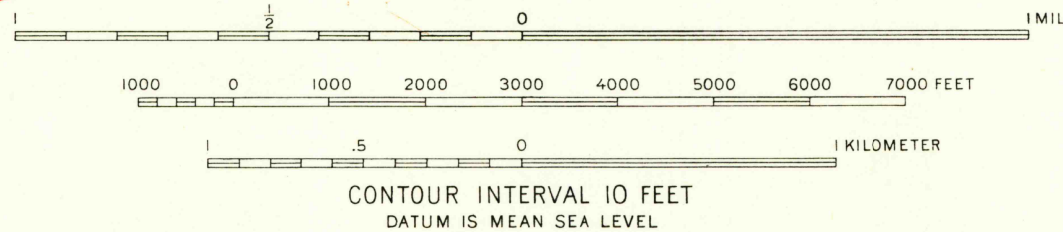


UNITED STATES  
DEPARTMENT OF THE INTERIOR  
GEOLOGICAL SURVEY

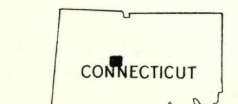
SOUTHINGTON QUADRANGLE  
CONNECTICUT  
7.5-MINUTE SERIES (TOPOGRAPHIC)



Mapped, edited, and published by the Geological Survey  
Control by USGS, USCGS, and Connecticut Geodetic Survey  
Topography by plane-table surveys 1943-1944, Revised 1955  
Polyconic projection, 1927 North American datum  
10,000-foot grid based on Connecticut coordinate system  
1000 meter Universal Transverse Mercator Grid ticks,  
zone 18, shown in blue



ROAD CLASSIFICATION  
Heavy-duty ——— Light-duty ———  
Medium-duty ——— Unimproved dirt ———  
U.S. Route ——— State Route ———



U.S.G.S. SOUTHINGTON, CONN.  
N4130-W7252.5/15  
1955  
FILE COPY  
TOPOGRAPHIC DIVISION

THIS MAP COMPLIES WITH NATIONAL MAP ACCURACY STANDARDS  
FOR SALE BY U.S. GEOLOGICAL SURVEY, WASHINGTON 25, D.C.  
A FOLDER DESCRIBING TOPOGRAPHIC MAPS AND SYMBOLS IS AVAILABLE ON REQUEST

OCT 15 1958