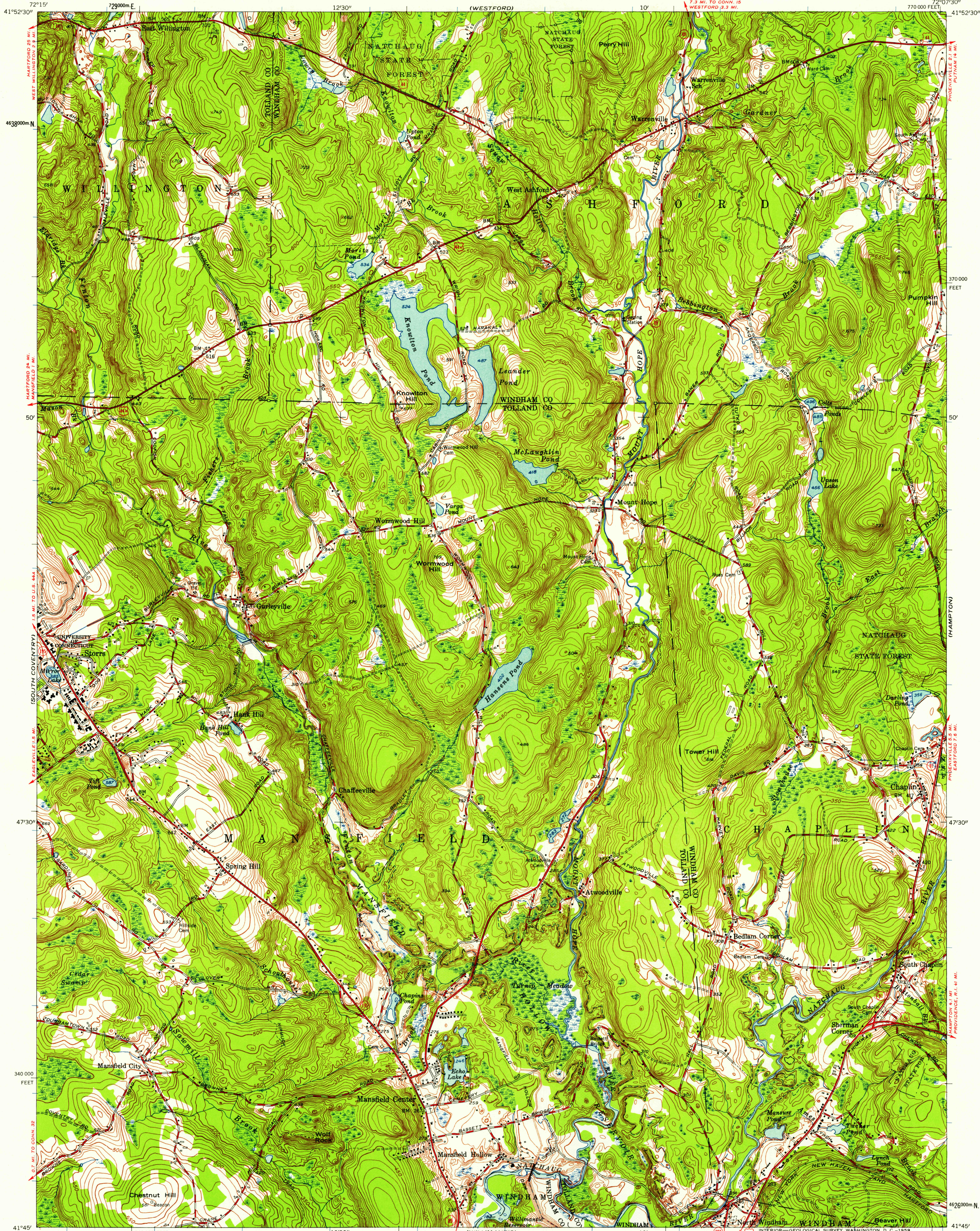


(STAFFORD  
SPRING)

UNITED STATES  
DEPARTMENT OF THE INTERIOR  
GEOLOGICAL SURVEY

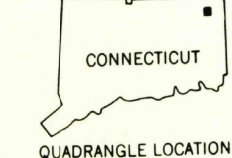
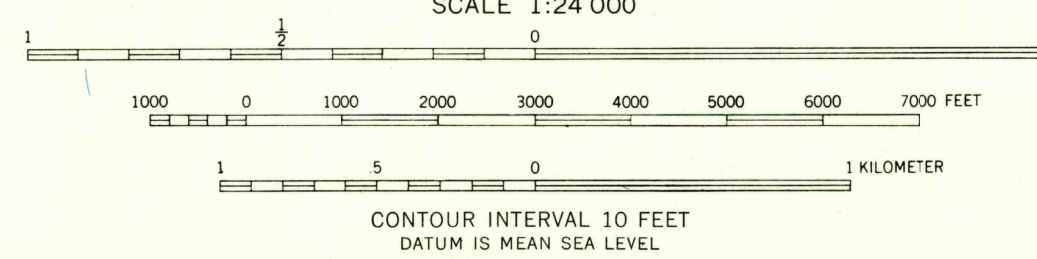
SPRING HILL QUADRANGLE  
CONNECTICUT  
7.5 MINUTE SERIES (TOPOGRAPHIC)

(EASTFORD)



Mapped, edited, and published by the Geological Survey  
Control by USGS and Connecticut Geodetic Survey  
Topography by plane-table surveys 1943. Revised 1953  
Polyconic projection. 1927 North American datum  
10,000-foot grid based on Connecticut coordinate system  
Broken blue lines indicate areas subject to inundation  
1000-meter Universal Transverse Mercator grid ticks,  
zone 18, shown in blue

13°  
TRUE NORTH  
MAGNETIC NORTH  
APPROXIMATE MEAN  
DECLINATION, 1954



ROAD CLASSIFICATION  
Heavy-duty ——— Light-duty ———  
Medium-duty ——— Unimproved dirt ———  
U. S. Route ——— State Route ———  
USGS  
Historical File  
Topographic Division  
FILE COPY  
TOPOGRAPHIC DIVISION  
SPRING HILL, CONN.  
N 4145 — W 7207.5/7.5  
1953

THIS MAP COMPLIES WITH NATIONAL MAP ACCURACY STANDARDS  
FOR SALE BY U. S. GEOLOGICAL SURVEY, WASHINGTON 25, D. C.  
A FOLDER DESCRIBING TOPOGRAPHIC MAPS AND SYMBOLS IS AVAILABLE ON REQUEST