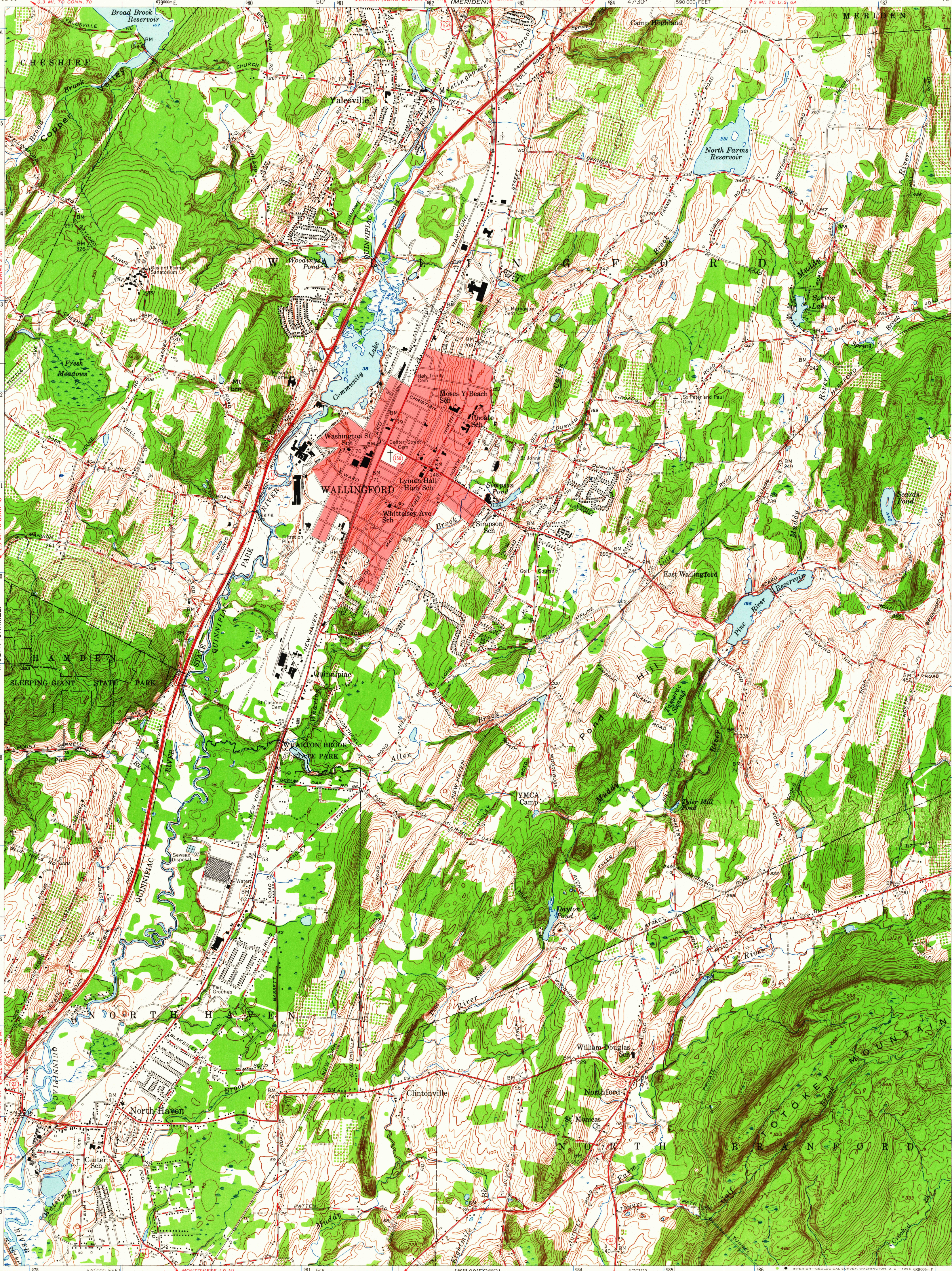


UNITED STATES  
DEPARTMENT OF THE INTERIOR  
GEOLOGICAL SURVEY

STATE OF CONNECTICUT  
HIGHWAY DEPARTMENT

WALLINGFORD QUADRANGLE  
CONNECTICUT—NEW HAVEN CO.  
7.5 MINUTE SERIES (TOPOGRAPHIC)



Mapped, edited, and published by the Geological Survey

Control by USGS, USC&GS, and Connecticut Geodetic Survey

Topography from aerial photographs by multiplex methods

Aerial photographs taken 1949. Field check 1954

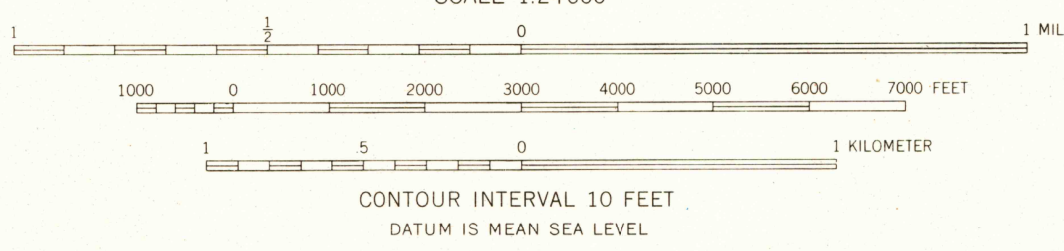
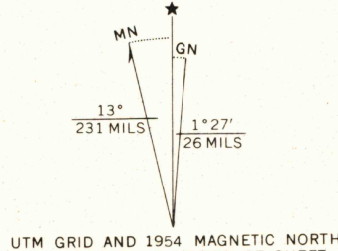
Polyconic projection. 1927 North American datum

10,000-foot grid based on Connecticut coordinate system

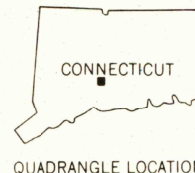
Red tint indicates areas in which only landmark buildings are shown

Unchecked elevations are shown in brown

1000-meter Universal Transverse Mercator grid ticks, zone 18, shown in blue



ROAD CLASSIFICATION			
Heavy-duty	Light-duty	Medium-duty	Unimproved dirt
U. S. Route	State Route		



WALLINGFORD, CONN.

N4122.5-W7245/7.5

1954

AMS 6466 IV NE—SERIES V816

THIS MAP COMPLIES WITH NATIONAL MAP ACCURACY STANDARDS  
FOR SALE BY U. S. GEOLOGICAL SURVEY, WASHINGTON 25, D. C.  
A FOLDER DESCRIBING TOPOGRAPHIC MAPS AND SYMBOLS IS AVAILABLE ON REQUEST

FILE COPY  
TOPOGRAPHIC DIVISION

APR 51965

5095