

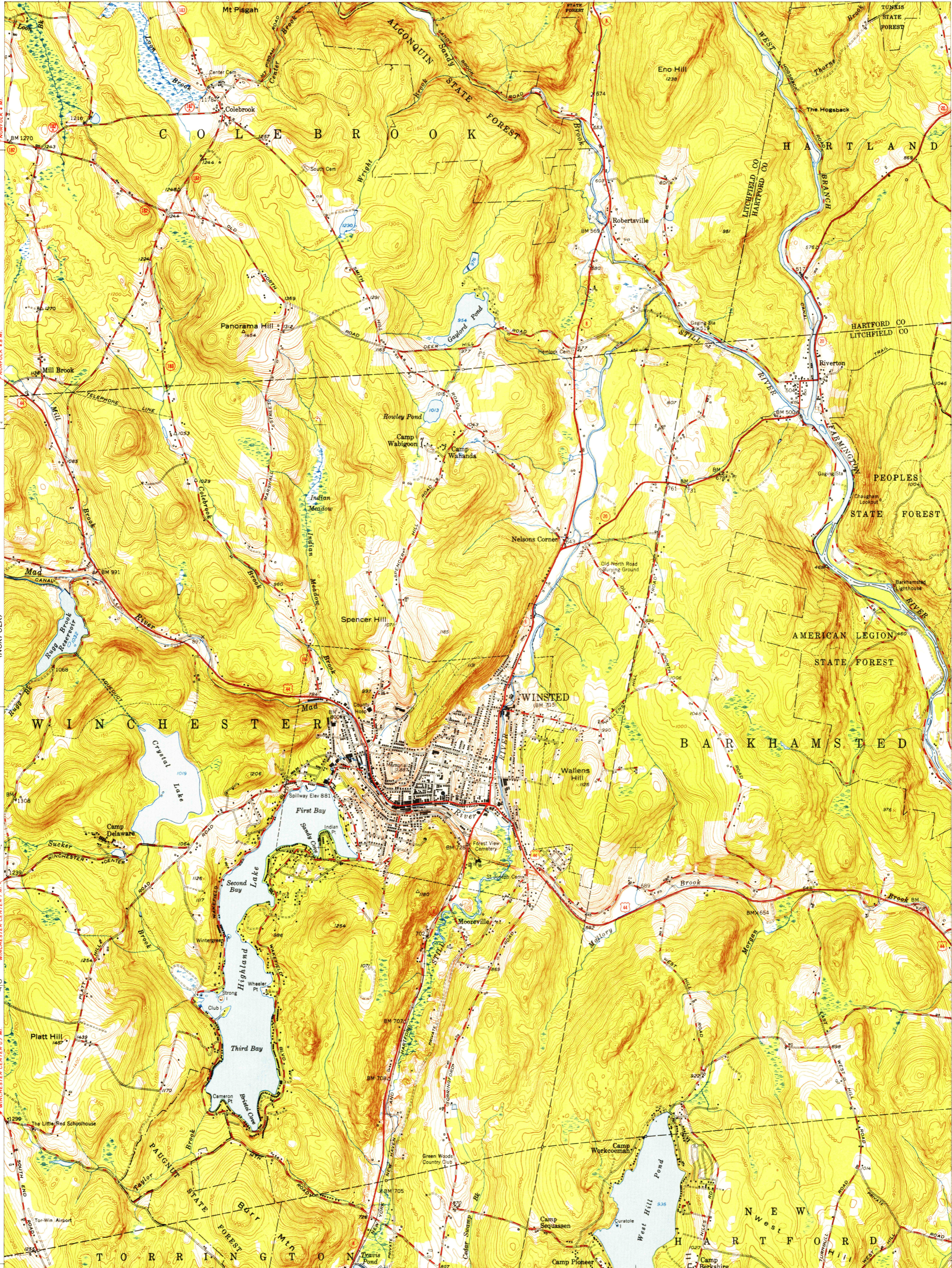
UNITED STATES
DEPARTMENT OF THE INTERIOR
GEOLOGICAL SURVEY

UNITED STATES
DEPARTMENT OF THE ARMY
CORPS OF ENGINEERS
(TOLLAND)

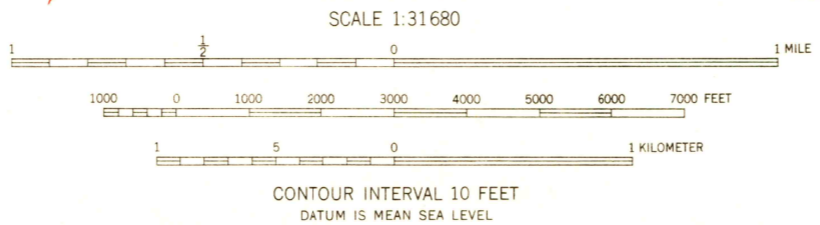
WINSTED QUADRANGLE
CONNECTICUT
7.5 MINUTE SERIES (TOPOGRAPHIC)
NE/4 WINSTED 15 QUADRANGLE
WEST HARTLAND 3.9 MI.
530 000 FEET

U.S.G.S.
FILE COPY
TOPOGRAPHIC DIVISION

USGS
Historical File
Topographic Division



Maped, edited, and published by the Geological Survey
Control by USGS, USC&GS, and Connecticut Geodetic Survey
Topography from aerial photographs by multiplex methods
Aerial photographs taken 1944. Field check 1948
Polyconic projection. 1927 North American datum
10,000-foot grid based on Connecticut coordinate system



ROAD CLASSIFICATION
HARD-SURFACE ALL WEATHER ROADS
Heavy-duty ———— 2 LANE 16 LANE
Medium-duty ———— 2 LANE 16 LANE
Loose-surface, graded, or narrow hard-surface ————
U. S. Route ———— State Route ————
DRY WEATHER ROADS
Improved dirt ————
Unimproved dirt ————

U.S.G.S.
FILE COPY
TOPOGRAPHIC DIVISION

WINSTED, CONN.
NE/4 WINSTED 15 QUADRANGLE
N4152.5-W7300/7.5
1948

THIS MAP COMPLIES WITH NATIONAL MAP ACCURACY STANDARDS
FOR SALE BY U. S. GEOLOGICAL SURVEY, WASHINGTON 25, D. C.
A FOLDER DESCRIBING TOPOGRAPHIC MAPS AND SYMBOLS IS AVAILABLE ON REQUEST