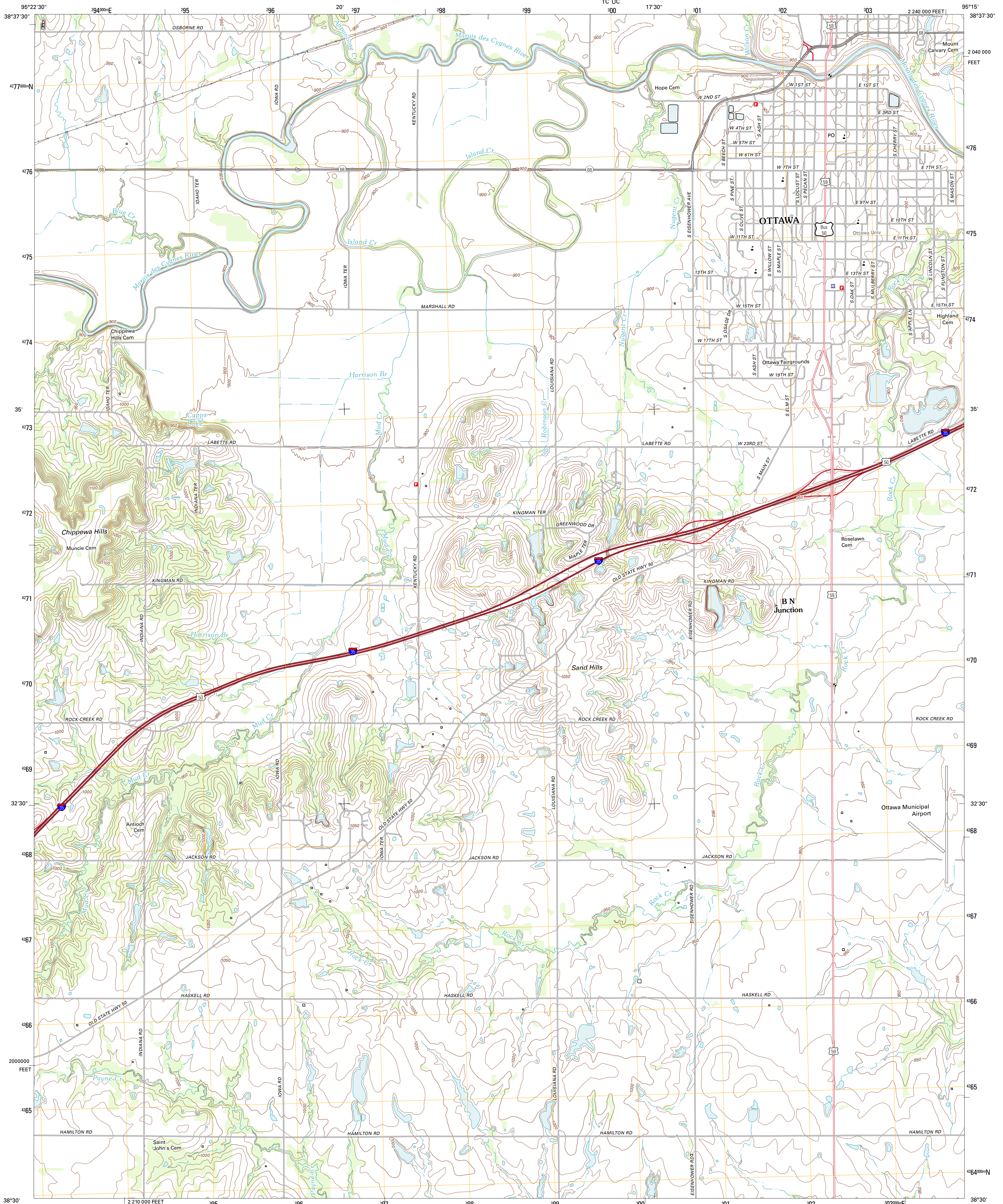




U.S. DEPARTMENT OF THE INTERIOR  
U. S. GEOLOGICAL SURVEY

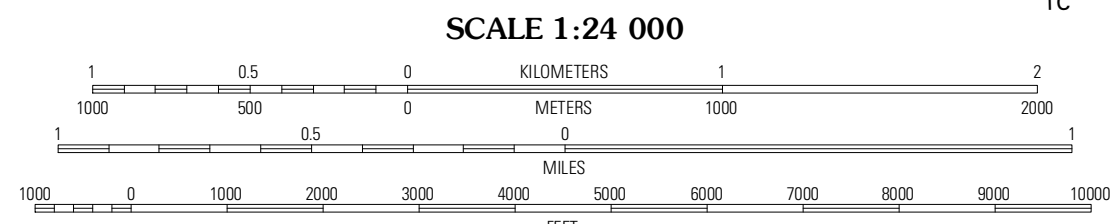
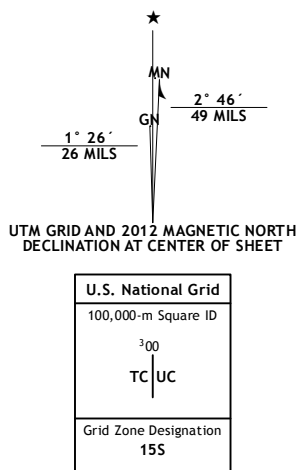


OTTAWA SOUTH QUADRANGLE  
KANSAS-FRANKLIN CO.  
7.5-MINUTE SERIES

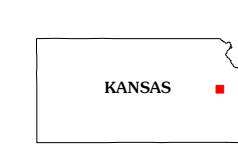


Produced by the United States Geological Survey  
North American Datum of 1983 (NAD83)  
World Geodetic System of 1984 (WGS84). Projection and  
1 000-meter grid: Universal Transverse Mercator, Zone 15S  
10 000-foot ticks: Kansas Coordinate System of 1983 (south  
zone)

Imagery.....NAIP, July 2010  
Roads.....©2006-2011 TomTom  
Names.....GNIS, 2012  
Hydrography.....National Hydrography Dataset, 2010  
Contours.....National Elevation Dataset, 2011  
Boundaries.....Census, BWC, IBC, USGS, 1972 - 2012



CONTOUR INTERVAL 10 FEET  
NORTH AMERICAN VERTICAL DATUM OF 1988  
This map was produced to conform with the  
National Geospatial Program US Topo Product Standard, 2011.  
A metadata file associated with this product is draft version 0.6.4



Ottawa NW	Ottawa North	Le Loup
Pomona	Ottawa South	Pooris
Williamsburg	Richmond	Garnett NW

ADJOINING 7.5 QUADRANGLES

ROAD CLASSIFICATION			
Interstate Route	State Route	US Route	Local Road
Ramp	4WD		

OTTAWA SOUTH, KS  
2012