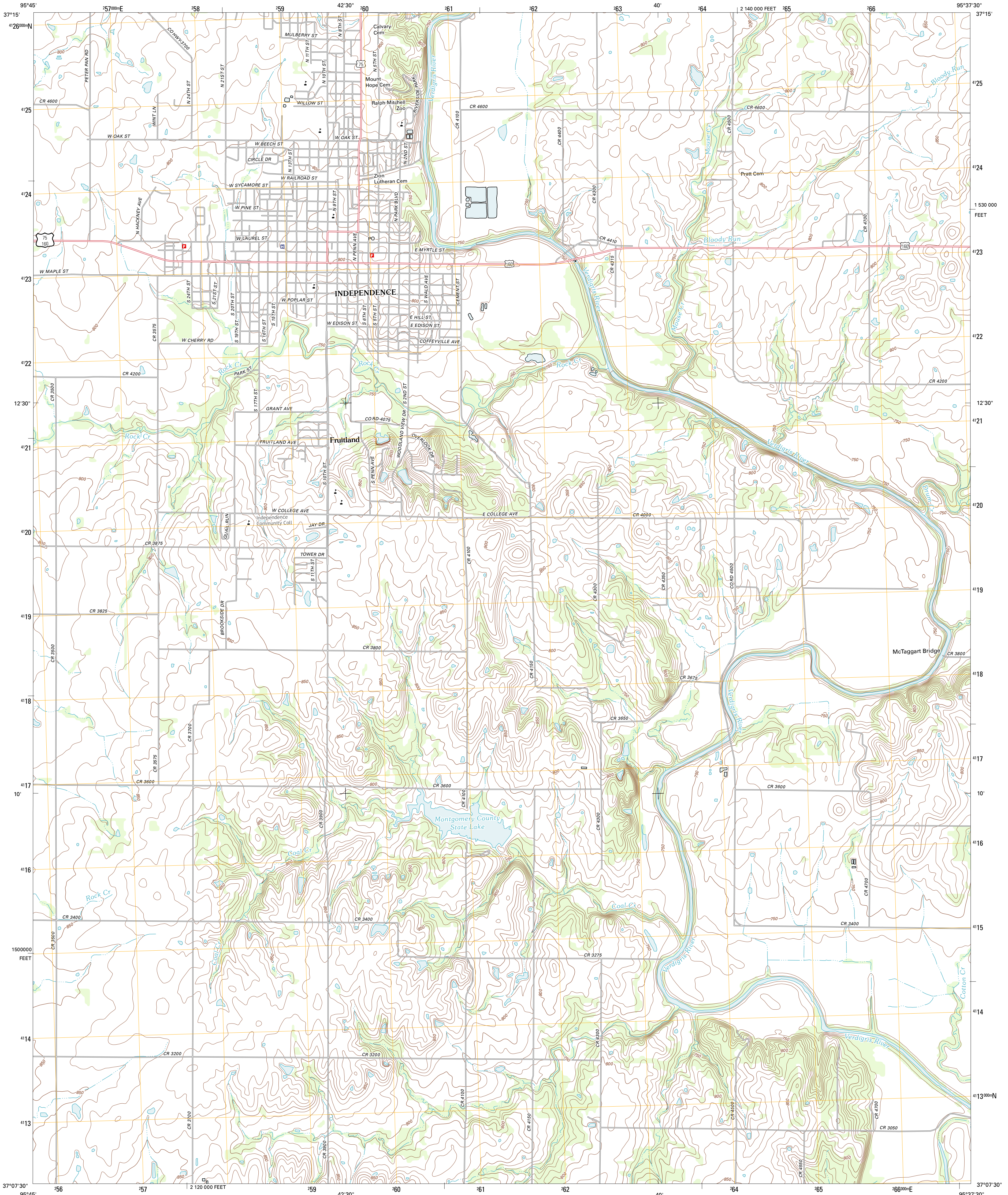




U.S. DEPARTMENT OF THE INTERIOR
U. S. GEOLOGICAL SURVEY



INDEPENDENCE QUADRANGLE
KANSAS-MONTGOMERY CO.
7.5-MINUTE SERIES

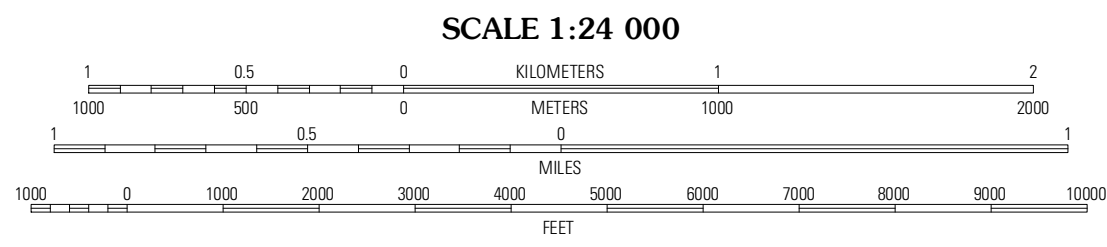


Produced by the United States Geological Survey
North American Datum of 1983 (NAD83)
World Geodetic System of 1984 (WGS84). Projection and
1 000-meter grid: Universal Transverse Mercator, Zone 15S
10 000-foot ticks: Kansas Coordinate System of 1983 (south
zone)

Imagery.....©2006-2011 TomTom
Roads.....©2006-2011 TomTom
Names.....GNIS, 2012
Hydrography.....National Hydrography Dataset, 2010
Contours.....National Elevation Dataset, 2006
Boundaries.....Census, BWC, IBC, USGS, 1972 - 2012

UTM GRID AND 2012 MAGNETIC NORTH
DECLINATION AT CENTER OF SHEET

U.S. National Grid 100,000-m Square ID TB
Grid Zone Designation 15S



CONTOUR INTERVAL 10 FEET
NORTH AMERICAN VERTICAL DATUM OF 1988
This map was produced to conform with the
National Geospatial Program US Topo Product Standard, 2011.
A metadata file associated with this product is draft version 0.6.4

KANSAS		
Table Mound	Sycamore	Cherryvale
Bolton	Independence	Liberty
Tyro	Coffeyville West	Coffeyville East

ROAD CLASSIFICATION
Interstate Route
US Route
Ramp
State Route
Local Road
4WD

INDEPENDENCE, KS
2012