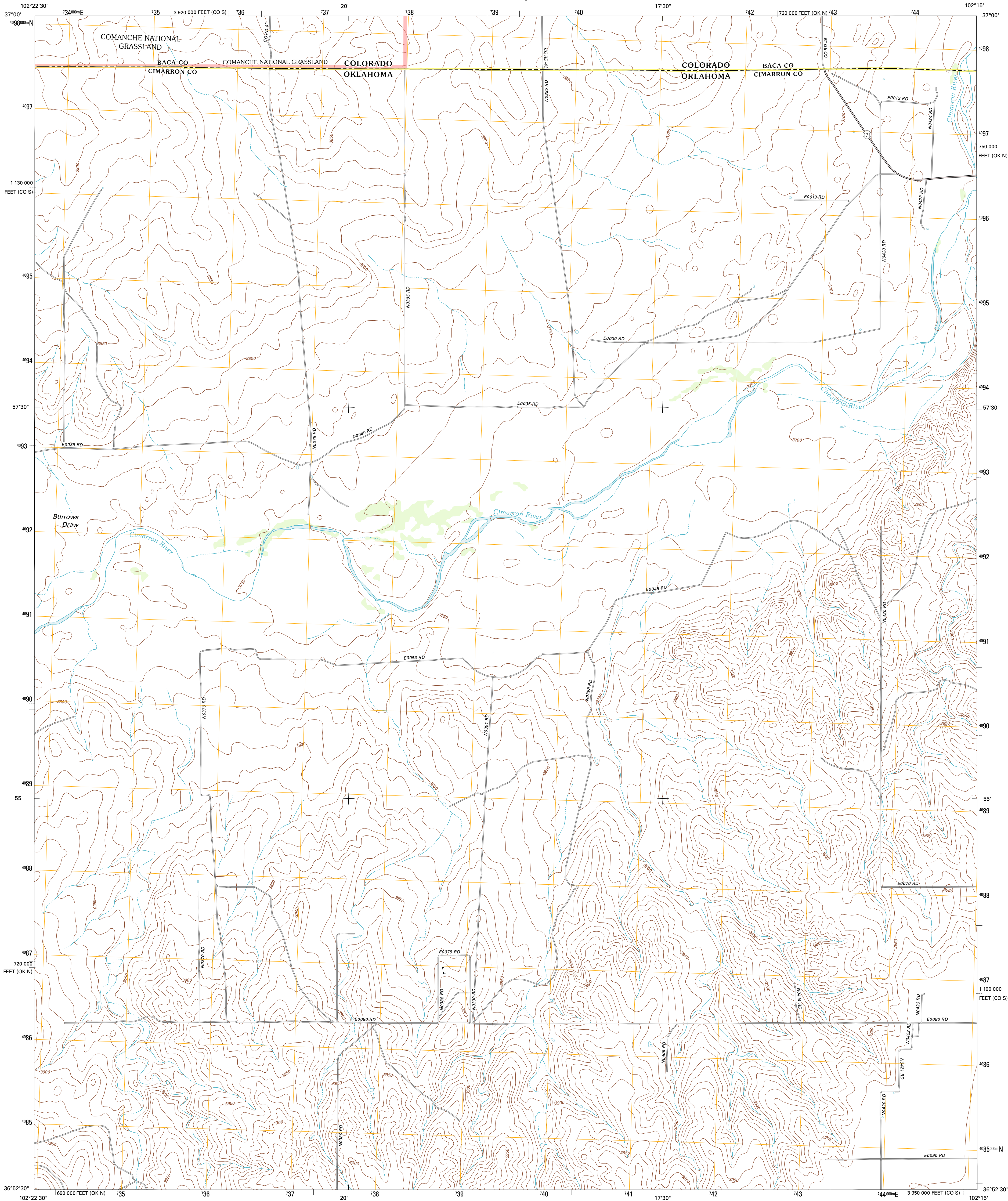




U.S. DEPARTMENT OF THE INTERIOR
U. S. GEOLOGICAL SURVEY



KEYES NE QUADRANGLE
OKLAHOMA-COLORADO
7.5-MINUTE SERIES

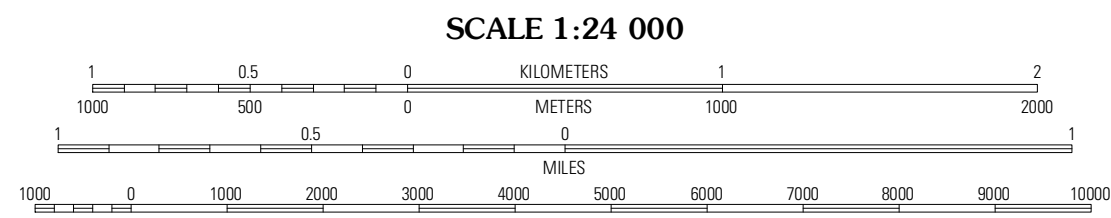


Produced by the United States Geological Survey
North American Datum of 1983 (NAD83)
World Geodetic System of 1984 (WGS84) Projection and
1 000-meter grid: Universal Transverse Mercator, Zone 13S
10 000-foot ticks: Oklahoma Coordinate System of 1983
(north zone), Colorado Coordinate System of 1983 (south zone)

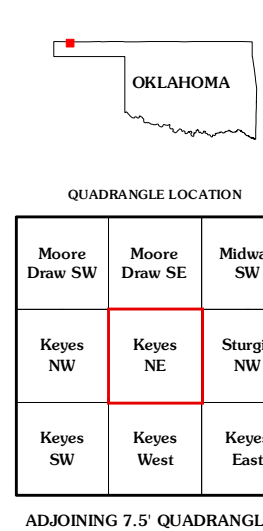
Imagery.....NAIP, May 2010 - July 2011
Roads.....©2006-2011 TomTom
Roads within US Forest Service Lands.....FS Topo Data
with limited Forest Service updates, 2012
Names.....GNIS, 2012
Hydrography.....National Hydrography Dataset, 2010
Contours.....National Elevation Dataset, 2006
Boundaries.....Census, IBWC, IBC, USGS, 1972 - 2012
Public Land Survey System.....BLM, 2006 - 2008

UTM GRID AND 2012 MAGNETIC NORTH
DECLINATION AT CENTER OF SHEET

U.S. National Grid
100,000-m Square ID
GA
Grid Zone Designation
13S



CONTOUR INTERVAL 10 FEET
NORTH AMERICAN VERTICAL DATUM OF 1988
This map was produced to conform with the
National Geospatial Program US Topo Product Standard, 2011.
A metadata file associated with this product is draft version 0.6.6



ROAD CLASSIFICATION
Interstate Route
US Route
Ramp
State Route
Local Road
4WD
FS Primary Route
US Passenger Route
FS High Clearance Route
State Route
FS High Clearance Route

Check with local Forest Service unit
for current travel conditions and restrictions.

KEYES NE, OK-CO
2012