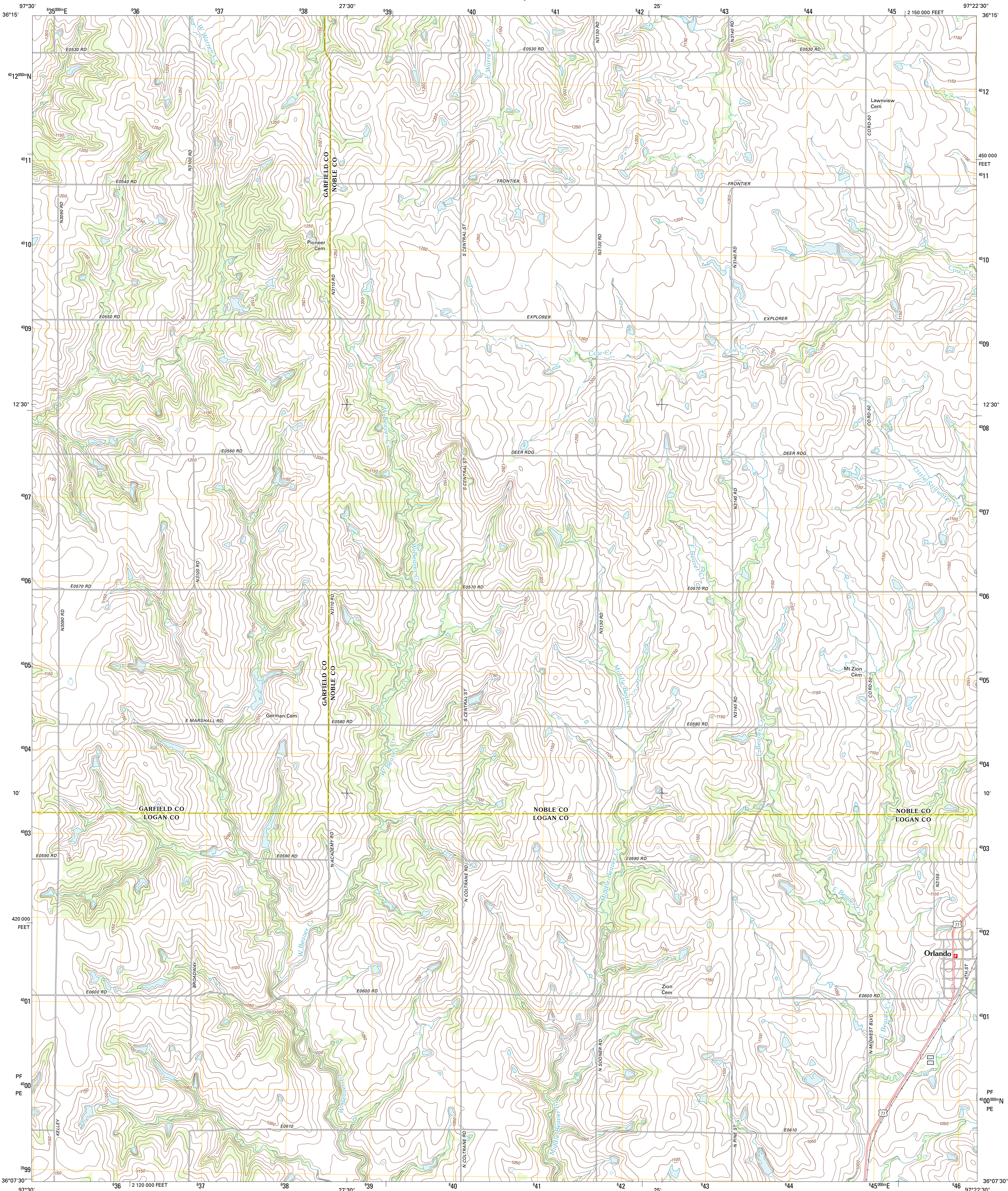




U.S. DEPARTMENT OF THE INTERIOR
U. S. GEOLOGICAL SURVEY



ORLANDO WEST QUADRANGLE
OKLAHOMA
7.5-MINUTE SERIES

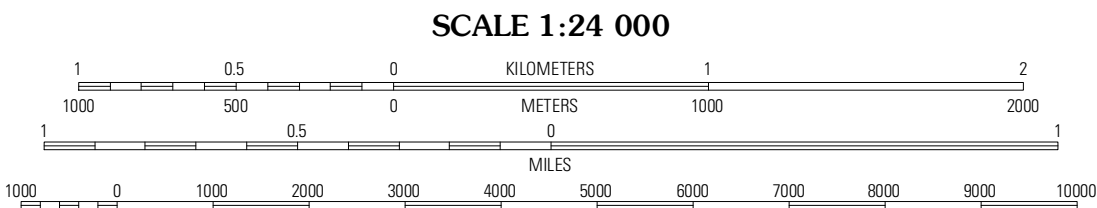


Produced by the United States Geological Survey
North American Datum of 1983 (NAD83)
World Geodetic System of 1984 (WGS84). Projection and
1 000-meter grid: Universal Transverse Mercator, Zone 14S
10 000-foot ticks: Oklahoma Coordinate System of 1983
(north zone)

Imagery:.....NAIP, May 2010
Roads:.....©2006-2011 TomTom
Names:.....GNIS, 2012
Hydrography:.....National Hydrography Dataset, 2010
Contours:.....National Elevation Dataset, 2008
Boundaries:.....Census, BWC, IBC, USGS, 1972 - 2012

UTM GRID AND 2012 MAGNETIC NORTH
DECLINATION AT CENTER OF SHEET

| U.S. National Grid |
|-----------------------|
| 100,000-m Square ID |
| PF |
| PE |
| Grid Zone Designation |
| 14S |



CONTOUR INTERVAL 10 FEET
NORTH AMERICAN VERTICAL DATUM OF 1988

This map was produced to conform with the
National Geospatial Program US Topo Product Standard, 2011.
A metadata file associated with this product is draft version 0.6.6



| QUADRANGLE LOCATION | | |
|---------------------|--------------|--------------|
| Covington | Lucien | Perry |
| Marshall East | Orlando West | Orlando East |
| Bridge Creek | Mulhall | Clear Creek |

ROAD CLASSIFICATION

| | |
|------------------|-------------|
| Interstate Route | State Route |
| US Route | Local Road |
| Ramp | 4WD |

Interstate Route US Route State Route

ORLANDO WEST, OK
2012

ADJOINING 7.5' QUADRANGLES