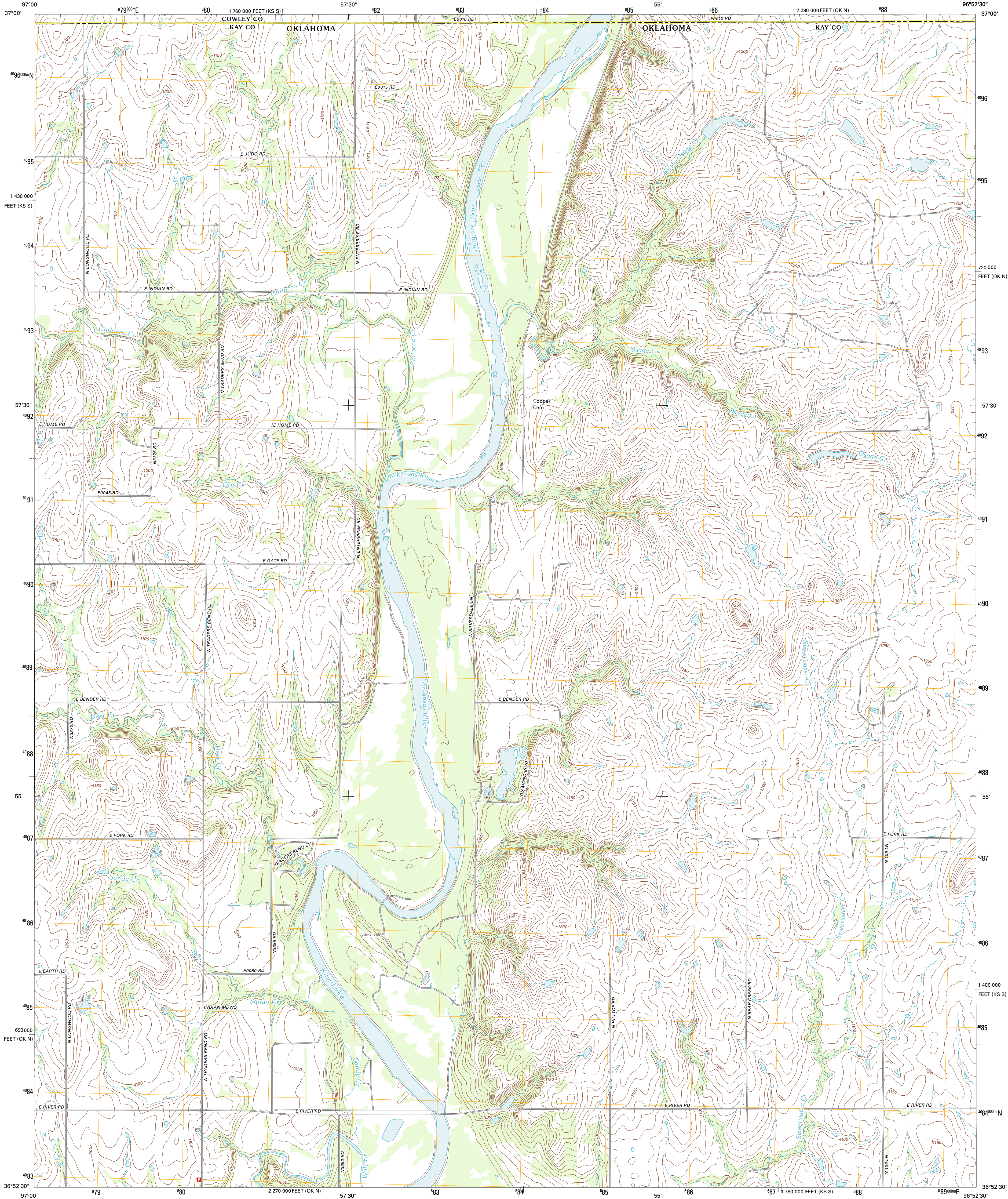




U.S. DEPARTMENT OF THE INTERIOR  
U. S. GEOLOGICAL SURVEY

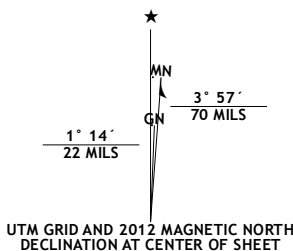


KAW CITY NW QUADRANGLE  
OKLAHOMA-KANSAS  
7.5-MINUTE SERIES

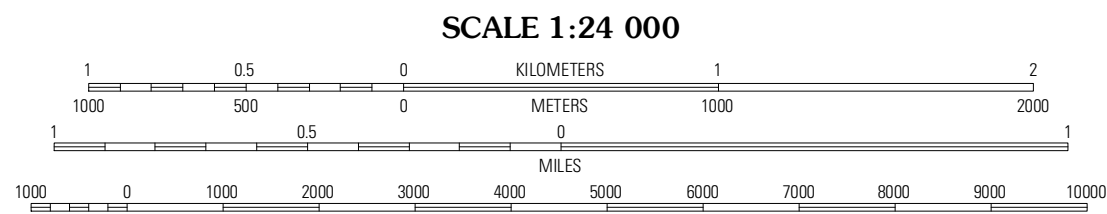


Produced by the United States Geological Survey  
North American Datum of 1983 (NAD83)  
World Geodetic System of 1984 (WGS84). Projection and  
1 000-meter grid: Universal Transverse Mercator, Zone 14S  
10 000-foot ticks: Oklahoma Coordinate System of 1983  
(north zone), Kansas Coordinate System of 1983 (south zone)

Imagery.....NAIP, May 2010 - June 2012  
Roads.....©2006-2011 TomTom  
Names.....GNIS, 2012  
Hydrography.....National Hydrography Dataset, 2010  
Contours.....National Elevation Dataset, 2008  
Boundaries.....Census, IBWC, IBC, USGS, 1972 - 2012



U.S. National Grid
100,000-m Square ID
PF
Grid Zone Designation
14S



CONTOUR INTERVAL 10 FEET  
NORTH AMERICAN VERTICAL DATUM OF 1988  
This map was produced to conform with the  
National Geospatial Program US Topo Product Standard, 2011.  
A metadata file associated with this product is draft version 0.6.6



Arkansas City	Silverdale	Maple City
Newkirk	Kaw City NW	Hardy
Kildare	Uncas	Kaw City

ROAD CLASSIFICATION	
Interstate Route	State Route
US Route	Local Road
Ramp	4WD
Interstate Route	US Route
	State Route

KAW CITY NW, OK-KS  
2012