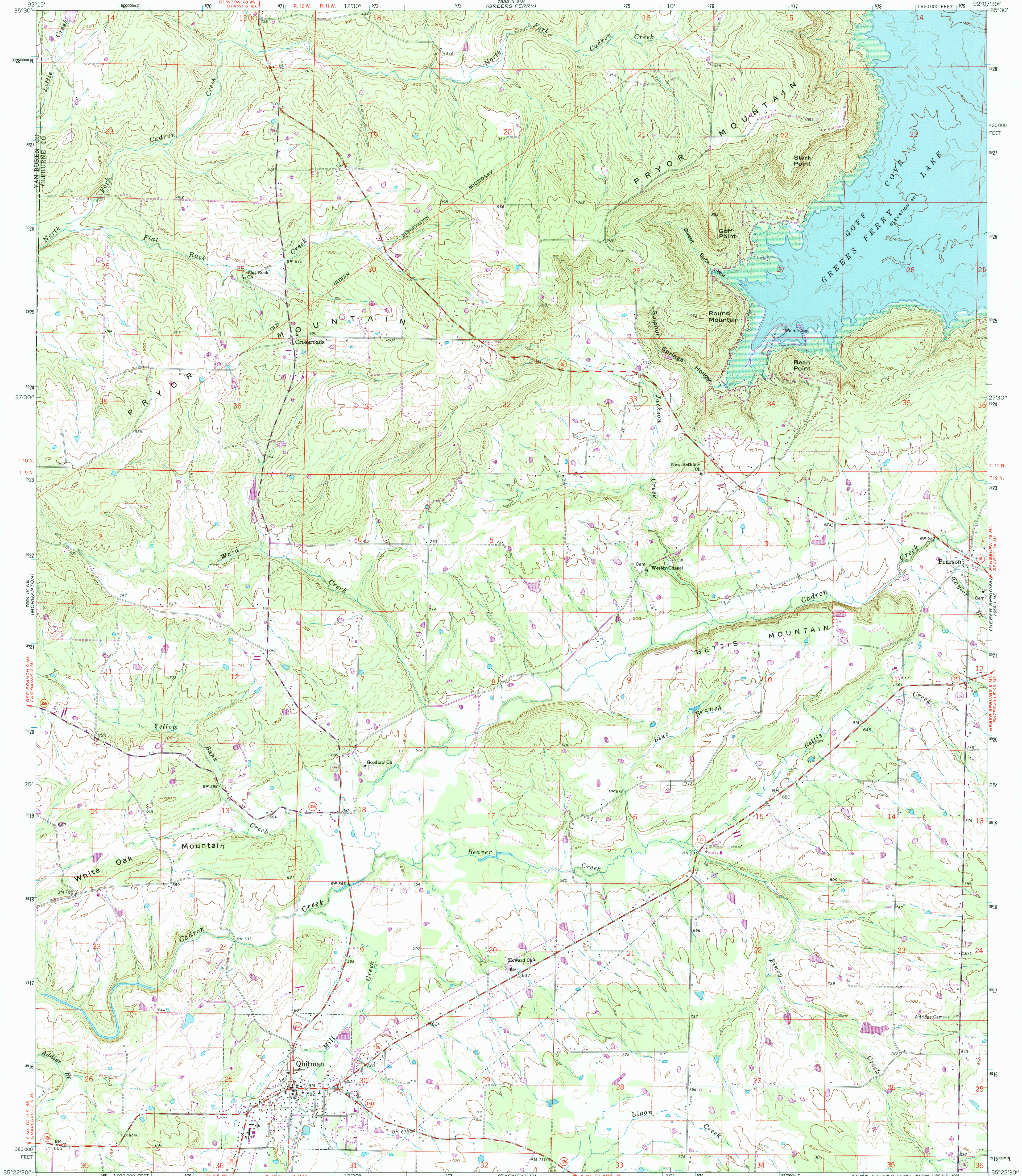
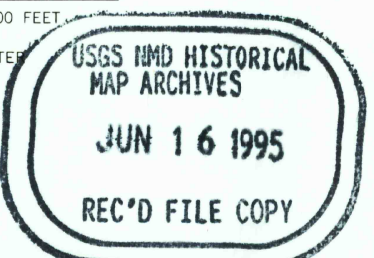
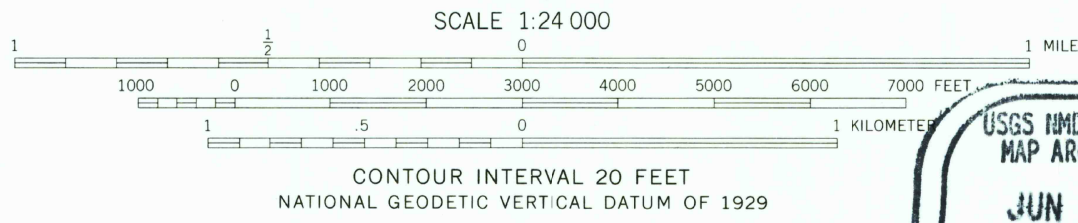
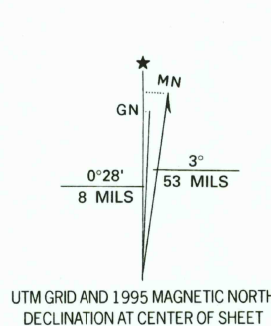


UNITED STATES
DEPARTMENT OF THE INTERIOR
GEOLOGICAL SURVEY

QUITMAN QUADRANGLE
ARKANSAS
7.5 MINUTE SERIES (TOPOGRAPHIC)



Produced by the United States Geological Survey
Compiled by photogrammetric methods from imagery dated 1960
Field checked 1963
North American Datum of 1927 (NAD 27). Projection and
10 000-foot ticks: Arkansas coordinate system, north zone
(Lambert conformal conic)
Blue 1000-meter Universal Transverse Mercator ticks, zone 15
North American Datum of 1983 (NAD 83) is shown by dashed
corner ticks. The values of the shift between NAD 27 and NAD 83
for 7.5-minute intersections are obtainable from National Geodetic
Survey NADCON software
Area covered by dashed light-blue pattern
are subject to controlled inundation



ROAD CLASSIFICATION	
Primary highway, hard surface	Light duty road, hard or improved surface
Secondary highway, hard surface	Unimproved road
Interstate Route	U. S. Route
	State Route

THIS MAP COMPLIES WITH NATIONAL MAP ACCURACY STANDARDS
FOR SALE BY U. S. GEOLOGICAL SURVEY, DENVER, COLORADO 80225, OR RESTON, VIRGINIA 22092
AND ARKANSAS GEOLOGICAL COMMISSION, LITTLE ROCK, ARKANSAS 72204
A FOLDER DESCRIBING TOPOGRAPHIC MAPS AND SYMBOLS IS AVAILABLE ON REQUEST

Revisions shown in purple compiled in cooperation with
State of Arkansas agencies from imagery dated 1989-91
and other sources. Map edited 1995
Information shown in purple may not meet USGS content
standards and may conflict with previously mapped contours

QUITMAN, AR
35092-D2-TF-024
1991

DMA 7554 1 NW-SERIES V884