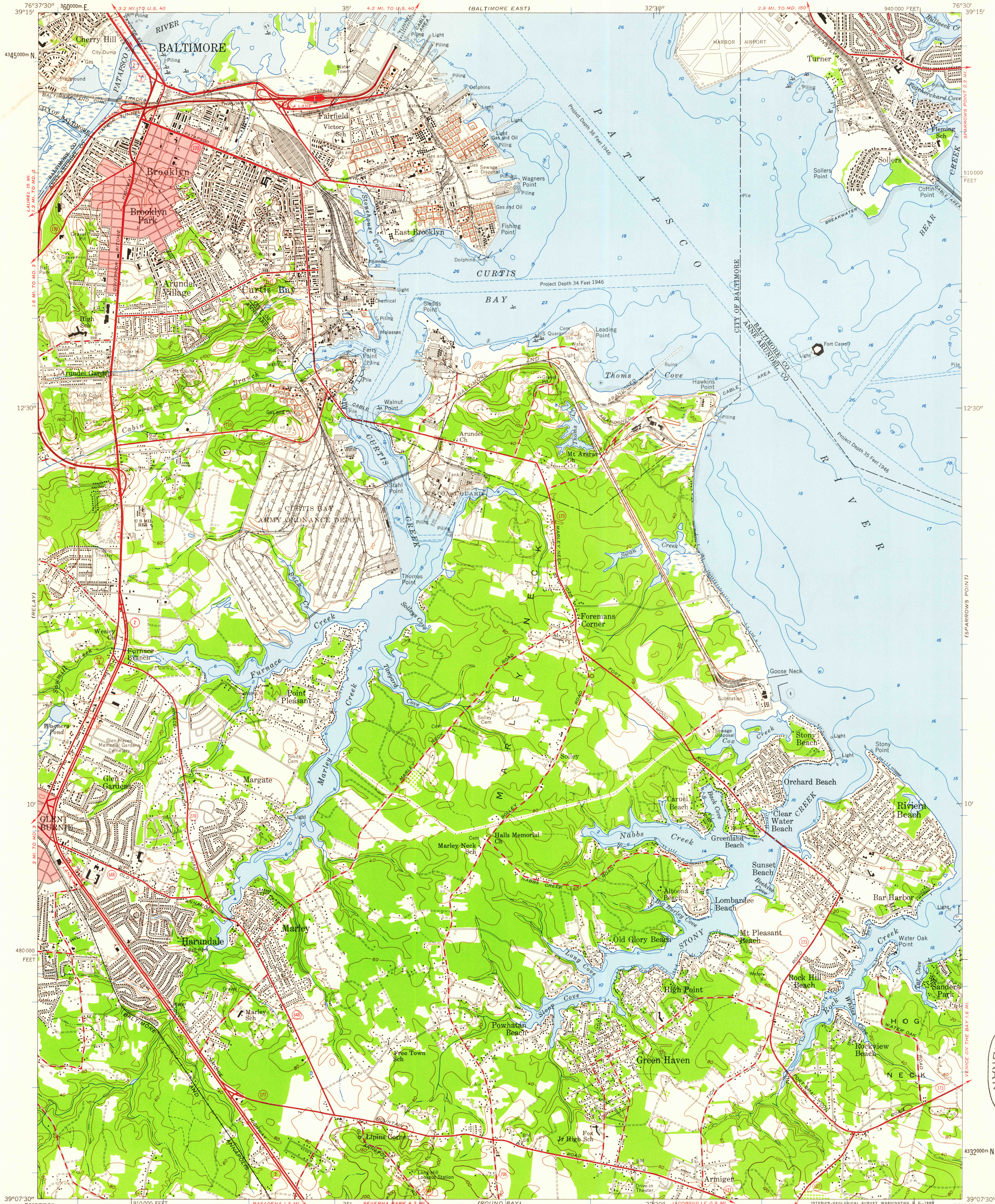


UNITED STATES  
DEPARTMENT OF THE INTERIOR  
GEOLOGICAL SURVEY

UNITED STATES  
DEPARTMENT OF THE ARMY  
CORPS OF ENGINEERS

CURTIS BAY QUADRANGLE  
MARYLAND  
7.5 MINUTE SERIES (TOPOGRAPHIC)  
NE/4 RELAY 15' QUADRANGLE



Mapped by the Army Map Service  
Published for civil use by the Geological Survey

Control by USGS, USC&GS, USCE, and SCS

Topography from aerial photographs by photogrammetric methods  
and by planetable surveys 1943. Planimetric detail revised  
from aerial photographs taken 1955. Field check 1957

Hydrography compiled from USC&GS charts 545 (1948) and 549 (1947)

Polyconic projection. 1927 North American datum  
10,000-foot grid based on Maryland coordinate system  
1000-meter Universal Transverse Mercator grid ticks,  
zone 18, shown in blue

Red tint indicates areas in which only  
landmark buildings are shown

SCALE 1:24,000  
1 0 1000 2000 3000 4000 5000 6000 7000 FEET  
1 5 10 20 30 40 50 60 70 80 90 100 METERS

CONTOUR INTERVAL 20 FEET  
DATUM IS MEAN SEA LEVEL  
DEPTH CURVES AND SOUNDINGS IN FEET—DATUM IS MEAN LOW WATER  
SHORELINE SHOWN REPRESENTS THE APPROXIMATE LINE OF MEAN HIGH WATER  
THE MEAN RANGE OF TIDE IS APPROXIMATELY 1.1 FEET

THIS MAP COMPLIES WITH NATIONAL MAP ACCURACY STANDARDS  
FOR SALE BY U. S. GEOLOGICAL SURVEY, WASHINGTON 25, D. C.  
A FOLDER DESCRIBING TOPOGRAPHIC MAPS AND SYMBOLS IS AVAILABLE ON REQUEST

ROAD CLASSIFICATION  
Heavy-duty ——— Light-duty ———  
Medium-duty ——— Unimproved dirt ———  
U.S. Route ——— State Route ———

CURTIS BAY, MD.  
NE/4 RELAY 15' QUADRANGLE  
N 3907.5—W 7630/7.5

1957

