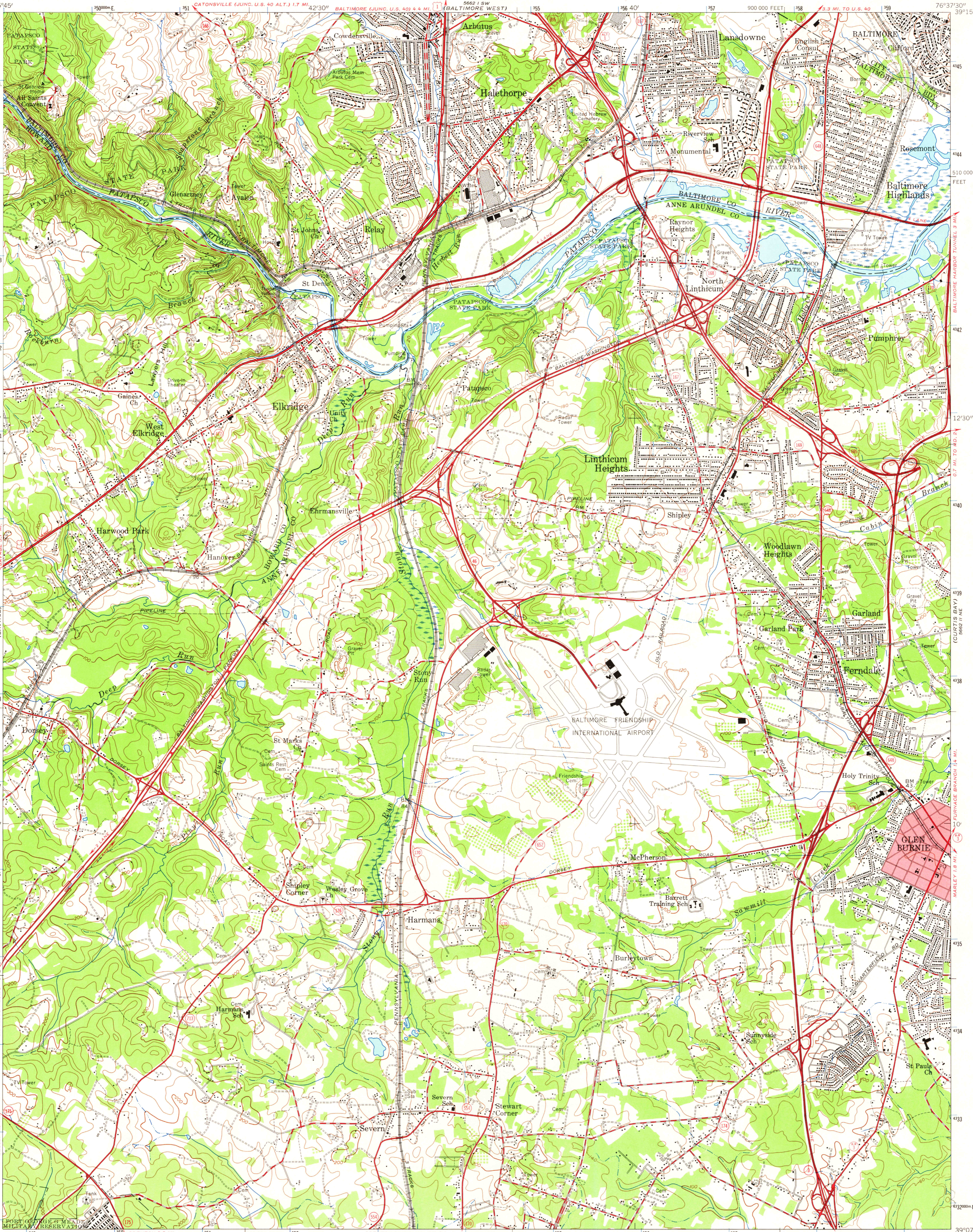


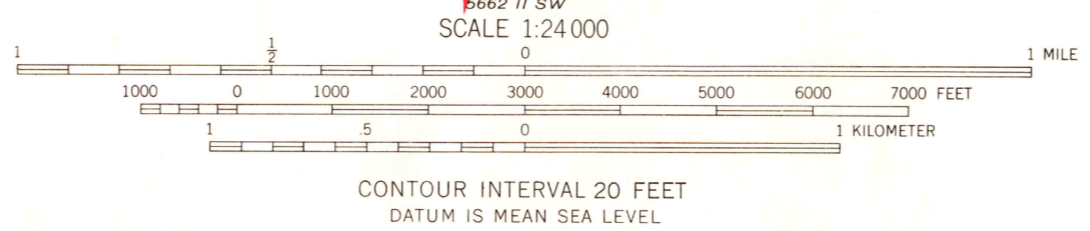
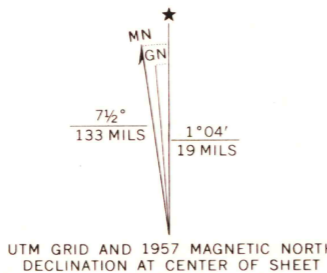
UNITED STATES
DEPARTMENT OF THE INTERIOR
GEOLOGICAL SURVEY

UNITED STATES
DEPARTMENT OF THE ARMY
CORPS OF ENGINEERS

RELAY QUADRANGLE
MARYLAND
7.5 MINUTE SERIES (TOPOGRAPHIC)
NW/4 RELAY 15' QUADRANGLE

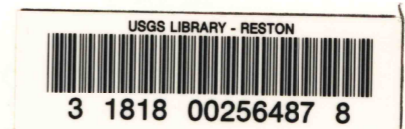


Mapped by the Army Map Service
Published for civil use by the Geological Survey
Control by USGS, USC&GS, USCE, and SCS
Topography from aerial photographs by photogrammetric methods
and by planetable surveys 1943. Planimetric detail revised
from aerial photographs taken 1955. Field check 1957
Polyconic projection. 1927 North American datum
10,000-foot grid based on Maryland coordinate system
1000-meter Universal Transverse Mercator grid ticks,
zone 18, shown in blue
Red tint indicates area in which only
landmark buildings are shown



ROAD CLASSIFICATION

Heavy-duty	Light-duty
Medium-duty	Unimproved dirt
Interstate Route	U.S. Route
	State Route



RELAY, MD.
NW/4 RELAY 15' QUADRANGLE
N 3907.5-W 7637.5/7.5
1957
AMS 5662 II NW-SERIES V833

FILE COPY
NOV 8 1965
MAP INFORMATION OFFICE