

(BLUE RIDGE SUMMIT)

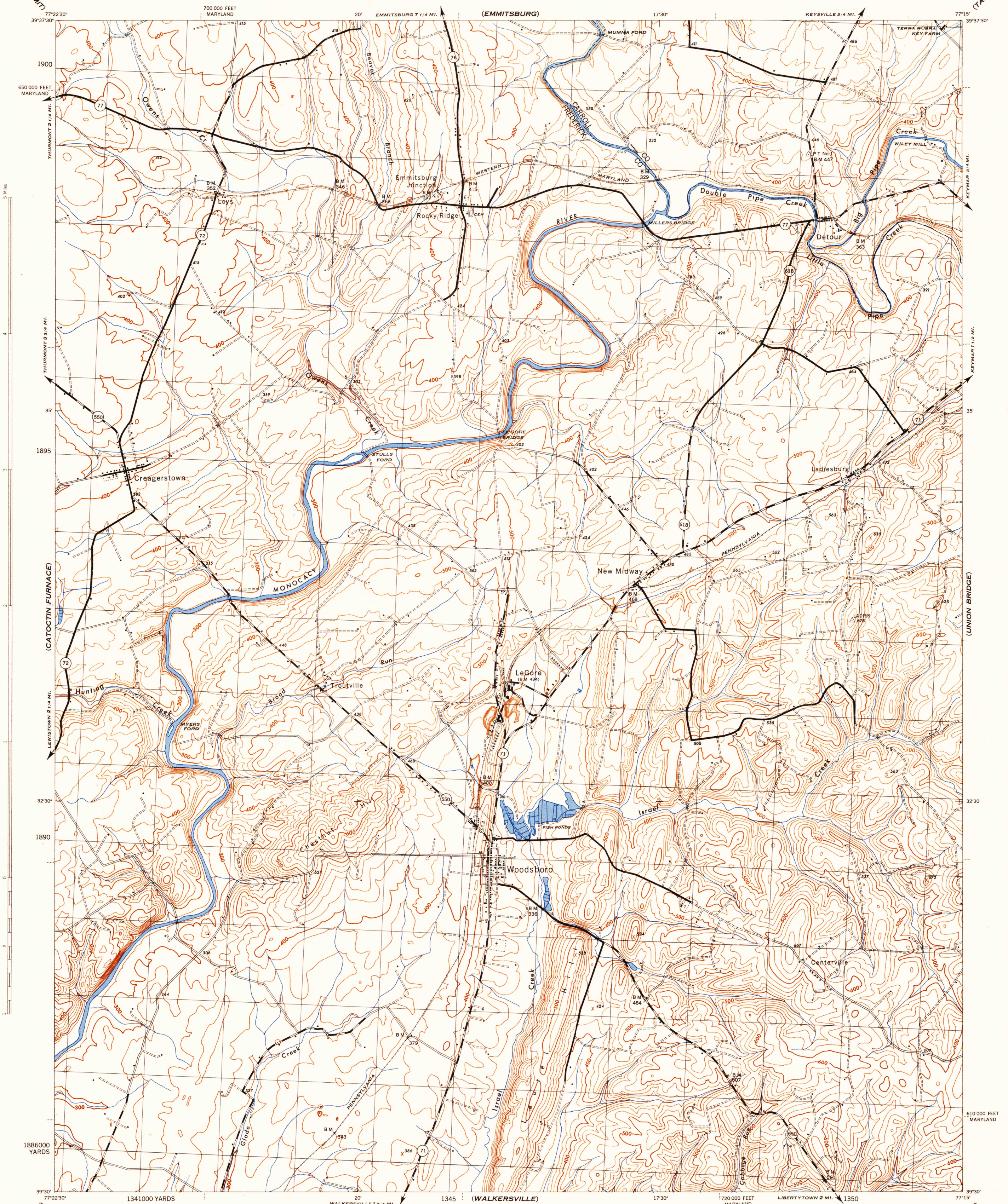
MARYLAND 1:31,680

WAR DEPARTMENT
CORPS OF ENGINEERS, U. S. ARMY

WOODSBORO QUADRANGLE

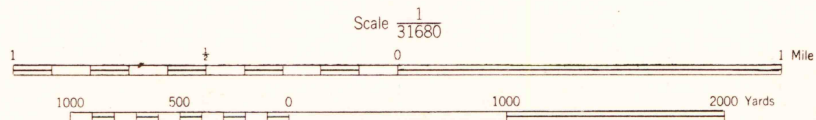
7 1/2 - MINUTE SERIES

(TANEYTOWN)

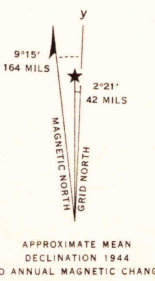


(FREDERICK)

Prepared by U. S. Department of Agriculture, Forest Service,
under the direction of the Chief of Engineers, U. S. Army, 1944.
Control by U. S. Coast and Geodetic Survey, U. S. Geological Survey,
and Forest Service.
Topography by Forest Service stereophotogrammetric methods KEK plotter.
Photography by Soil Conservation Service, 1943.
Polyconic projection, 1927 North American datum.
ROAD CLASSIFICATION
Dependable hard-surface,
heavy duty road. ———— U. S. Route 160
Loose-surface graded,
dry weather road. ———— State Route 30
Secondary hard-surface,
all-weather road. ———— Dirt road. ————
More than two lanes indicated by note along road with tick at point of change. 3 LANE 4 LANE
THIS MAP COMPLIES WITH THE NATIONAL STANDARD MAP ACCURACY REQUIREMENTS.



ONE THOUSAND YARD GRID COMPUTED FROM GRID SYSTEM FOR PROGRESSIVE MAPS
IN THE U. S. ZONE B U. S. C. & G. S. SPECIAL PUBLICATION NO. 59
THE LAST THREE DIGITS OF THE GRID NUMBERS ARE OMITTED
TEN THOUSAND FOOT GRID BASED ON MARYLAND PLANE COORDINATE SYSTEM
NOTE: OFFICERS USING THIS MAP WILL MARK HEREON CORRECTIONS AND ADDITIONS WHICH COME
TO THEIR ATTENTION AND MAIL DIRECT TO: THE CHIEF OF ENGINEERS, WASHINGTON, D. C.



WOODSBORO, MD.
N3930-W7715/7.5

(UNION BRIDGE)

(LIBERTYTOWN)