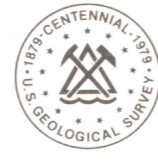
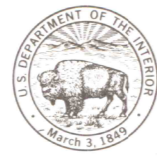


4965 IV NW  
(65 SE-SE-MR)

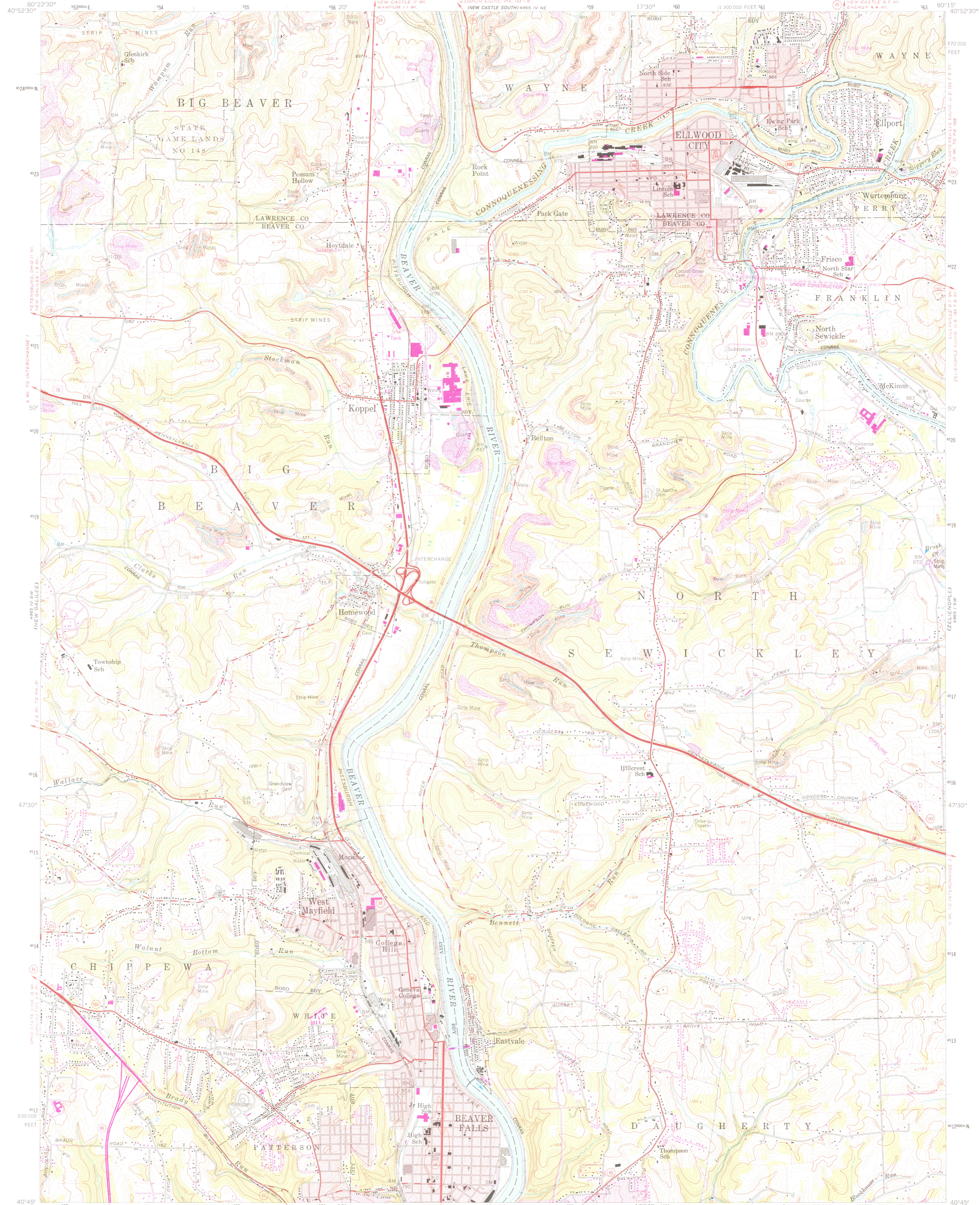
UNITED STATES  
DEPARTMENT OF THE INTERIOR  
GEOLOGICAL SURVEY



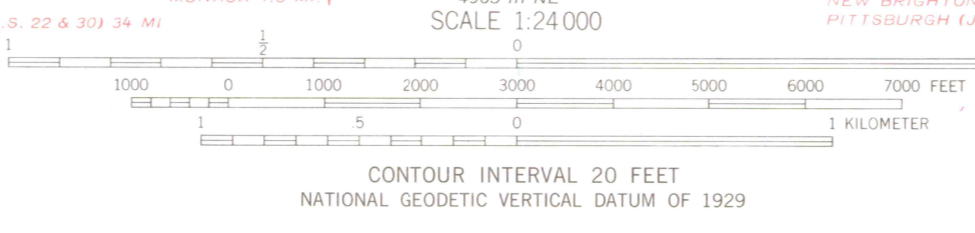
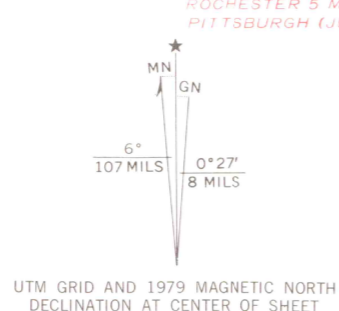
STATE OF PENNSYLVANIA  
DEPARTMENT OF INTERNAL AFFAIRS  
TOPOGRAPHIC AND GEOLOGIC SURVEY

BEAVER FALLS QUADRANGLE  
PENNSYLVANIA  
7.5 MINUTE SERIES (TOPOGRAPHIC)

4965 I NW  
(PORTERSVILLE)



Mapped, edited, and published by the Geological Survey  
Control by USGS and USC&GS  
Topography from aerial photographs by photogrammetric methods  
Aerial photographs taken 1952. Field check 1957  
Polyconic projection. 1927 North American datum  
10,000-foot grid based on Pennsylvania coordinate system,  
south zone  
1000-meter Universal Transverse Mercator grid ticks,  
zone 17, shown in blue  
Fine red dashed lines indicate selected fence and field lines  
visible on aerial photographs. This information is unchecked  
Red tint indicates areas in which only  
landmark buildings are shown  
Unchecked elevations are shown in brown  
There may be private inholdings within the boundaries of  
the National or State reservations shown on this map



THIS MAP COMPLIES WITH NATIONAL MAP ACCURACY STANDARDS  
FOR SALE BY U. S. GEOLOGICAL SURVEY, RESTON, VIRGINIA 22092  
A FOLDER DESCRIBING TOPOGRAPHIC MAPS AND SYMBOLS IS AVAILABLE ON REQUEST

ROAD CLASSIFICATION

Heavy-duty	Light-duty
Unimproved dirt	State Route

BEAVER FALLS, PA.  
N4045-W8015/7.5  
1957  
PHOTOREVISED 1979  
AMS 4965 IV SE-SERIES V831

Revisions shown in purple compiled in cooperation with State of Pennsylvania agencies from aerial photographs taken 1977 and other source data. This information not field checked. Map edited 1979.  
Boundary lines shown in purple compiled from latest information available from the controlling authority  
Purple tint indicates extension of urban areas

U.S. GEOLOGICAL SURVEY  
JUL 1 8 1979  
LIBRARY

QUADRANGLE LOCATION

PENNSYLVANIA

3 1818 00396729 4