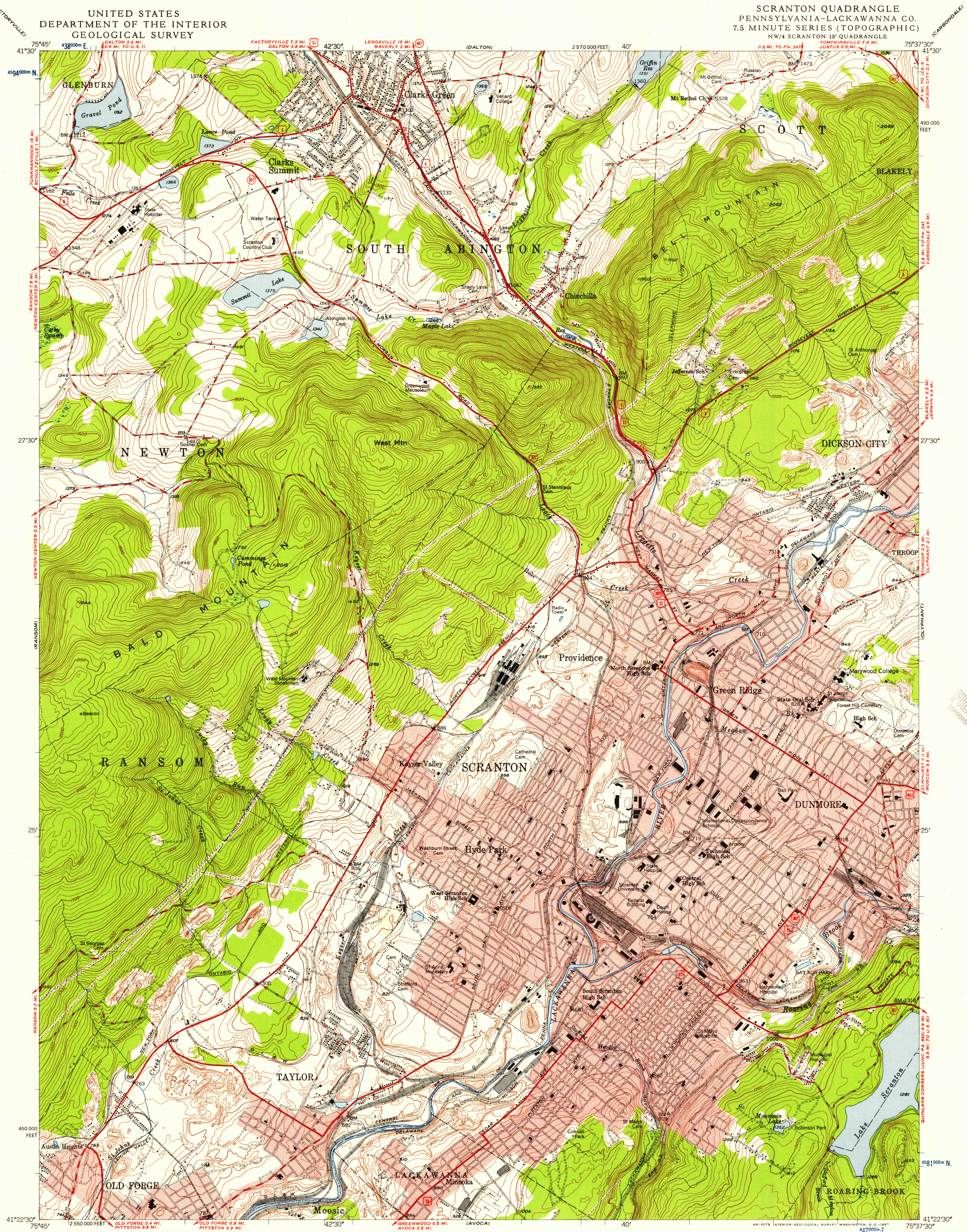


UNITED STATES  
DEPARTMENT OF THE INTERIOR  
GEOLOGICAL SURVEY

SCRANTON QUADRANGLE  
PENNSYLVANIA-LACKAWANNA CO.  
7.5 MINUTE SERIES (TOPOGRAPHIC)  
NW/4 SCRANTON 15' QUADRANGLE  
N41225-W7537.5/7.5



Maped, edited, and published by the Geological Survey

Control by USGS and USC&GS

Topography from aerial photographs by multiplex methods

Aerial photographs taken 1942. Field check 1947

Polyconic projection, 1927 North American datum

10,000-foot grid based on Pennsylvania coordinate system,

north zone

Red tint indicates areas in which only

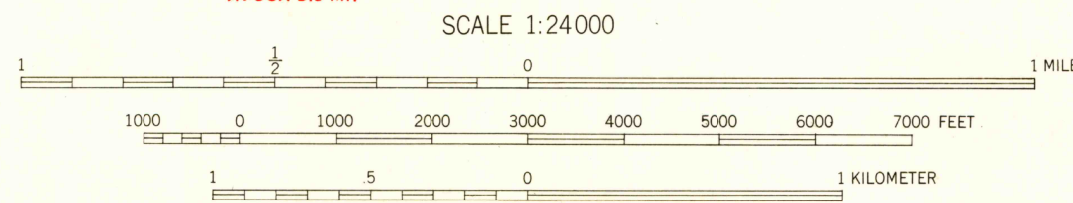
landmark buildings are shown

Contours in strip mine areas compiled from 1942 photography

1000-meter Universal Transverse Mercator grid ticks,

zone 18, shown in blue

10°  
MAGNETIC NORTH  
APPROXIMATE MEAN  
DECLINATION, 1947



CONTOUR INTERVAL 20 FEET

DATUM IS MEAN SEA LEVEL

THIS MAP COMPLIES WITH NATIONAL MAP ACCURACY STANDARDS  
FOR SALE BY U. S. GEOLOGICAL SURVEY, WASHINGTON 25, D. C.  
A FOLDER DESCRIBING TOPOGRAPHIC MAPS AND SYMBOLS IS AVAILABLE ON REQUEST

USGS  
HISTORICAL FILE  
TOPOGRAPHIC DIVISION

U.S.G.S.  
FILE COPY  
TOPOGRAPHIC DIVISION

ROAD CLASSIFICATION  
HARD-SURFACE ALL WEATHER ROADS  
Heavy-duty LANE 16 LANE Improved dirt  
Medium-duty LANE 16 LANE Unimproved dirt  
Loose-surface, graded, or narrow hard-surface  
U. S. Route State Route

SCRANTON, PA.  
NW/4 SCRANTON 15' QUADRANGLE  
N41225-W7537.5/7.5

1947

U.S.G.S.  
FILE COPY  
TOPOGRAPHIC DIVISION

MAY 3 1957

3710