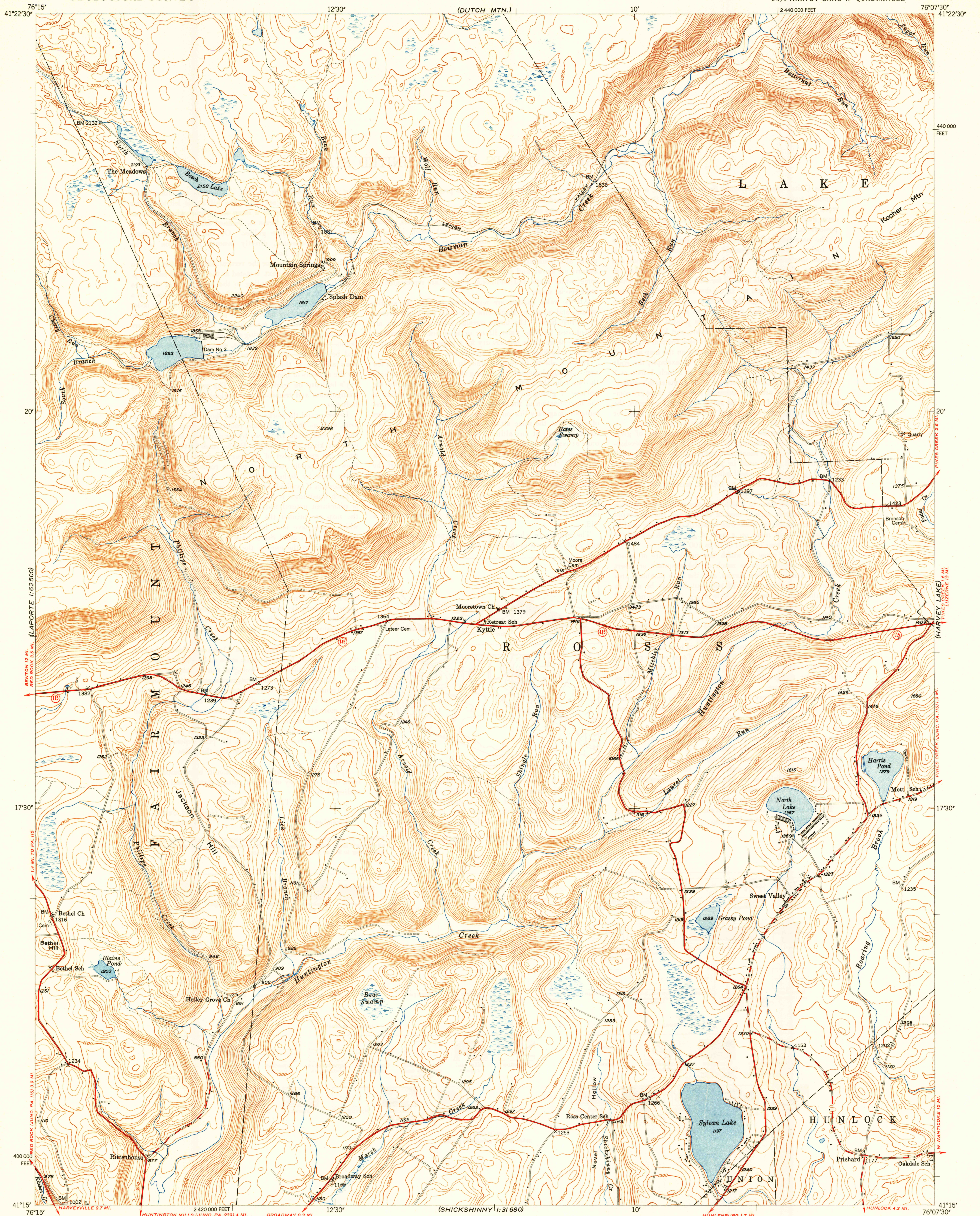


(LAPORTE)
1:62,500

UNITED STATES
DEPARTMENT OF THE INTERIOR
GEOLOGICAL SURVEY

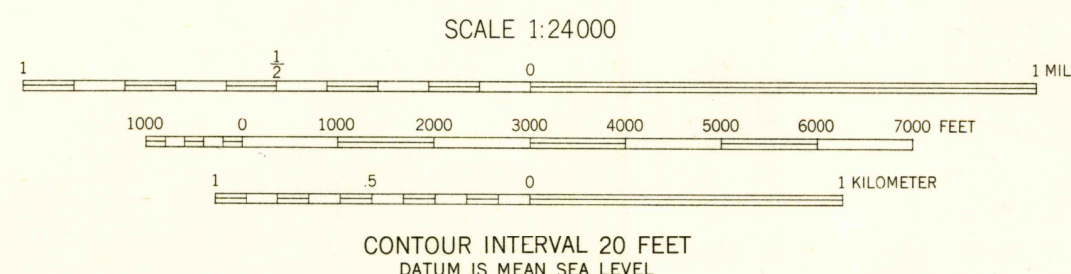
SWEET VALLEY QUADRANGLE
PENNSYLVANIA-LUZERNE CO.
7.5 MINUTE SERIES (TOPOGRAPHIC)
SW/4 HARVEY LAKE 15' QUADRANGLE

(WOKEN)



Maped, edited, and published by the Geological Survey
Control by USGS and USC&GS
Topography from aerial photographs by multiplex methods
Aerial photographs taken 1942. Field check 1946
Polyconic projection. 1927 North American datum
10,000-foot grid based on Pennsylvania coordinate system,
north zone

TRUE NORTH
MAGNETIC NORTH
APPROXIMATE MEAN
DECLINATION, 1946



THIS MAP COMPLIES WITH NATIONAL MAP ACCURACY STANDARDS
FOR SALE BY U. S. GEOLOGICAL SURVEY, WASHINGTON 25, D. C.

ROAD CLASSIFICATION
HARD-SURFACE ALL WEATHER ROADS DRY WEATHER ROADS
Heavy-duty 4 LANE 18 LANE Improved dirt
Medium-duty 4 LANE 18 LANE Unimproved dirt
Loose-surface, graded, or narrow hard-surface
U. S. Route State Route

USGS LIBRARY - RESTON
3 1818 00396150 3

SWEET VALLEY, PA.
SW/4 HARVEY LAKE 15' QUADRANGLE
N4115-W7607.5/7.5

EDITION OF 1949