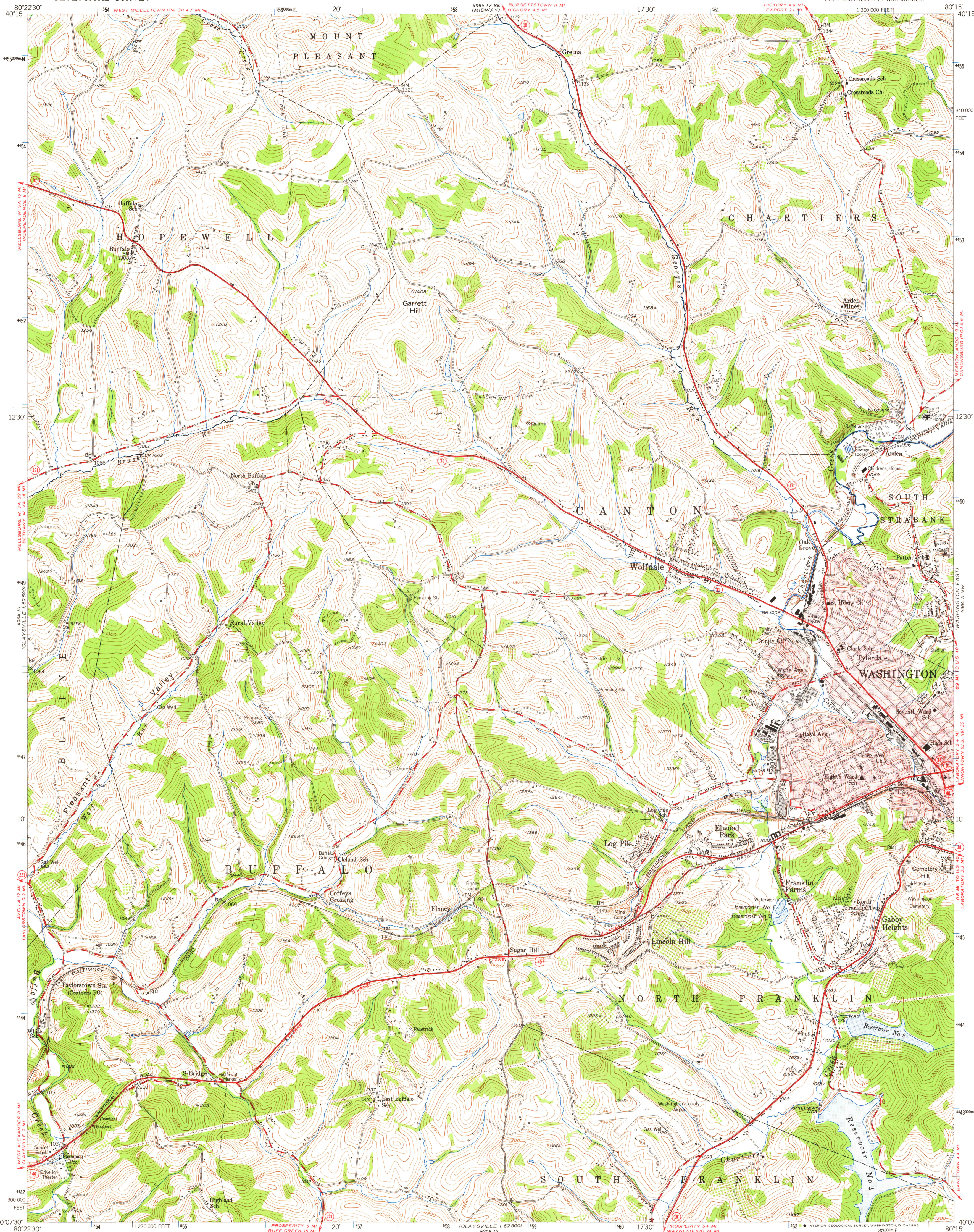


UNITED STATES
DEPARTMENT OF THE INTERIOR
GEOLOGICAL SURVEY

WASHINGTON WEST QUADRANGLE
PENNSYLVANIA-WASHINGTON CO.
7.5 MINUTE SERIES (TOPOGRAPHIC)
NE/4 CLAYSVILLE 15 QUADRANGLE



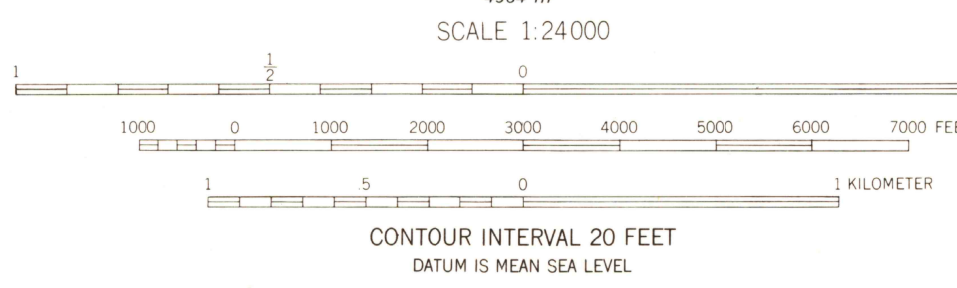
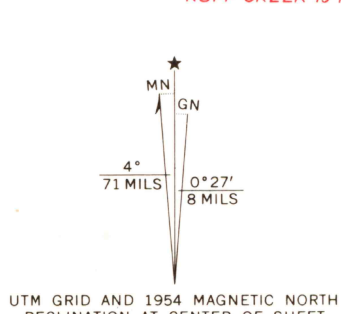
Mapped, edited, and published by the Geological Survey
Control by USGS and USC&GS

Topography from aerial photographs by multiplex methods
Aerial photographs taken 1952. Field check 1954

Polyconic projection. 1927 North American datum
10,000-foot grid based on Pennsylvania coordinate system,
south zone

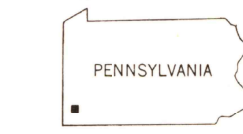
Red tint indicates areas in which only
landmark buildings are shown

All wells are active oil wells unless otherwise indicated
1000-meter Universal Transverse Mercator grid ticks,
zone 17, shown in blue



THIS MAP COMPLIES WITH NATIONAL MAP ACCURACY STANDARDS.
FOR SALE BY U.S. GEOLOGICAL SURVEY, WASHINGTON, D. C. 20242
A FOLDER DESCRIBING TOPOGRAPHIC MAPS AND SYMBOLS IS AVAILABLE ON REQUEST

USGS
HISTORICAL FILE
TOPOGRAPHIC DIVISION



ROAD CLASSIFICATION
Heavy-duty ——— Light-duty ———
Medium-duty ——— Unimproved dirt ———
U.S. Route ——— State Route ———

WASHINGTON WEST, PA.
NE/4 CLAYSVILLE 15 QUADRANGLE
N4007.5-W8015.7.5

1954

AMS 4964 III NE-SERIES V831

U.S.G.S.
FILE 20007
TOPOGRAPHIC DIVISION

USGS Library
Reston, VA.
Tom Armitage

3080
JAN 1 1966