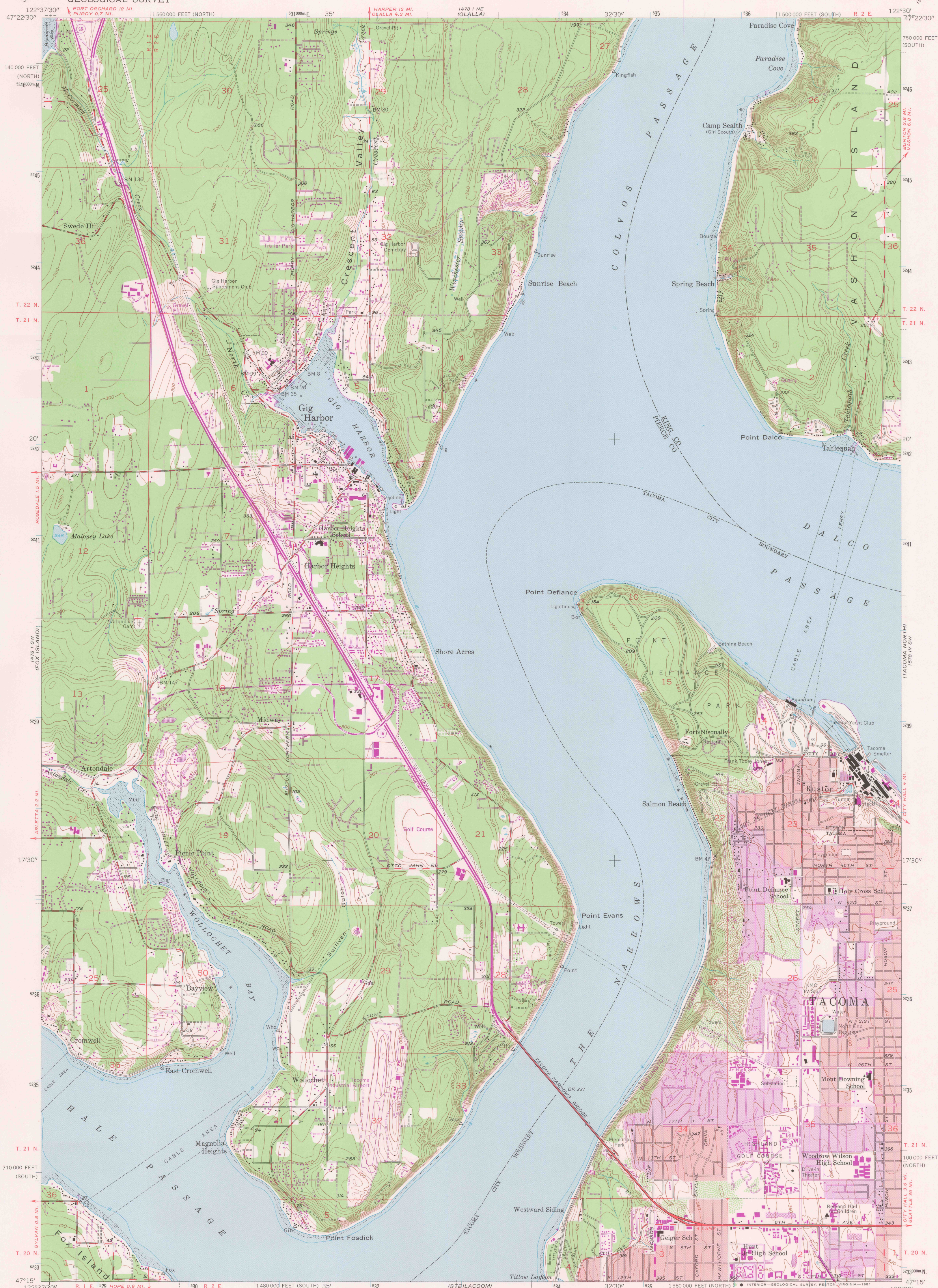


UNITED STATES
DEPARTMENT OF THE INTERIOR
GEOLOGICAL SURVEY

GIG HARBOR QUADRANGLE
WASHINGTON
7.5 MINUTE SERIES (TOPOGRAPHIC)



Maped, edited, and published by the Geological Survey
Topography by photogrammetric methods from aerial
photographs taken 1951. Culture revised in 1959.
Selected hydrographic data compiled from NOS chart 6460 (1958)
This information is not intended for navigational purposes.
Polyconic projection. 10,000-foot grid ticks based on Washington
coordinate system, south and north zones. 1000-meter Universal
Transverse Mercator grid ticks, zone 10, shown in blue
1927 North American Datum. To place on the predicted
North American Datum 1983, move the projection lines
23 meters north and 94 meters east as shown by dashed
corner ticks.
Red tint indicates areas in which only landmark buildings are shown
Revisions shown in purple and woodland compiled from aerial
photographs taken 1978 and other sources. This
information not field checked. Map edited 1981
Purple tint indicates extension of urban areas

SCALE 1:24,000
NATIONAL GEODETIC VERTICAL DATUM OF 1929
DEPTH CURVES AND SOUNDINGS IN FEET—DATUM IS MEAN LOWER LOW WATER
THE RELATIONSHIP BETWEEN THE TWO DATUMS IS VARIABLE
SHORELINE SHOWN REPRESENTS THE APPROXIMATE LINE OF MEAN HIGH WATER
THE MEAN RANGE OF TIDE IS APPROXIMATELY 8 FEET
FOR SALE BY U. S. GEOLOGICAL SURVEY, DENVER, COLORADO 80225, OR RESTON, VIRGINIA 22092
A FOLDER DESCRIBING TOPOGRAPHIC MAPS AND SYMBOLS IS AVAILABLE ON REQUEST

ROAD CLASSIFICATION
Heavy-duty ——— Light-duty ———
Medium-duty ——— Unimproved dirt ———
State Route ———
QUADRANGLE LOCATION
GIG HARBOR, WASH.
N 4715—W 12230/7.5
1959
PHOTOREVISED 1981
DMA 1478 I SE—SERIES V891

SEP 3 1981
2400