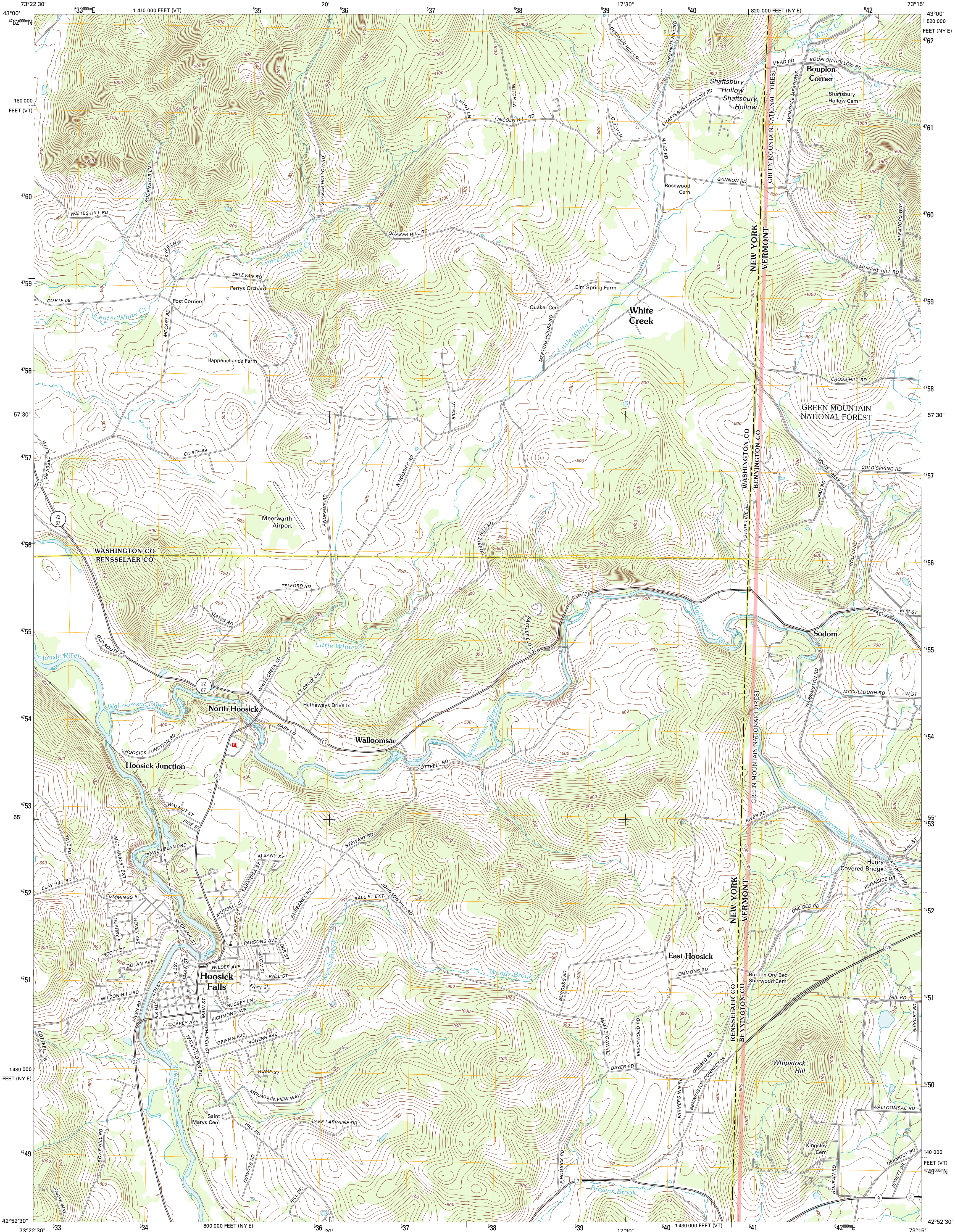




U.S. DEPARTMENT OF THE INTERIOR  
U. S. GEOLOGICAL SURVEY

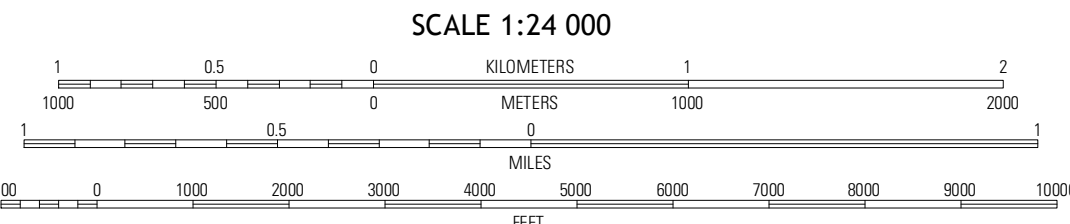
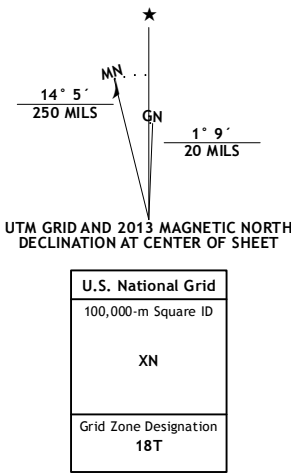


HOOSICK FALLS QUADRANGLE  
NEW YORK-VERMONT  
7.5-MINUTE SERIES



Produced by the United States Geological Survey  
North American Datum of 1983 (NAD83)  
World Geodetic System of 1984 (WGS84). Projection and  
1 000-meter grid: Universal Transverse Mercator, Zone 18T  
10 000-foot ticks: New York Coordinate System of 1983 (east  
zone), Vermont Coordinate System of 1983

Imagery.....NAP, May 2011  
Roads.....©2006-2012 TomTom  
Roads within US Forest Service Lands.....FS Topo Data  
with limited Forest Service updates, 2012  
Names.....GNIS, 2012  
Hydrography.....National Hydrography Dataset, 2011  
Contours.....National Elevation Dataset, 1998  
Boundaries.....Census, IBWC, IBC, USGS, 1972 - 2012



CONTOUR INTERVAL 20 FEET  
NORTH AMERICAN VERTICAL DATUM OF 1988  
This map was produced to conform with the  
National Geospatial Program US Topo Product Standard, 2011.  
A metadata file associated with this product is draft version 0.6.7



QUADRANGLE LOCATION		
Cambridge	Shushan	Arlington
Eagle Bridge	Hoosick Falls	Bennington
Grafton	North Pownal	Pownal

ADJOINING 7.5 QUADRANGLES

ROAD CLASSIFICATION  
Interstate Route  
US Route  
Ramp  
Interstate Route  
US Route  
FS Primary Route  
State Route  
Local Road  
4WD  
State Route  
US Route  
FS Passenger Route  
FS High Clearance Route

Check with local Forest Service unit  
for current travel conditions and restrictions.

HOOSICK FALLS, NY-VT  
2013