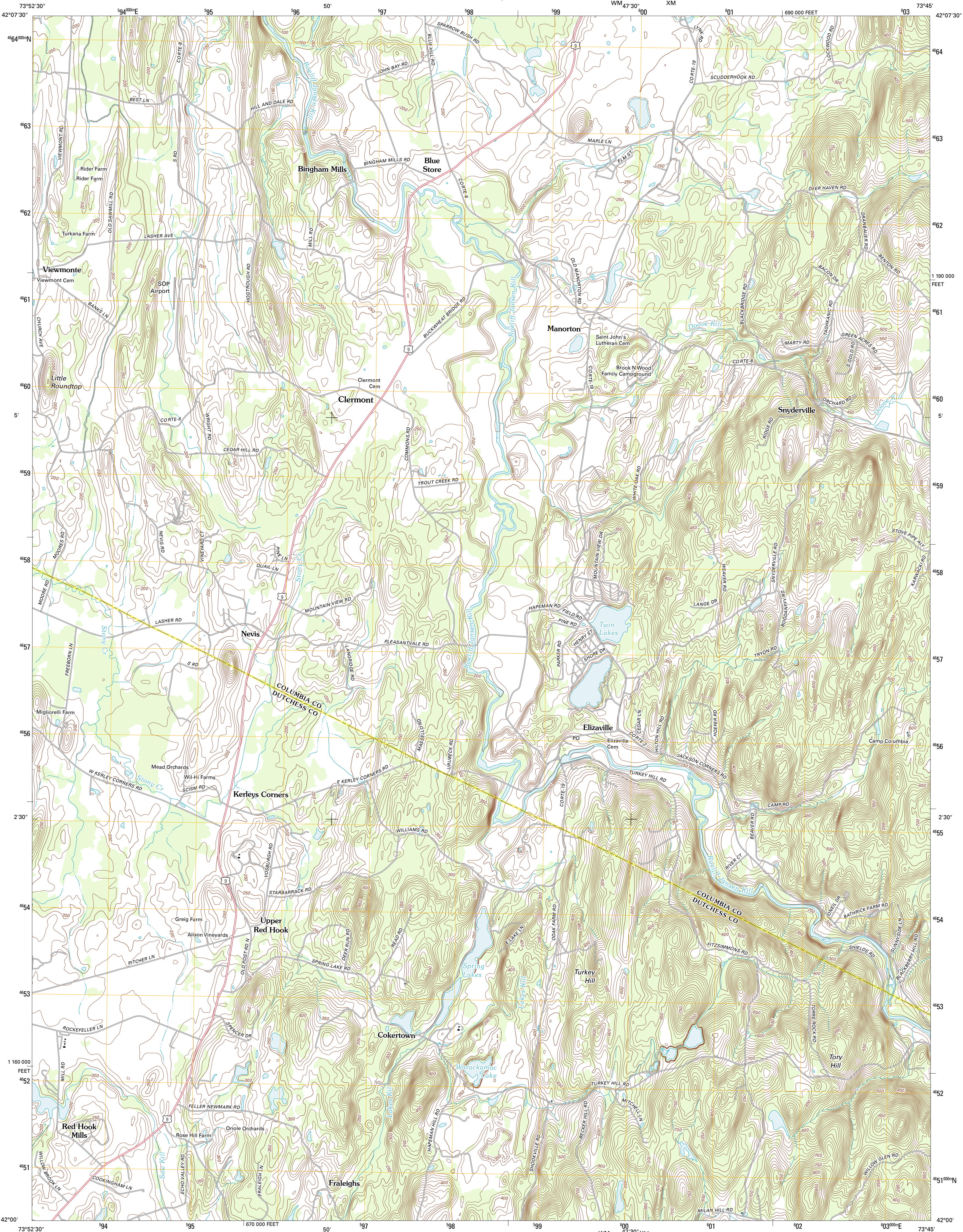




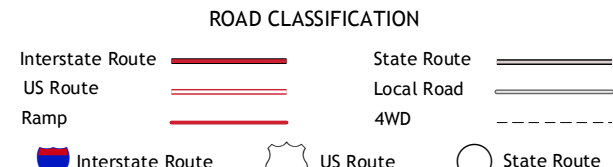
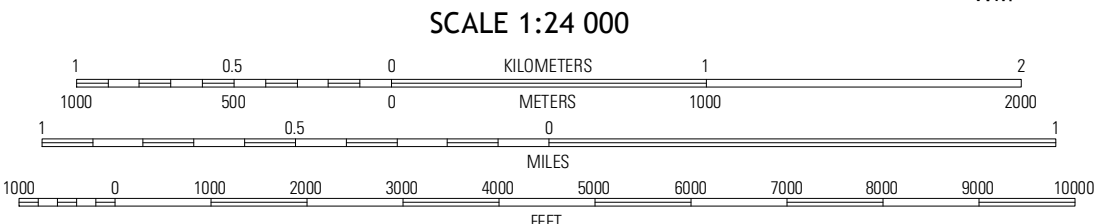
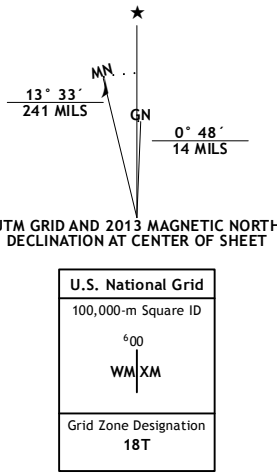
U.S. DEPARTMENT OF THE INTERIOR
U. S. GEOLOGICAL SURVEY



CLERMONT QUADRANGLE
NEW YORK
7.5-MINUTE SERIES



Produced by the United States Geological Survey
North American Datum of 1983 (NAD83).
Roads.....©2006-2012 TomTom
Names.....©2006-2012 TomTom
Hydrography.....National Hydrography Dataset, 2011
Contours.....National Elevation Dataset, 1998
Boundaries.....Census, IBWC, IBC, USGS, 1972 - 2012



| | | |
|----------------|--------------|-------------|
| Cementon | Hudson South | Claverack |
| Saugerties | Clermont | Annurum |
| Kingsboro East | Rock City | Pine Plains |

CLERMONT, NY
2013