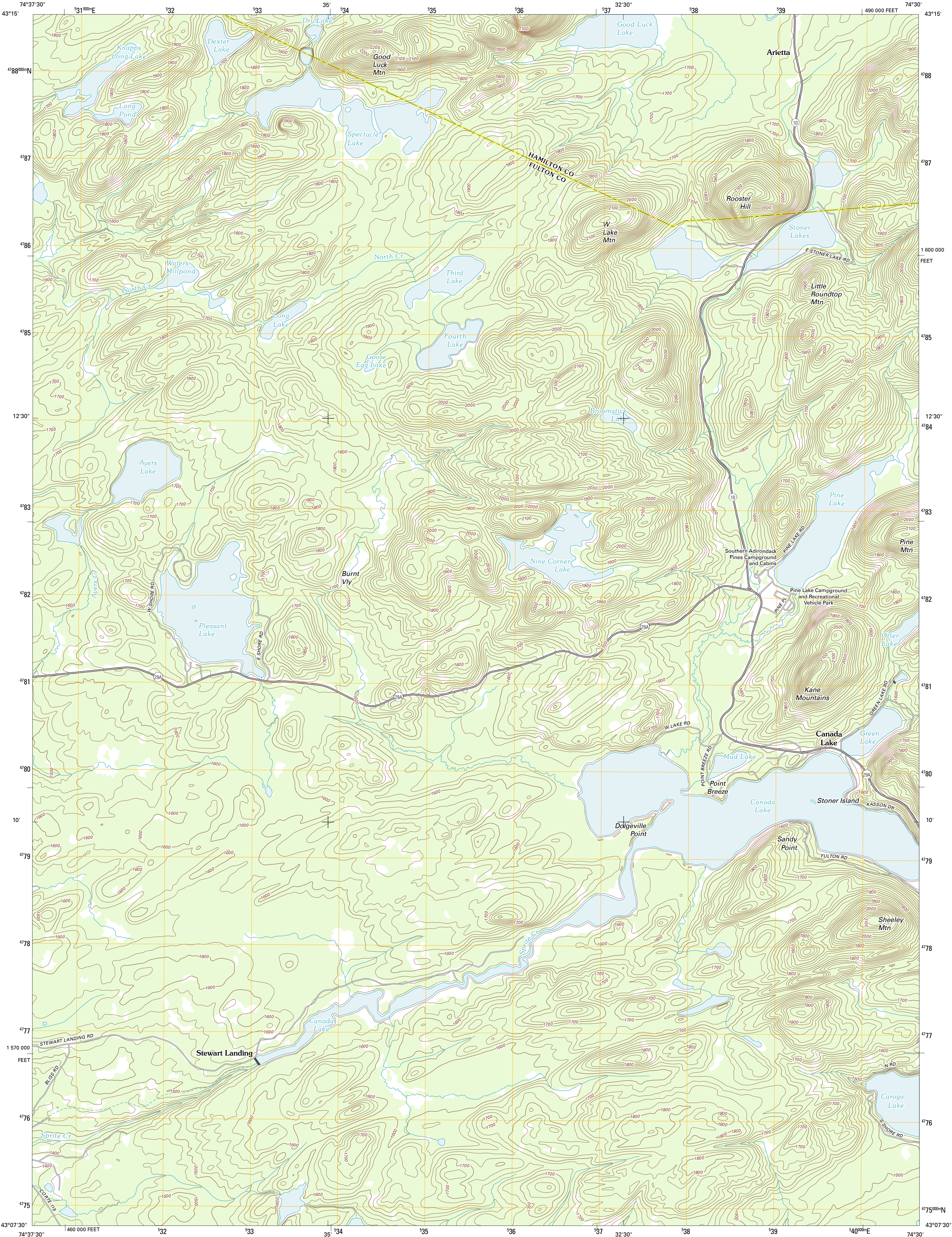




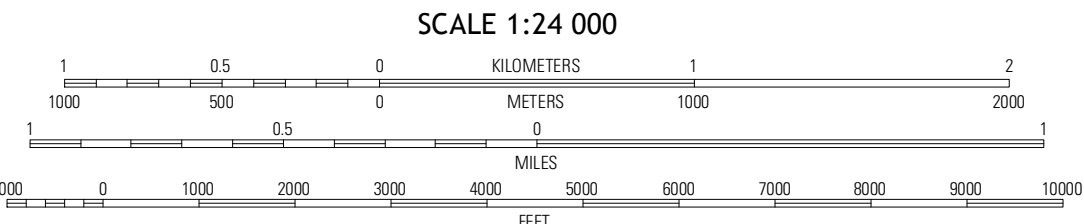
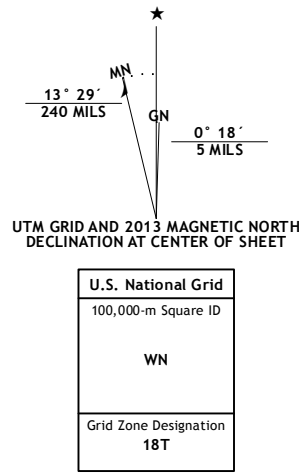
U.S. DEPARTMENT OF THE INTERIOR  
U. S. GEOLOGICAL SURVEY



CANADA LAKE QUADRANGLE  
NEW YORK  
7.5-MINUTE SERIES



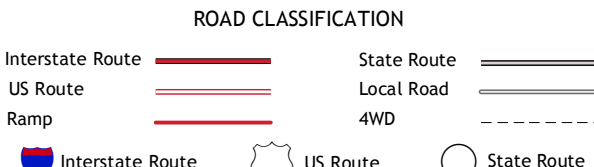
Produced by the United States Geological Survey  
North American Datum of 1983 (NAD83). Projection and  
1,000-meter grid: Universal Transverse Mercator, Zone 18T  
10,000-foot ticks: New York Coordinate System of 1983 (east  
zone)  
Imagery.....NAIP, October 2011  
Roads.....©2006-2012 TomTom  
Names.....GNIS, 2012  
Hydrography.....National Hydrography Dataset, 2011  
Contours.....National Elevation Dataset, 1998  
Boundaries.....Census, IBWC, IBC, USGS, 1972 - 2012



CONTOUR INTERVAL 20 FEET  
NORTH AMERICAN VERTICAL DATUM OF 1988  
This map was produced to conform with the  
National Geospatial Program US Topo Product Standard, 2011.  
A metadata file associated with this product is draft version 0.6.7



Morehouse Lake	Tomany Mountain	Whitehouse
Stratford	Canada Lake	Canga Lake
Oppenheim	Lassellville	Peck Lake



CANADA LAKE, NY  
2013