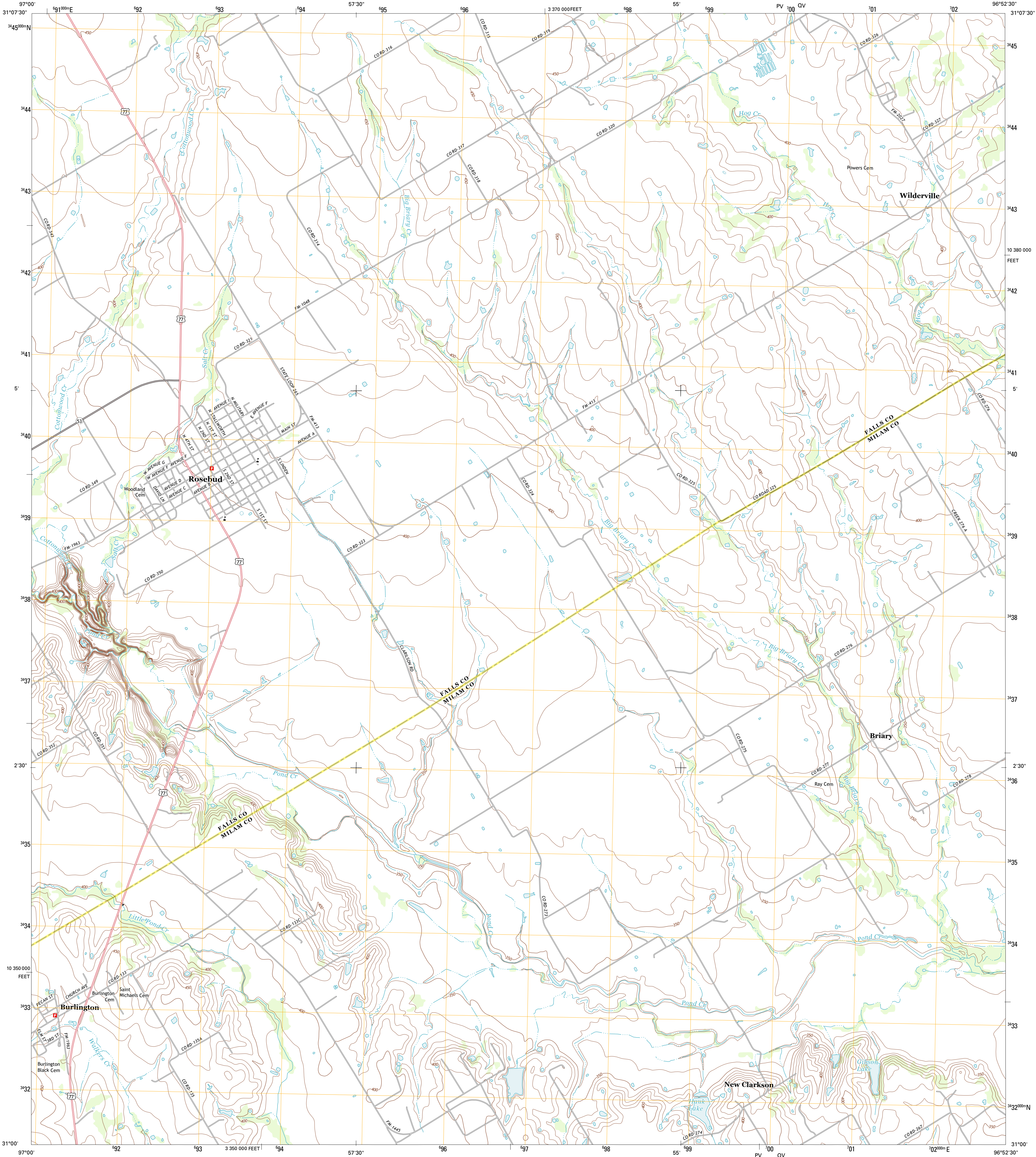




U.S. DEPARTMENT OF THE INTERIOR  
U. S. GEOLOGICAL SURVEY



ROSEBUD QUADRANGLE  
TEXAS  
7.5-MINUTE SERIES



Produced by the United States Geological Survey  
North American Datum of 1983 (NAD83)  
World Geodetic System of 1984 (WGS84). Projection and  
1 000-meter grid: Universal Transverse Mercator, Zone 14R  
10 000-foot ticks: Texas Coordinate System of 1983 (central  
zone)

Imagery.....NAIP, August 2010  
Roads.....C2006-2012 TomTom  
Names.....GNS, 2012  
Hydrography.....National Hydrography Dataset, 2010  
Contours.....National Elevation Dataset, 2004  
Boundaries.....Census, IBWC, IBC, USGS, 1972 - 2012

UTM GRID AND 2013 MAGNETIC NORTH  
DECLINATION AT CENTER OF SHEET

|   |
|---|
| U.S. National Grid<br>100,000-m Square ID |
| 790<br>PV QV                              |
| Grid Zone Designation<br>14R              |

SCALE 1:24 000

1 0.5 1 2  
1000 500 0 1000 2000  
KILOMETERS

1 0.5 1  
1000 500 0 1000 2000  
METERS

1 0 1000 2000 3000 4000 5000 6000 7000 8000 9000 10000  
MILES

1000 0 1000 2000 3000 4000 5000 6000 7000 8000 9000 10000  
FEET

CONTOUR INTERVAL 10 FEET  
NORTH AMERICAN VERTICAL DATUM OF 1988

This map was produced to conform with the  
National Geospatial Program US Topo Product Standard, 2011.  
A metadata file associated with this product is draft version 0.6.7

QUADRANGLE LOCATION

|            |              |             |
|------------|--------------|-------------|
| Lott       | Odar Springs | Reagan      |
| Westphalia | Rosebud      | Bailleville |
| Yarrellton | Ben Arnold   | Mayfield    |

ADJOINING 7.5 QUADRANGLES

ROAD CLASSIFICATION

Interstate Route  
US Route  
Ramp  
State Route  
Local Road  
4WD  
State Route

ROSEBUD, TX  
2013