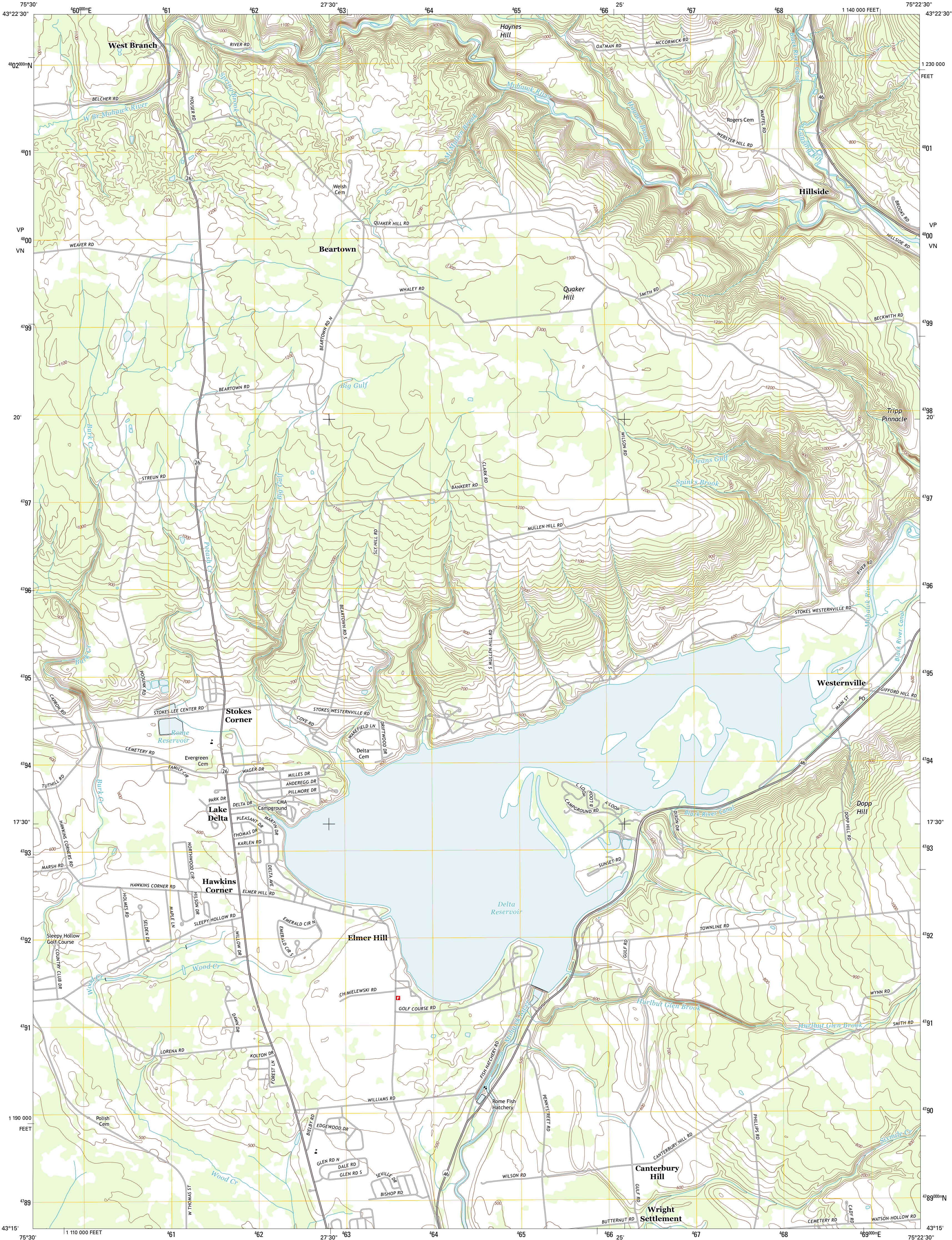




U.S. DEPARTMENT OF THE INTERIOR  
U. S. GEOLOGICAL SURVEY

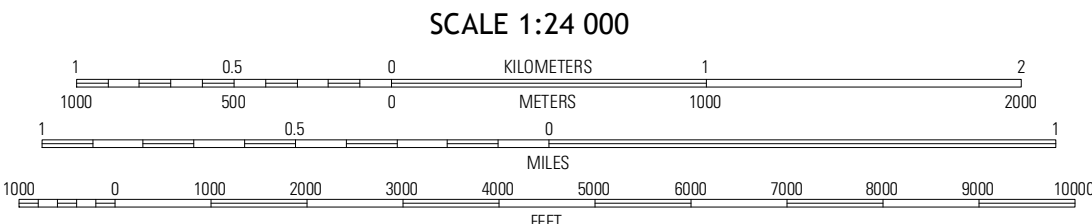
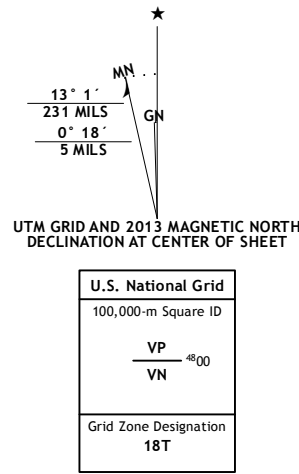


WESTERNVILLE QUADRANGLE  
NEW YORK-ONEIDA CO.  
7.5-MINUTE SERIES



Produced by the United States Geological Survey  
North American Datum of 1983 (NAD83). Projection and  
1 000-meter grid: Universal Transverse Mercator, Zone 18T  
10 000-foot ticks: New York Coordinate System of 1983 (central  
zone)

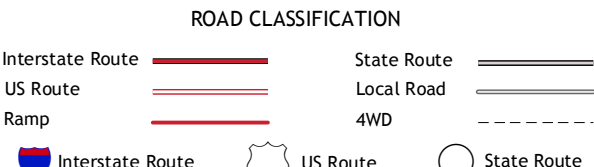
Imagery.....NAIP, July 2011  
Roads.....©2006-2012 TomTom  
Names.....GNSS, 2012  
Hydrography.....National Hydrography Dataset, 2011  
Contours.....National Elevation Dataset, 1998  
Boundaries.....Census, IBWC, IBC, USGS, 1972 - 2012



CONTOUR INTERVAL 20 FEET  
NORTH AMERICAN VERTICAL DATUM OF 1988  
This map was produced to conform with the  
National Geospatial Program US Topo Product Standard, 2011.  
A metadata file associated with this product is draft version 0.6.7



Point Rock	West Lexden	Boonsville
Lee Center	Westernville	North Western
Verona	Rome	Oriskany



WESTERNVILLE, NY  
2013