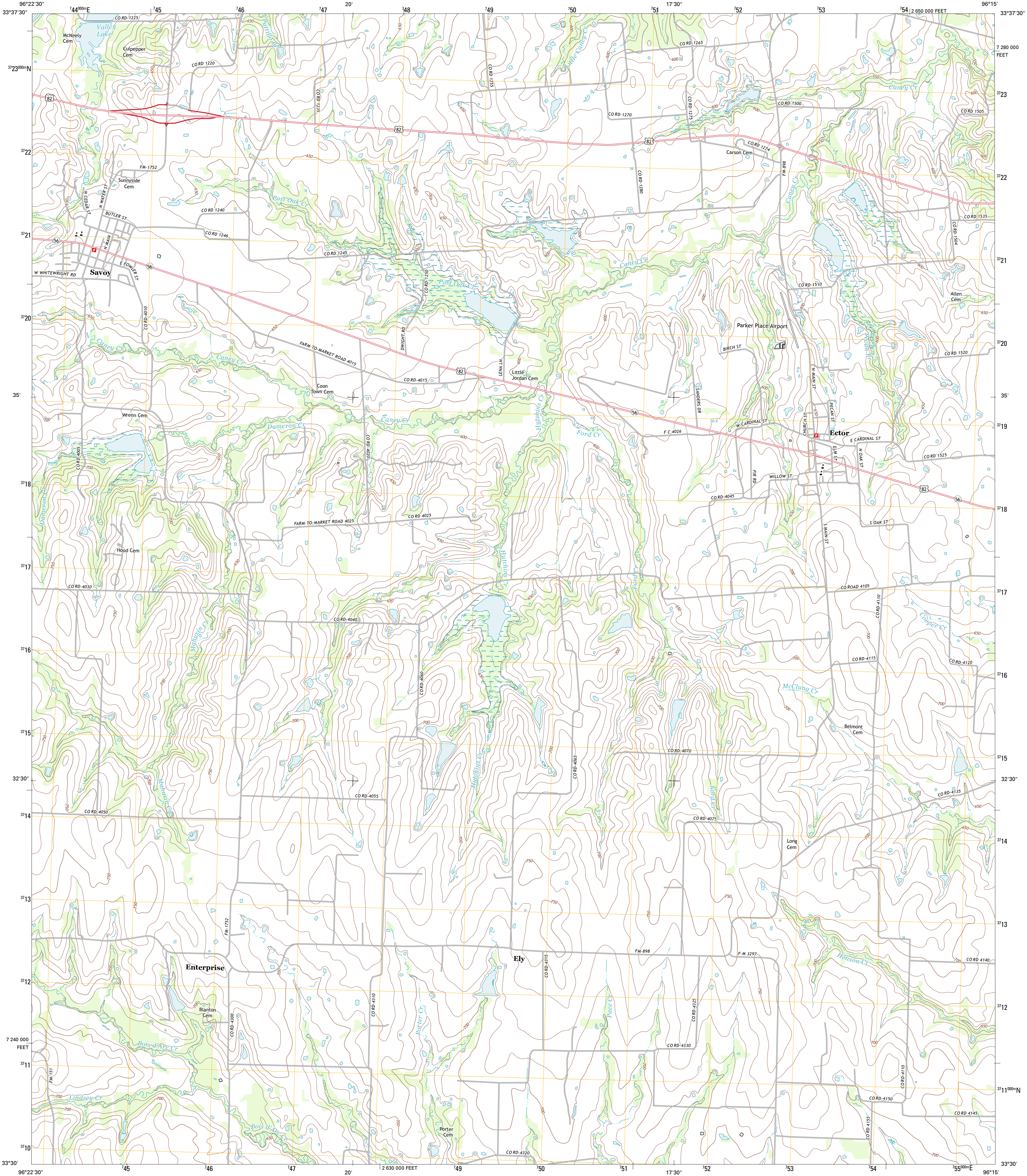




U.S. DEPARTMENT OF THE INTERIOR  
U. S. GEOLOGICAL SURVEY

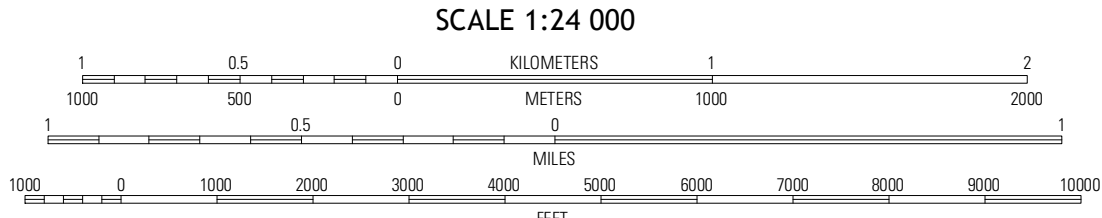
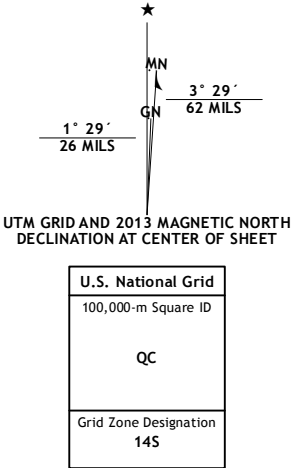


ECTOR QUADRANGLE  
TEXAS-FANNIN CO.  
7.5-MINUTE SERIES



Produced by the United States Geological Survey  
North American Datum of 1983 (NAD83)  
World Geodetic System of 1984 (WGS84). Projection and  
1 000-meter grid: Universal Transverse Mercator, Zone 14S  
10 000-foot ticks: Texas Coordinate System of 1983 (north  
central zone)

Imagery.....NAIP, August 2010  
Roads.....©2006-2012 TomTom  
Names.....GNIS, 2012  
Hydrography.....National Hydrography Dataset, 2010  
Contours.....National Elevation Dataset, 2004  
Boundaries.....Census, IBWC, IBC, USGS, 1972 - 2012



SCALE 1:24 000

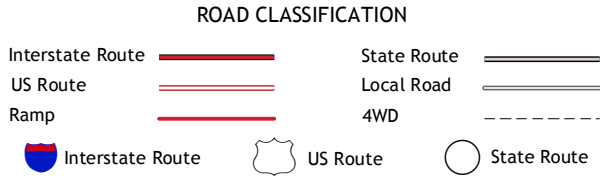
CONTOUR INTERVAL 10 FEET  
NORTH AMERICAN VERTICAL DATUM OF 1988

This map was produced to conform with the  
National Geospatial Program US Topo Product Standard, 2011.  
A metadata file associated with this product is draft version 0.6.7



QUADRANGLE LOCATION		
Ambrose	Mulberry	Lake Bonham
Whitewright	Ector	Bonham
Pilot Grove	Trenon	Leonard

ADJOINING 7.5 QUADRANGLES



ECTOR, TX  
2013