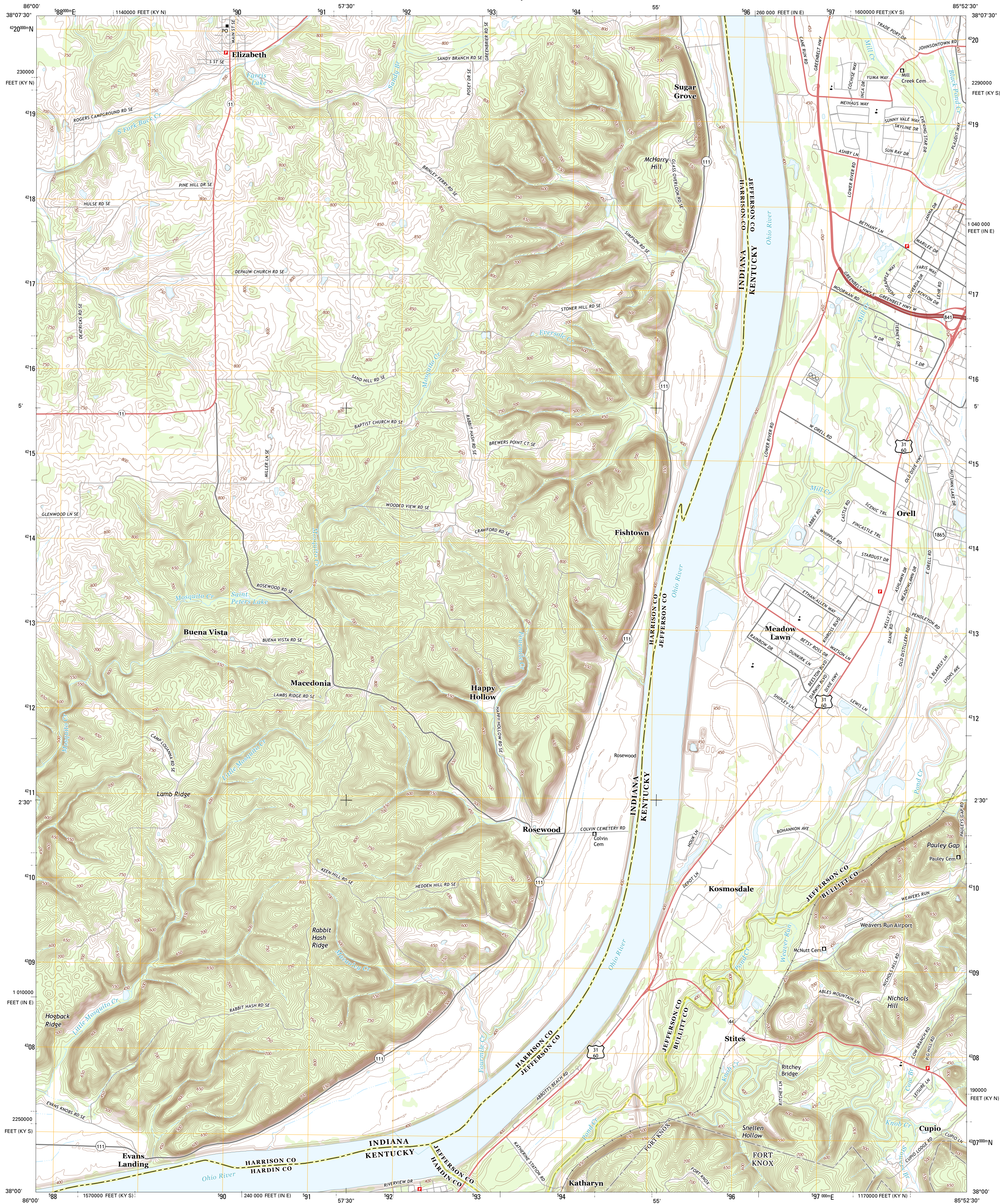




U.S. DEPARTMENT OF THE INTERIOR
U. S. GEOLOGICAL SURVEY

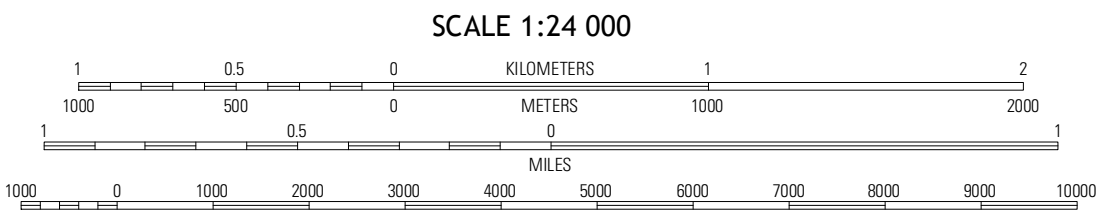
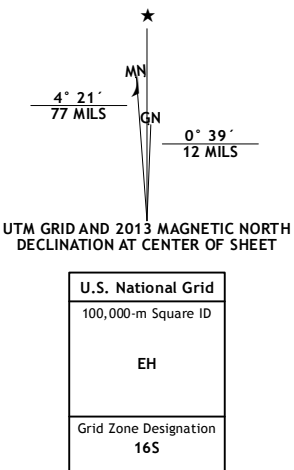


KOSMOSDALE QUADRANGLE
KENTUCKY-INDIANA
7.5-MINUTE SERIES



Produced by the United States Geological Survey
North American Datum of 1983 (NAD83)
World Geodetic System of 1984 (WGS84). Projection and
1 000-foot ticks: Indiana Coordinate System of 1983 (east
zone), Kentucky Coordinate System of 1983 (north and south
zones)

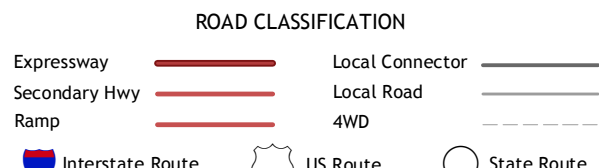
Imagery.....NAIP, June 2012
Roads.....©2006-2012 TomTom
Names.....GNIS, 2012
Hydrography.....National Hydrography Dataset, 2012
Contours.....National Elevation Dataset, 2002
Boundaries.....Census, IBGC, IBC, USGS, 1972-2012



CONTOUR INTERVAL 10 FEET
NORTH AMERICAN VERTICAL DATUM OF 1988
This map was produced to conform with the
National Geospatial Program US Topo Product Standard, 2011.
A metadata file associated with this product is draft version 0.6.8



QUADRANGLE LOCATION		
Corydon East	Lanesville	Louisville West
Lacuna	Kosmosdale	Valley Station
Rock Haven	Fort Knox	Pitts Point



KOSMOSDALE, KY-IN
2013

ADJOINING 7.5 QUADRANGLES