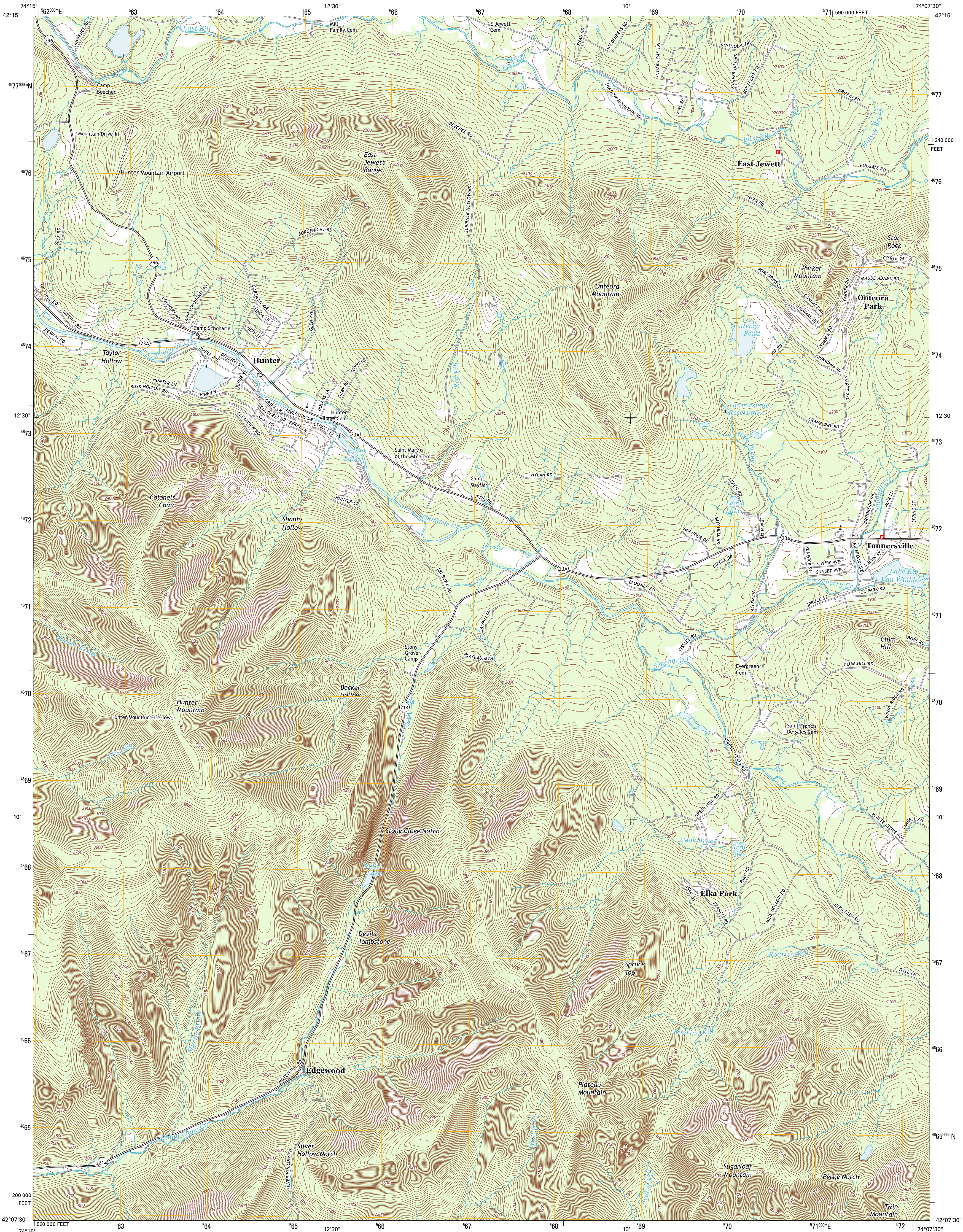




U.S. DEPARTMENT OF THE INTERIOR  
U. S. GEOLOGICAL SURVEY

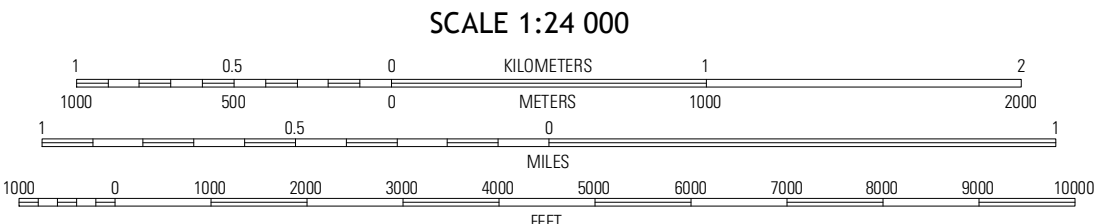
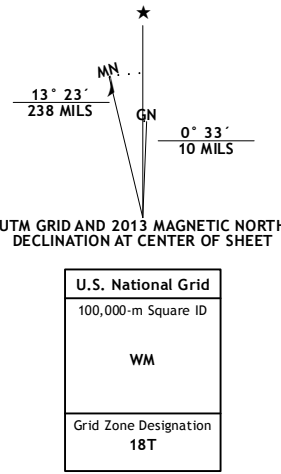


HUNTER QUADRANGLE  
NEW YORK-GREENE CO.  
7.5-MINUTE SERIES



Produced by the United States Geological Survey  
North American Datum of 1983 (NAD83). Projection and  
1 000-meter grid: Universal Transverse Mercator, Zone 18T  
10 000-foot ticks: New York Coordinate System of 1983 (east  
zone)

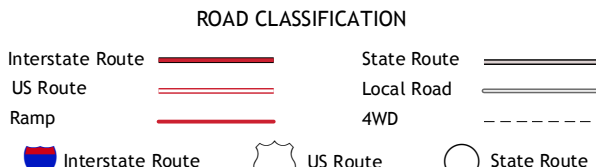
Imagery.....NAIP, July 2011  
Roads.....©2006-2012 TomTom  
Names.....©2006-2012 TomTom  
Hydrography.....National Hydrography Dataset, 2011  
Contours.....National Elevation Dataset, 1998  
Boundaries.....Census, IBC, USGS, 1972 - 2012



QUADRANGLE LOCATION

Ashland	Hennsville	Freehold
Lexington	Hunter	Kanterskill Clove
Phoenixia	Bourneville	Woodstock

ADJOINING 7.5 QUADRANGLES



HUNTER, NY  
2013