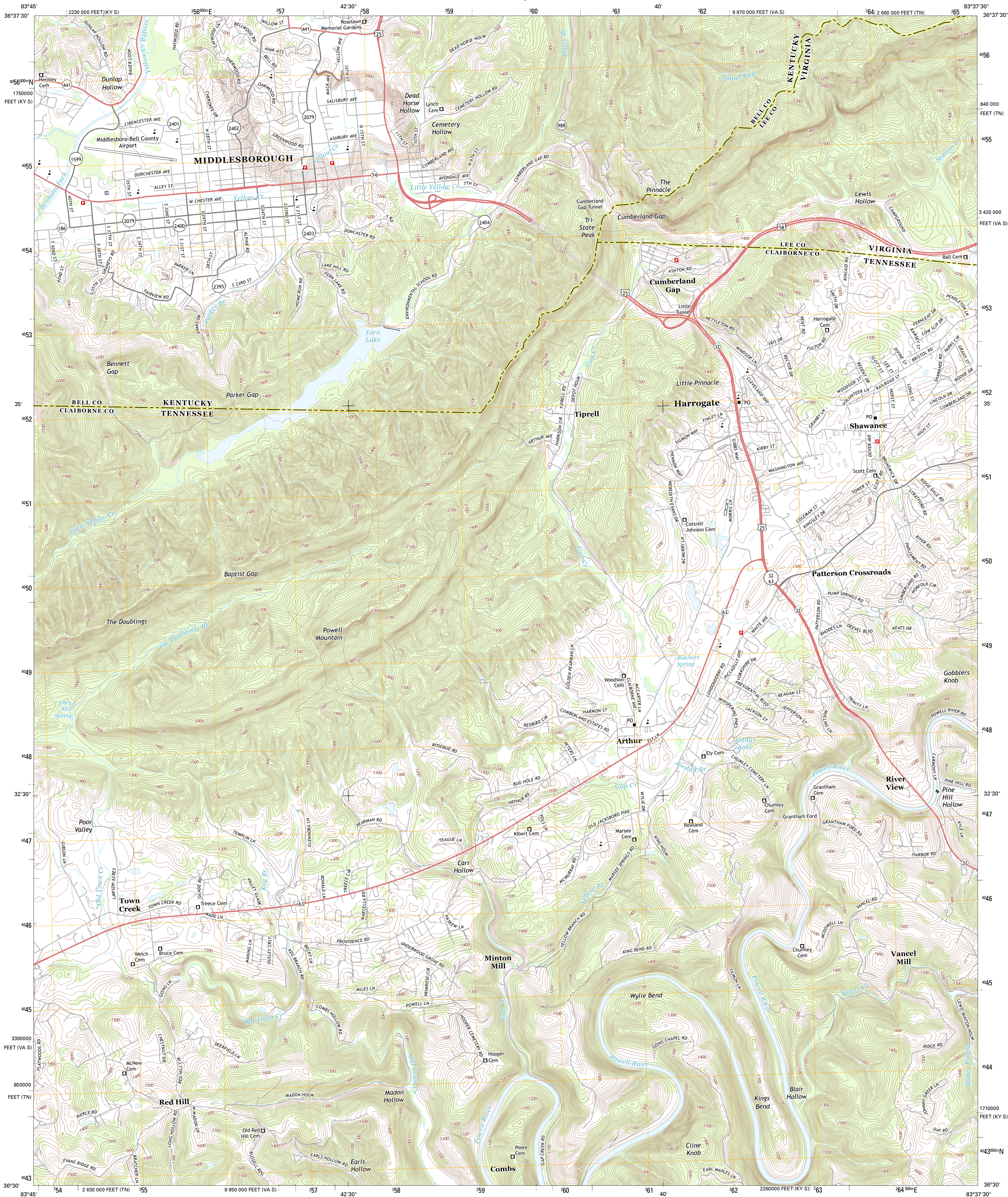




U.S. DEPARTMENT OF THE INTERIOR  
U. S. GEOLOGICAL SURVEY



MIDDLESBORO SOUTH QUADRANGLE  
KENTUCKY-TENNESSEE-VIRGINIA  
7.5-MINUTE SERIES

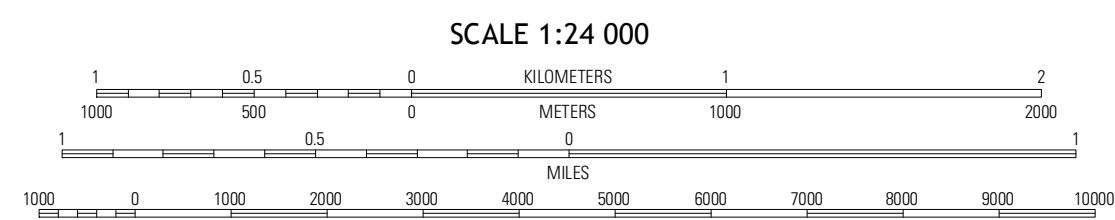


Produced by the United States Geological Survey  
North American Datum of 1983 (NAD83)  
World Geodetic System of 1984 (WGS84) Projection and  
1 000-meter grid; Universal Transverse Mercator; Zone 17S  
10 000-foot ticks; Tennessee Coordinate System of 1983,  
Kentucky Coordinate System of 1983 (south zone), Virginia  
Coordinate System of 1983 (south zone)

Imagery.....NAIP, June 2012  
Roads.....©2006-2012 TomTom  
Names.....©2012-2012 TomTom  
Hydrography.....National Hydrography Dataset, 2012  
Contours.....National Elevation Dataset, 1999  
Boundaries.....Census, IBW, IBC, USGS, 1972-2012

UTM GRID AND 2013 MAGNETIC NORTH  
DECLINATION AT CENTER OF SHEET

U.S. National Grid
100,000-m Square ID
KA
Grid Zone Designation
17S



This map was produced to conform with the  
National Geospatial Program US Topo Product Standard, 2011.  
A metadata file associated with this product is draft version 0.6.8



QUADRANGLE LOCATION

Kayjay	Middlesboro North	Varilla
Fork Ridge	Middlesboro South	Wheeler
Aumms	Clouds	Taxwell

ADJOINING 7.5' QUADRANGLES

ROAD CLASSIFICATION  
Expressway  
Secondary Hwy  
Ramp  
Local Connector  
Local Road  
4WD  
Interstate Route  
US Route  
State Route

MIDDLESBORO SOUTH, KY-TN-VA  
2013