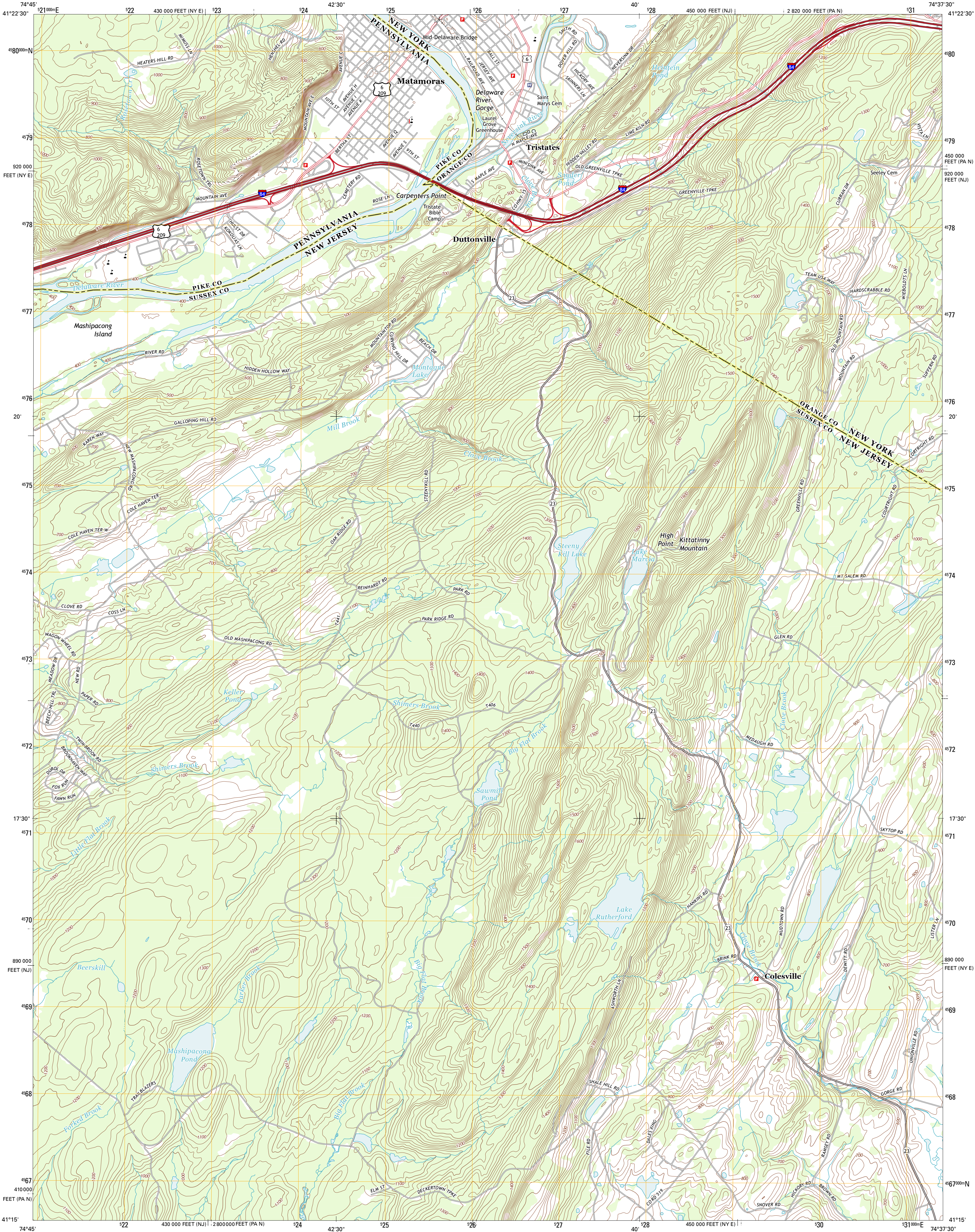




U.S. DEPARTMENT OF THE INTERIOR  
U. S. GEOLOGICAL SURVEY

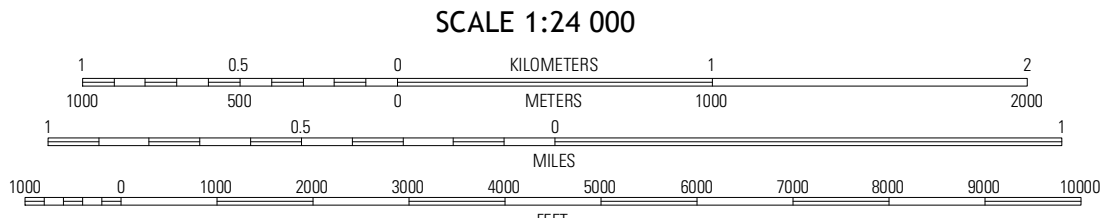
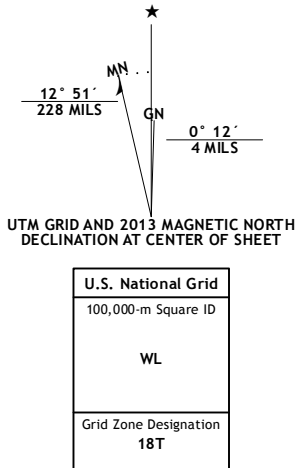


PORT JERVIS SOUTH QUADRANGLE  
NEW YORK-NEW JERSEY-PENNSYLVANIA  
7.5-MINUTE SERIES



Produced by the United States Geological Survey  
North American Datum of 1983 (NAD83)  
World Geodetic System of 1984 (WGS84). Projection and  
1000-meter grid: Universal Transverse Mercator, Zone 18T  
10 000-foot ticks: New Jersey Coordinate System of 1983, New  
York Coordinate System of 1983 (east zone), Pennsylvania  
Coordinate System of 1983 (north zone)

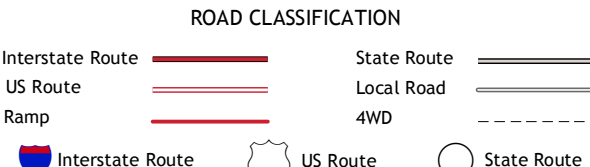
Imagery.....NAIP, July 2010 - July 2011  
Roads.....©2006-2012 TomTom  
Names.....GN5, 2012  
Hydrography.....National Hydrography Dataset, 2010  
Contours.....National Elevation Dataset, 2000  
Boundaries.....Census, IBWC, IBC, USGS, 1972 - 2012



This map was produced to conform with the  
National Geospatial Program US Topo Product Standard, 2011.  
A metadata file associated with this product is draft version 0.6.7



Pond Rddy	Port Jervis North	Oliville
Milford	Port Jervis South	Unionville
Culvers Gap	Branchville	Hamburg



PORT JERVIS SOUTH, NY-NJ-PA  
2013