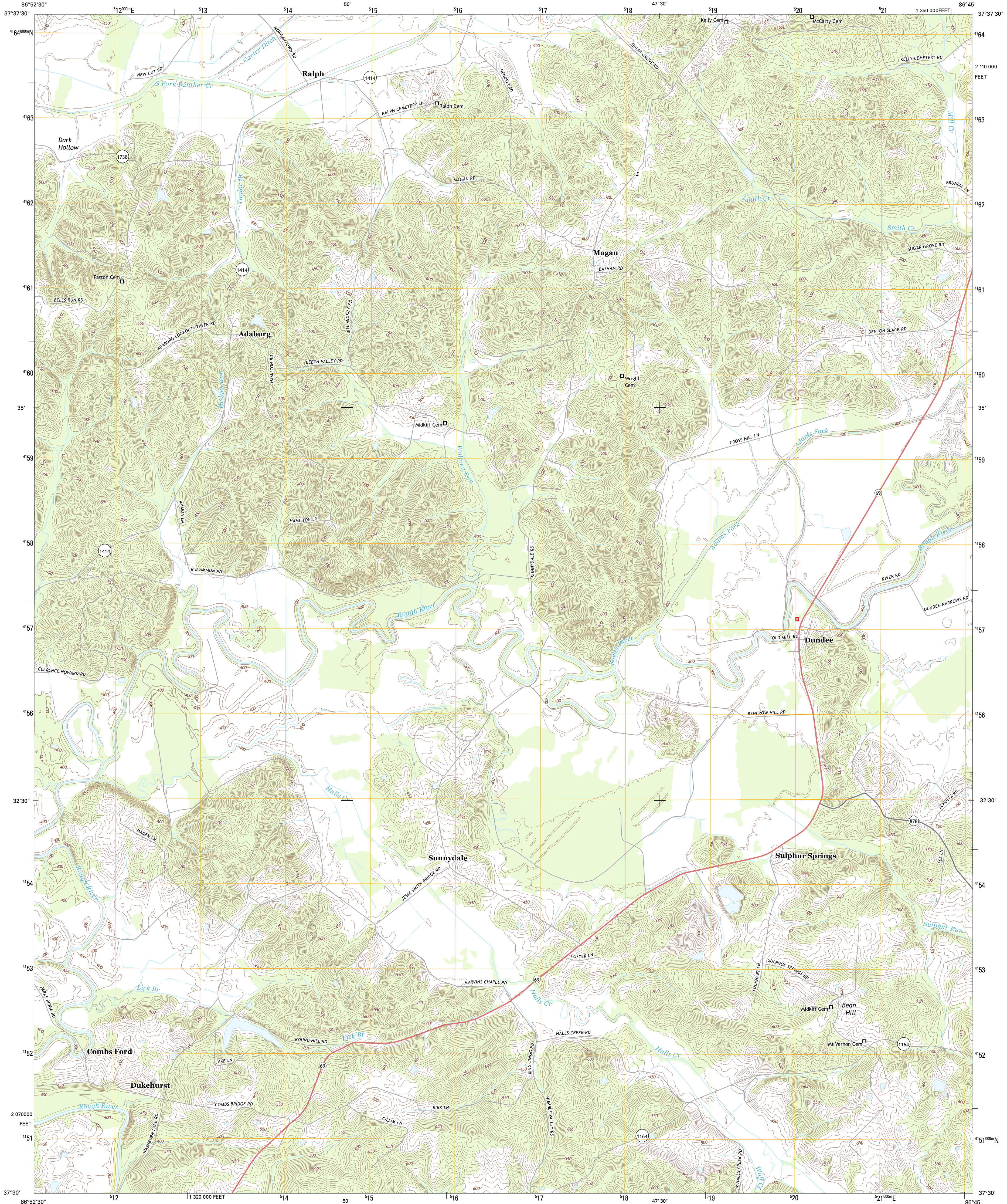




U.S. DEPARTMENT OF THE INTERIOR
U. S. GEOLOGICAL SURVEY

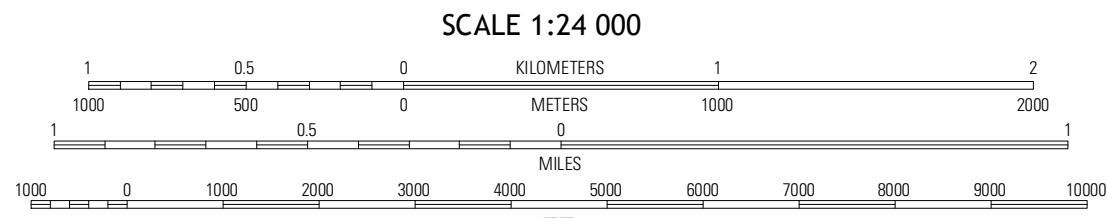
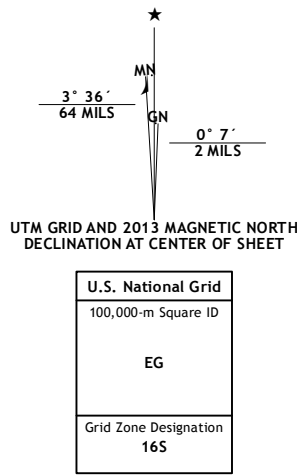


DUNDEE QUADRANGLE
KENTUCKY-OHIO CO.
7.5-MINUTE SERIES



Produced by the United States Geological Survey
North American Datum of 1983 (NAD83)
World Geodetic System of 1984 (WGS84). Projection and
10 000-foot ticks: Kentucky Coordinate System of 1983 (south
zone)

Imagery.....NAIP, June 2012
Roads.....©2006-2012 TomTom
Names.....GNIS, 2012
Hydrography.....National Hydrography Dataset, 2012
Contours.....National Elevation Dataset, 2002
Boundaries.....Census, IBWC, IBC, USGS, 1972-2012

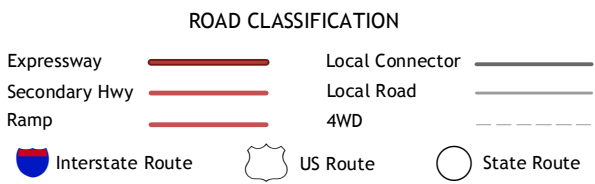


CONTOUR INTERVAL 10 FEET
NORTH AMERICAN VERTICAL DATUM OF 1988
This map was produced to conform with the
National Geospatial Program US Topo Product Standard, 2011.
A metadata file associated with this product is draft version 0.6.8



Philpot	Whitesville	Fordsville
Pleasant Ridge	Dundee	Olaton
Hartford	Horton	Rosine

ADJOINING 7.5 QUADRANGLES



DUNDEE, KY
2013