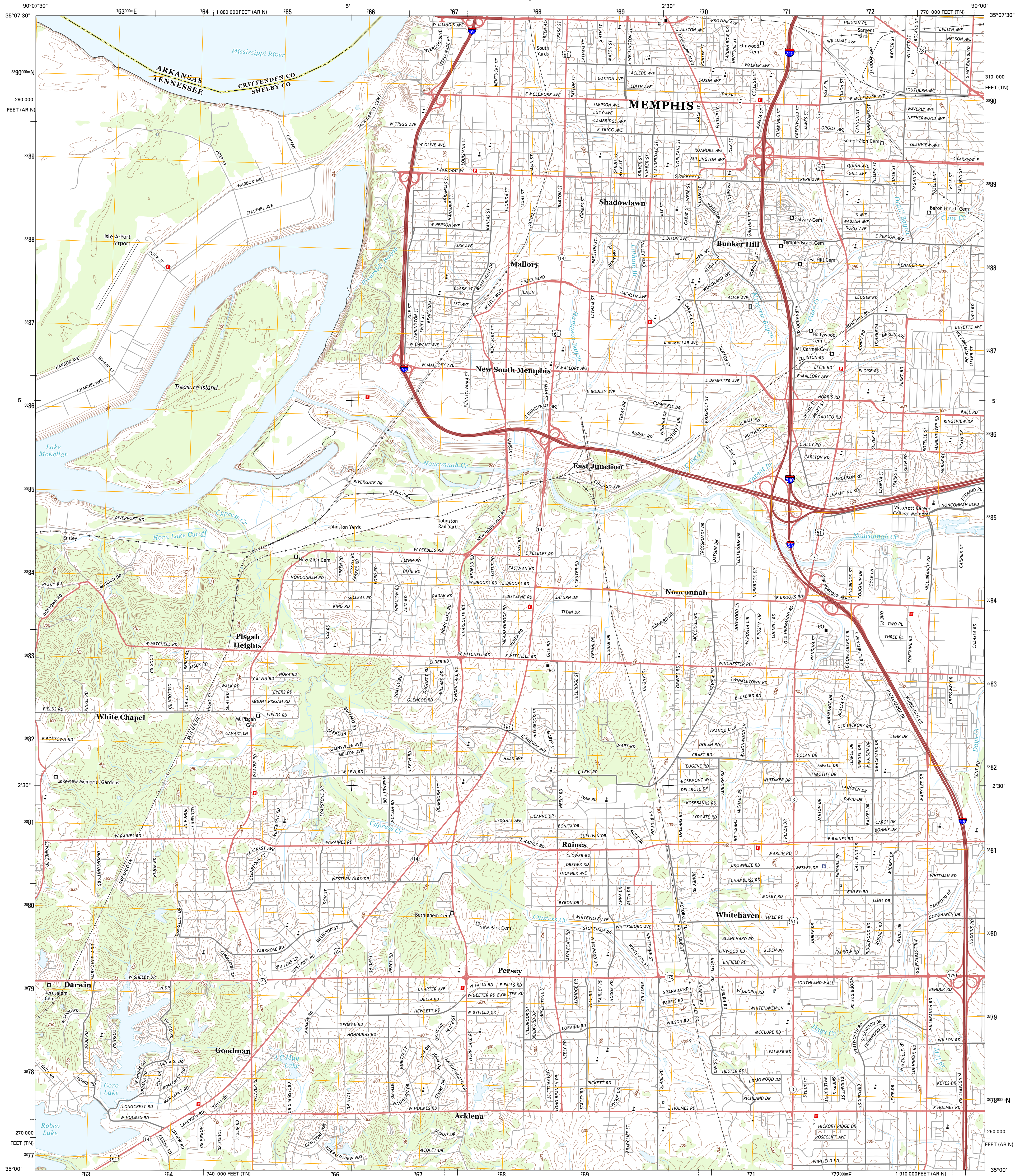




U.S. DEPARTMENT OF THE INTERIOR
U. S. GEOLOGICAL SURVEY



SOUTHWEST MEMPHIS QUADRANGLE
TENNESSEE-ARKANSAS
7.5-MINUTE SERIES

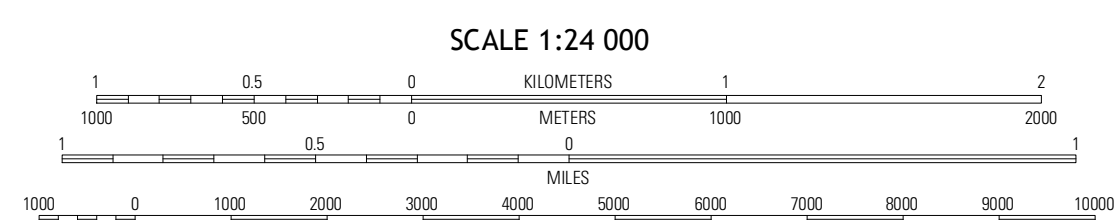


Produced by the United States Geological Survey
North American Datum of 1983 (NAD83)
World Geodetic System of 1984 (WGS84)
1 000-meter grid: Universal Transverse Mercator, Zone 15S
10 000-foot ticks: Tennessee Coordinate System of 1983,
Arkansas Coordinate System of 1983 (north zone)

Imagery.....NAIP, June 2012
Roads.....©2006-2012 TomTom
Names.....GNS, 2012
Hydrography.....National Hydrography Dataset, 2012
Contours.....National Elevation Dataset, 2001
Boundaries.....Census, IBW, IBC, USGS, 1972-2012

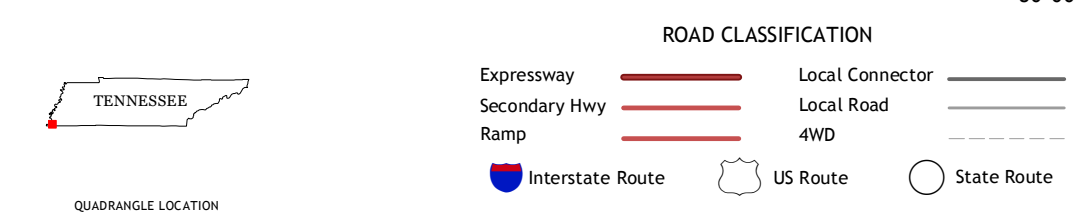
UTM GRID AND 2013 MAGNETIC NORTH
DECLINATION AT CENTER OF SHEET

U.S. National Grid
100,000-m Square ID
YU
Grid Zone Designation
15S



SCALE 1:24 000
CONTOUR INTERVAL 10 FEET
NORTH AMERICAN VERTICAL DATUM OF 1988

This map was produced to conform with the
National Geospatial Program US Topo Product Standard, 2011.
A metadata file associated with this product is draft version 0.6.11



QUADRANGLE LOCATION		
West Memphis	Northwest Memphis	Northeast Memphis
Pletcher Lake	Southwest Memphis	Southeast Memphis
Lake Cormorant	Horn Lake	Pleasant Hill

ADJOINING 7.5 QUADRANGLES

SOUTHWEST MEMPHIS, TN-AR
2013