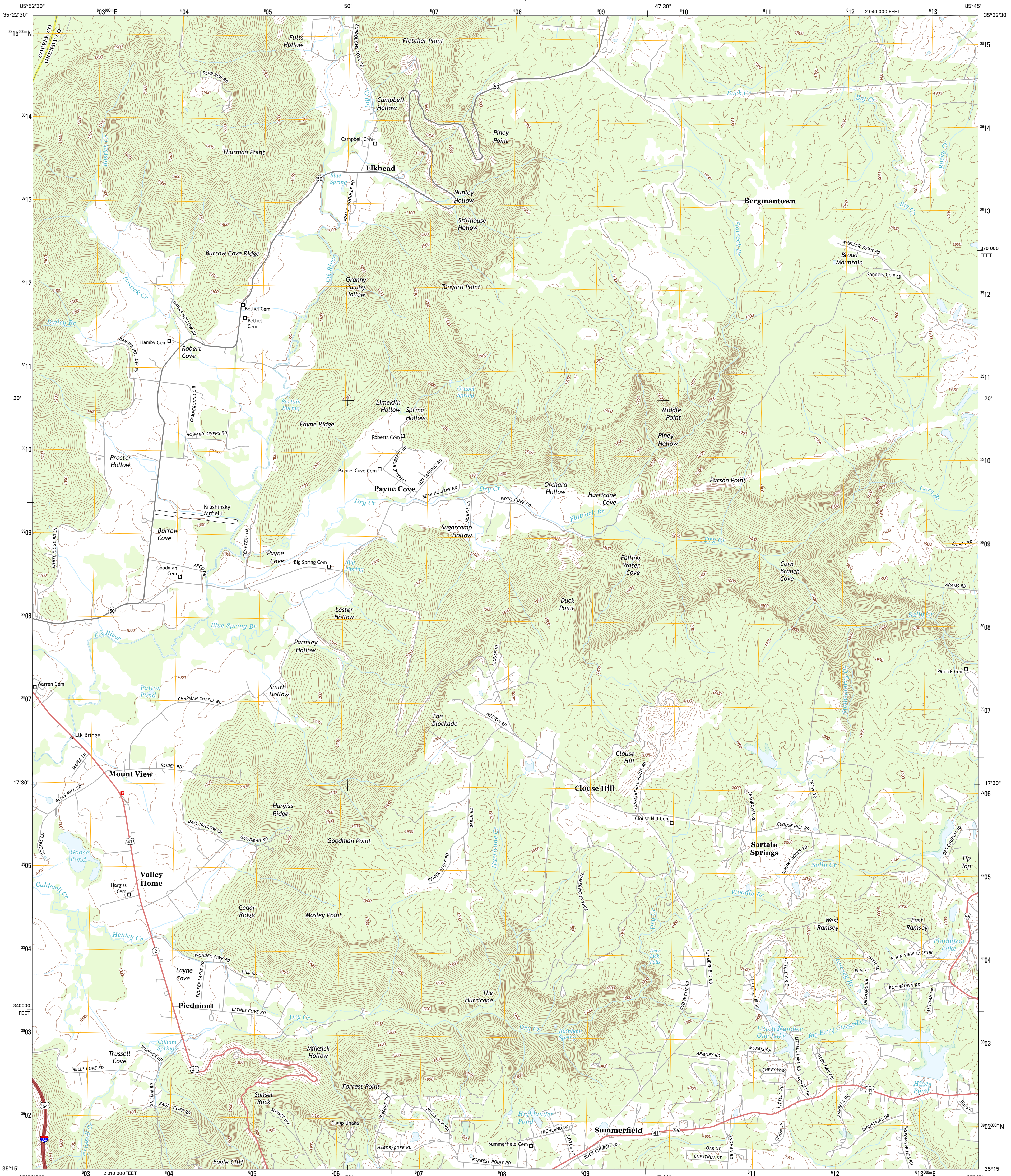




U.S. DEPARTMENT OF THE INTERIOR  
U. S. GEOLOGICAL SURVEY



BURROW COVE QUADRANGLE  
TENNESSEE  
7.5-MINUTE SERIES



Produced by the United States Geological Survey  
North American Datum of 1983 (NAD83)  
World Geodetic System of 1984 (WGS84) Projection and  
1 000-meter grid: Universal Transverse Mercator, Zone 16S  
10 000-foot ticks: Tennessee Coordinate System of 1983

Imagery.....NAIP, June 2012  
Roads.....©2006-2012 TomTom  
Names.....GNIS, 2012  
Hydrography.....National Hydrography Dataset, 2012  
Contours.....National Elevation Dataset, 2001  
Boundaries.....Census, IBWC, IBC, USGS, 1972 - 2012

UTM GRID AND 2013 MAGNETIC NORTH  
DECLINATION AT CENTER OF SHEET

3° 59' 71 MILS  
9° 41' 12 MILS

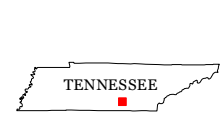
U.S. National Grid  
100,000-m Square ID  
FE  
Grid Zone Designation  
16S

SCALE 1:24 000

1 0.5 0 1 2  
1000 500 0 1000 2000  
KILOMETERS  
1 0.5 0 1 2  
1000 500 0 1000 2000  
METERS  
1 0 1000 2000 3000 4000 5000 6000 7000 8000 9000 10000  
FEET

CONTOUR INTERVAL 20 FEET  
NORTH AMERICAN VERTICAL DATUM OF 1988

This map was produced to conform with the  
National Geospatial Program US Topo Product Standard, 2011.  
A metadata file associated with this product is draft version 0.6.11



| QUADRANGLE LOCATION |             |            |
|---------------------|-------------|------------|
| Hillsboro           | Cane Hollow | Akamont    |
| Alto                | Burrow Cove | Tracy City |
| Sewanee             | Monteagle   | White City |

ROAD CLASSIFICATION

Expressway  
Secondary Hwy  
Ramp

Local Connector  
Local Road  
4WD

Interstate Route  
US Route  
State Route

BURROW COVE, TN  
2013