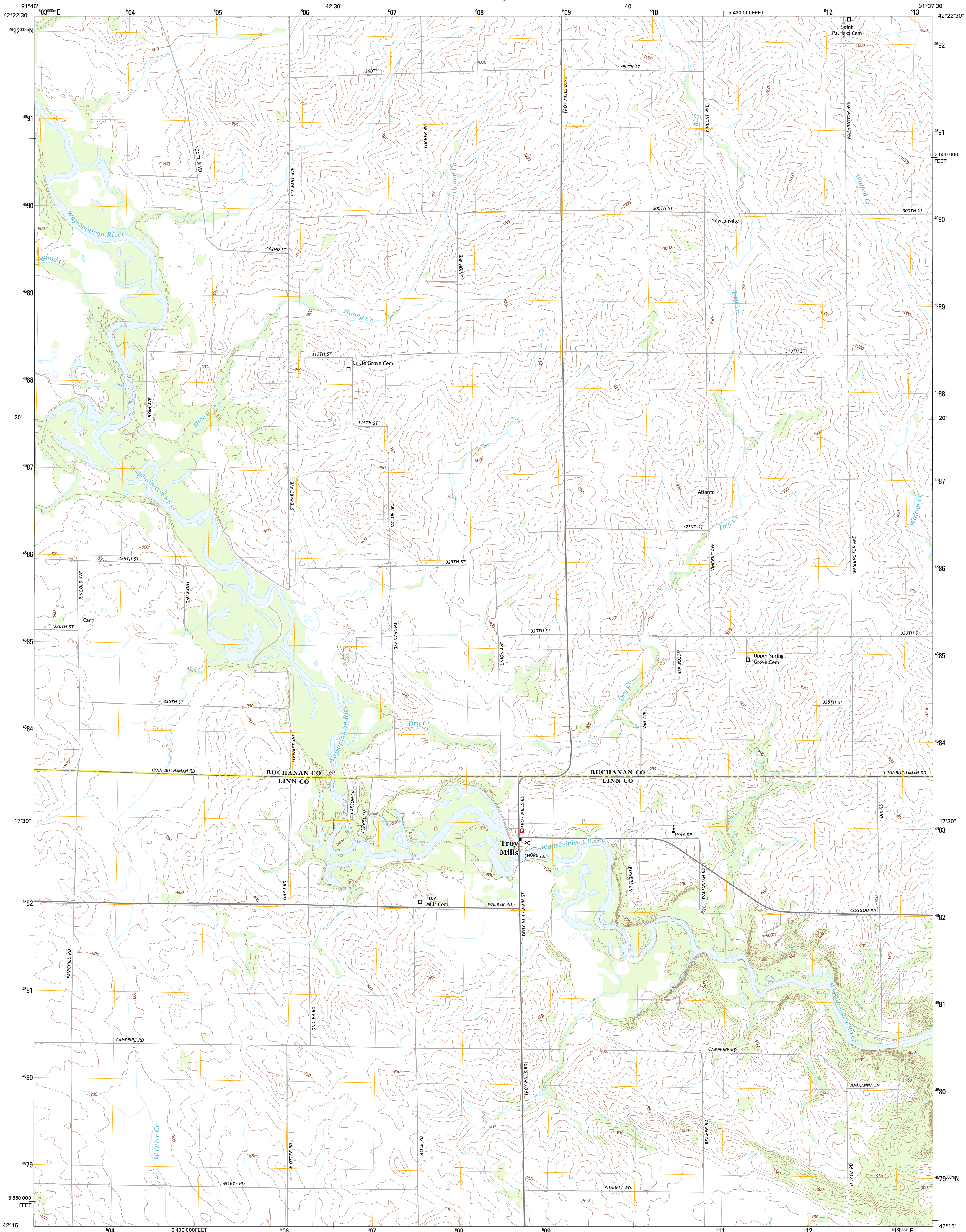




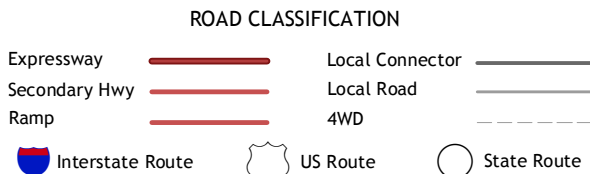
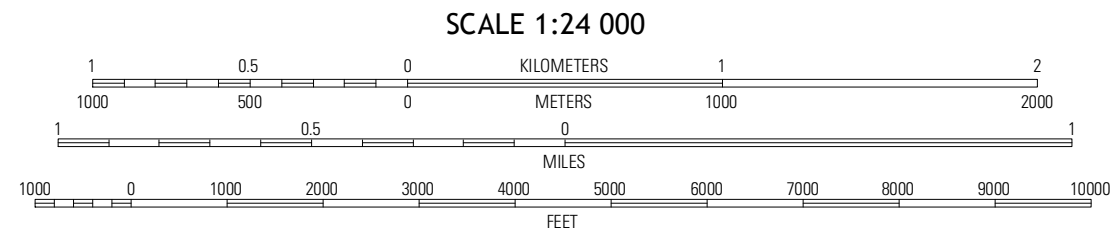
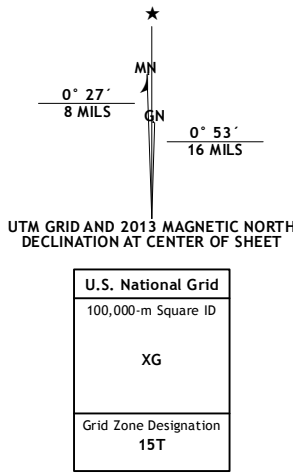
U.S. DEPARTMENT OF THE INTERIOR
U. S. GEOLOGICAL SURVEY



TROY MILLS QUADRANGLE
IOWA
7.5-MINUTE SERIES



Produced by the United States Geological Survey
North American Datum of 1983 (NAD83)
World Geodetic System of 1984 (WGS84). Projection and
1 000-meter grid: Universal Transverse Mercator, Zone 15T
10 000-foot ticks: Iowa Coordinate System of 1983 (north zone)



Quasqueton	Winthrop	Masonville
Walker	Troy Mills	Coggon
Center Point	Lafayette	Central City

TROY MILLS, IA
2013

ADJOINING 7.5 QUADRANGLES