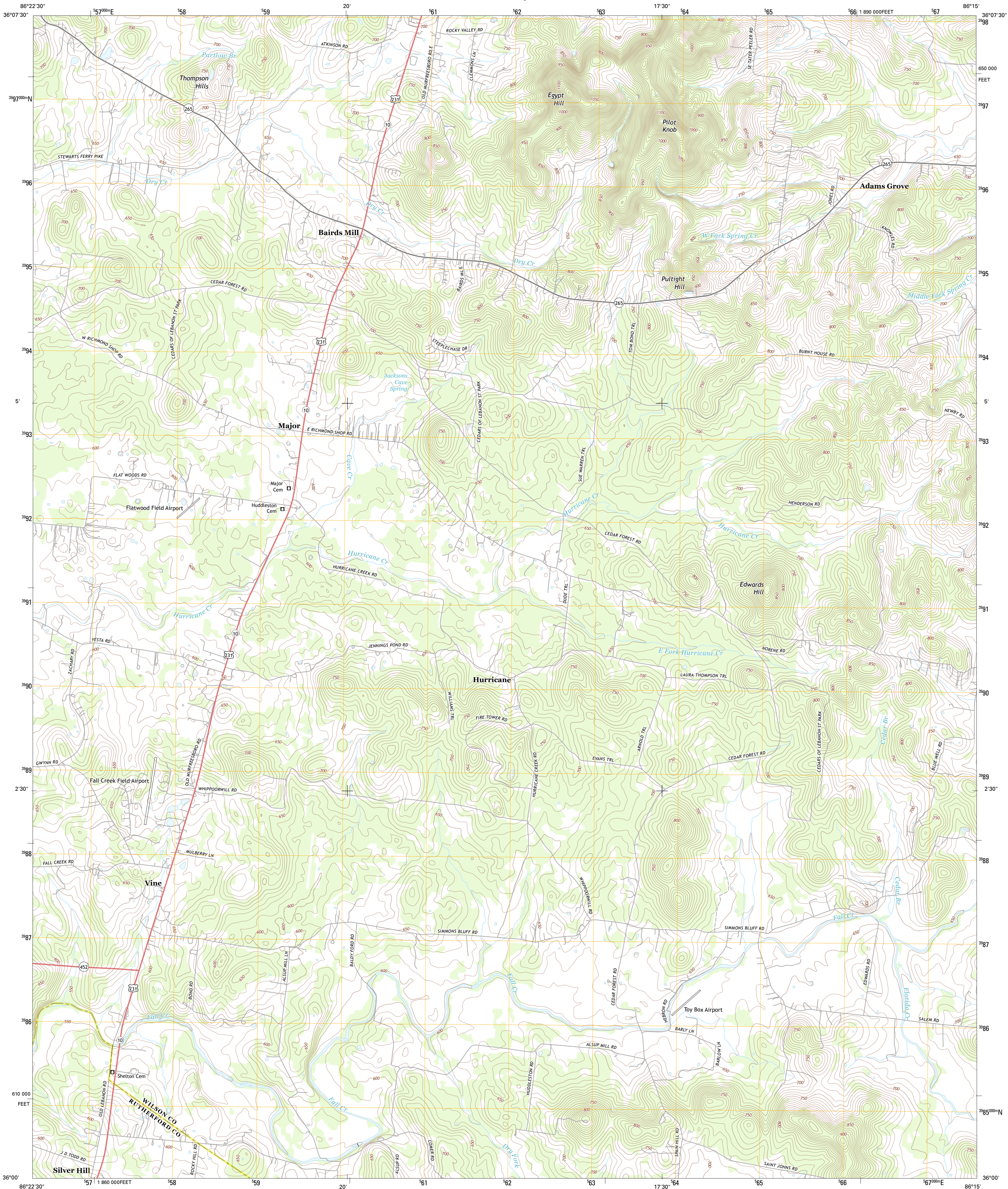




U.S. DEPARTMENT OF THE INTERIOR
U. S. GEOLOGICAL SURVEY



VINE QUADRANGLE
TENNESSEE
7.5-MINUTE SERIES



Produced by the United States Geological Survey
North American Datum of 1983 (NAD83)
World Geodetic System of 1984 (WGS84). Projection and
1 000-meter grid: Universal Transverse Mercator, Zone 16S
10 000-foot ticks: Tennessee Coordinate System of 1983

Imagery.....NAIP, June 2012
Roads.....©2006-2012, TomTom
Names.....GNIS, 2012
Hydrography.....National Hydrography Dataset, 2012
Contours.....National Elevation Dataset, 2000
Boundaries.....Census, IBC, USGS, 1972-2012

UTM GRID AND 2013 MAGNETIC NORTH
DECLINATION AT CENTER OF SHEET

U.S. National Grid
100,000 m Square ID
EE
Grid Zone Designation
16S

SCALE 1:24 000

1 000 0 0.5 1 2 KILOMETERS

1 000 0 500 1000 METERS

1 000 0 1000 2000 3000 4000 5000 6000 7000 8000 9000 10000 FEET

CONTOUR INTERVAL 10 FEET
NORTH AMERICAN VERTICAL DATUM OF 1988

This map was produced to conform with the
National Geospatial Program US Topo Product Standard, 2011.
A metadata file associated with this product is draft version 0.6.11



QUADRANGLE LOCATION		
Martha	Lebanon	Shop Springs
Gladeville	Vine	Watertown
Walterhill	Lancaster	Milton

ADJOINING 7.5' QUADRANGLES

ROAD CLASSIFICATION

Expressway
Secondary Hwy
Ramp

Local Connector
Local Road
4WD

Interstate Route
US Route
State Route

VINE, TN
2013