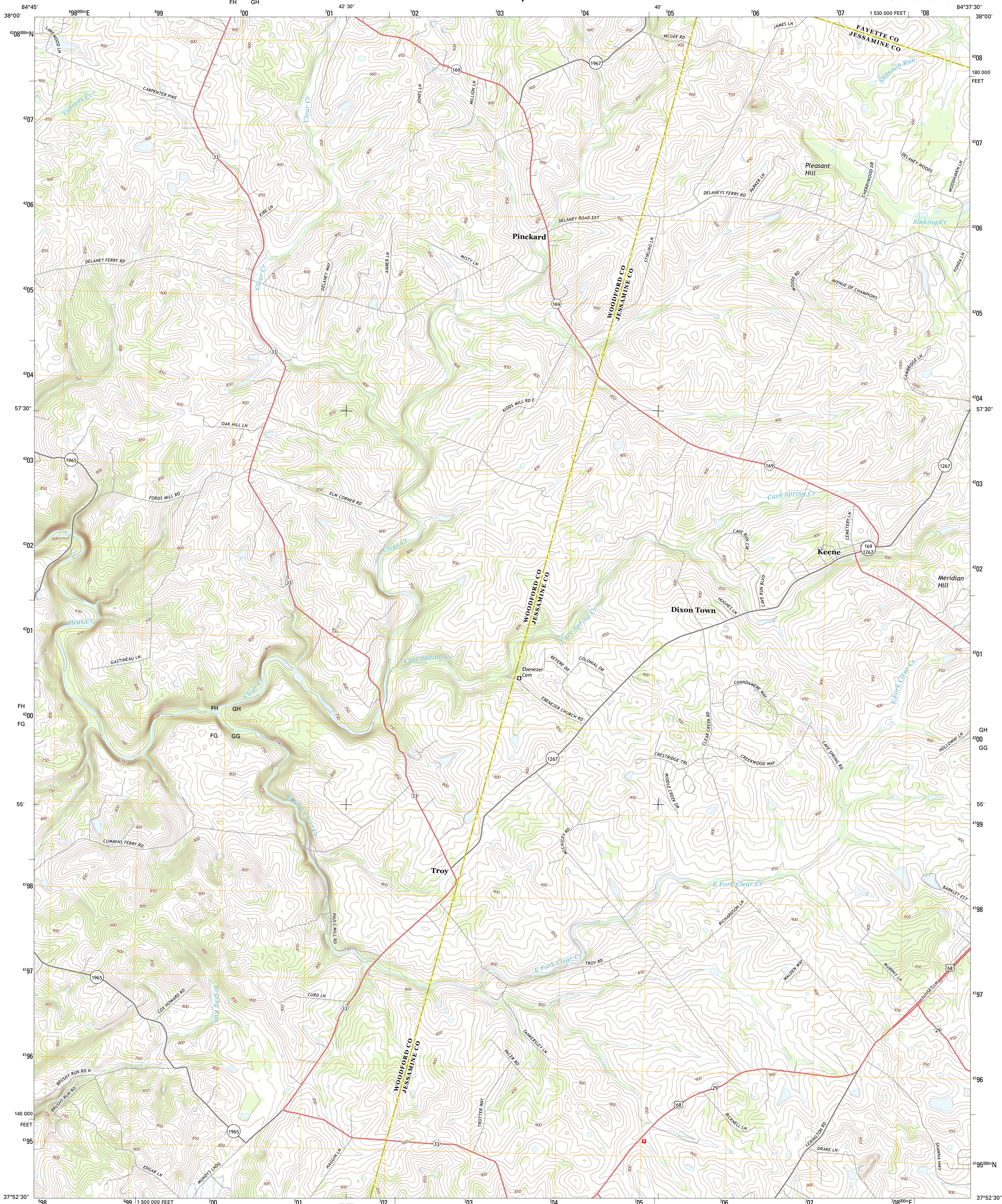




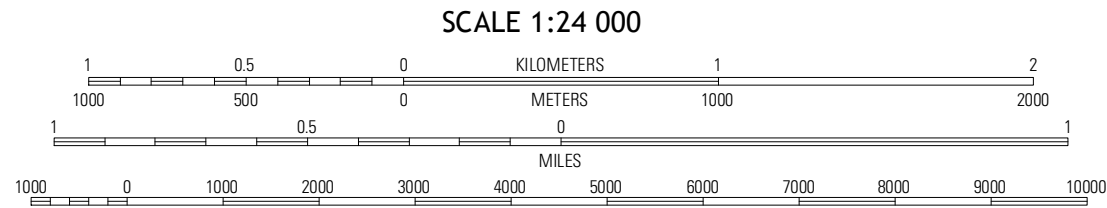
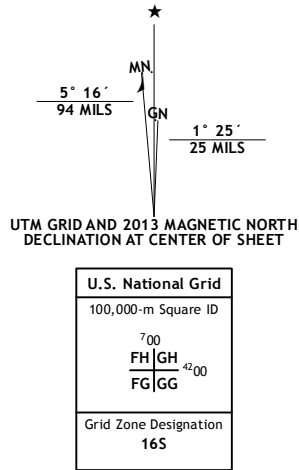
U.S. DEPARTMENT OF THE INTERIOR  
U. S. GEOLOGICAL SURVEY



KEENE QUADRANGLE  
KENTUCKY  
7.5-MINUTE SERIES



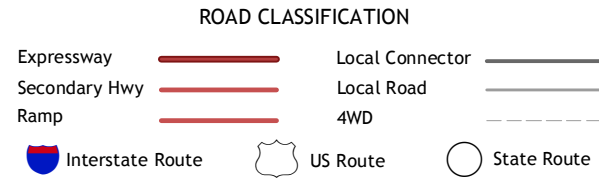
Produced by the United States Geological Survey  
North American Datum of 1983 (NAD83)  
Roads.....©2006-2012 TomTom  
Names.....GNSS, 2012  
Hydrography.....National Hydrography Dataset, 2012  
Contours.....National Elevation Dataset, 2002  
Boundaries.....Census, IBG, USGS, 1972-2012



CONTOUR INTERVAL 10 FEET  
NORTH AMERICAN VERTICAL DATUM OF 1988  
This map was produced to conform with the  
National Geospatial Program US Topo Product Standard, 2011.  
A metadata file associated with this product is draft version 0.6.11



Tyrone	Versailles	Lexington West
Salvia	Keene	Nicholasville
Harrodsburg	Wilmore	Little Hickman



KEENE, KY  
2013