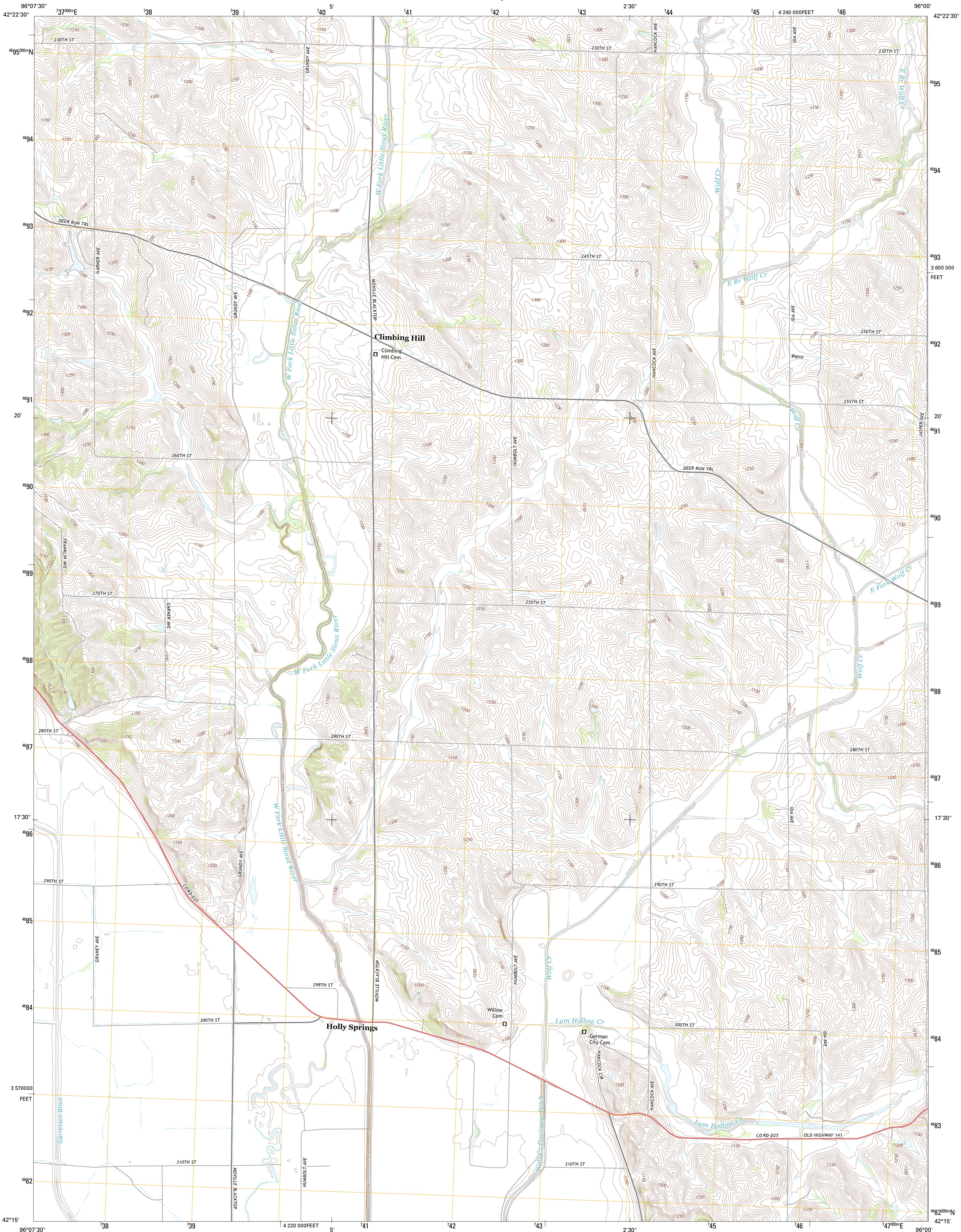




U.S. DEPARTMENT OF THE INTERIOR
U. S. GEOLOGICAL SURVEY

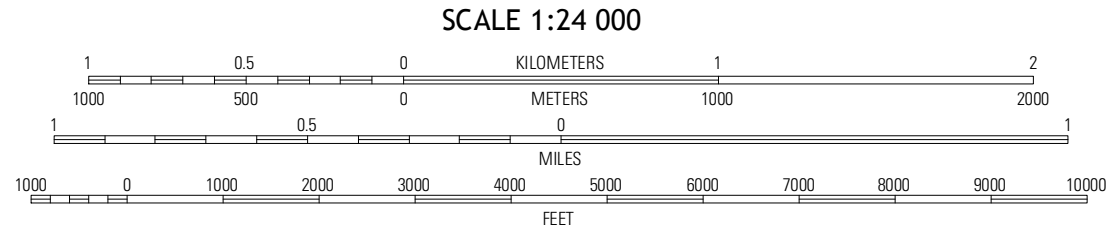
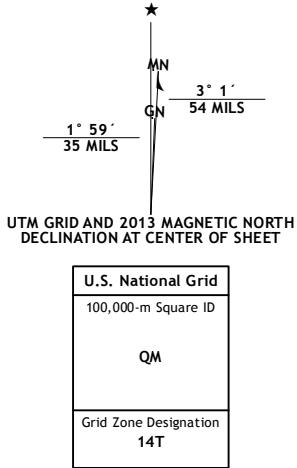


CLIMBING HILL QUADRANGLE
IOWA-WOODBURY CO.
7.5-MINUTE SERIES

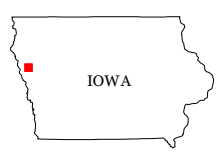


Produced by the United States Geological Survey
North American Datum of 1983 (NAD83)
World Geodetic System of 1984 (WGS84). Projection and
1 000 meter grid: Universal Transverse Mercator, Zone 14T
10 000-foot ticks: Iowa Coordinate System of 1983 (north zone)

Imagery.....NAIP, August 2011
Roads.....©2006-2012 TomTom
Names.....GNIS, 2012
Hydrography.....National Hydrography Dataset, 2011
Contours.....National Elevation Dataset, 2005
Boundaries.....Census, IBC, IBC, USGS, 1972 - 2012

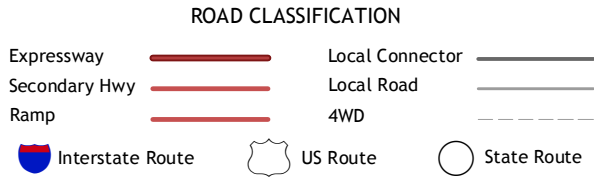


CONTOUR INTERVAL 10 FEET
NORTH AMERICAN VERTICAL DATUM OF 1988
This map was produced to conform with the
National Geospatial Program US Topo Product Standard, 2011.
A metadata file associated with this product is draft version 0.6.11



Lawton	Mobile	Corvallis
Luton	Climbing Hill	Oto
Sloun	Hornick	Smithland

ADJOINING 7.5 QUADRANGLES



CLIMBING HILL, IA
2013