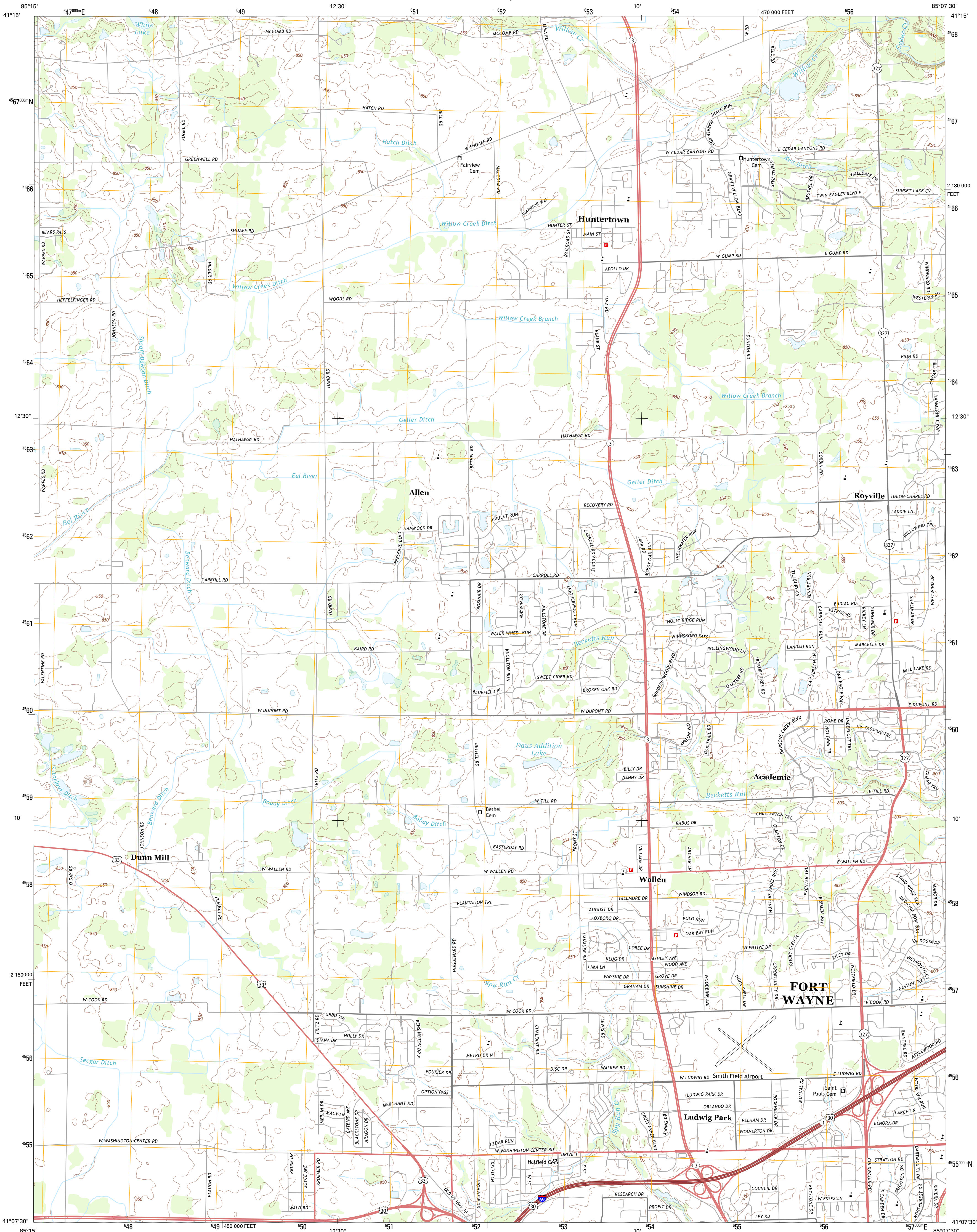




U.S. DEPARTMENT OF THE INTERIOR
U. S. GEOLOGICAL SURVEY



HUNTERTOWN QUADRANGLE
INDIANA-ALLEN CO.
7.5-MINUTE SERIES

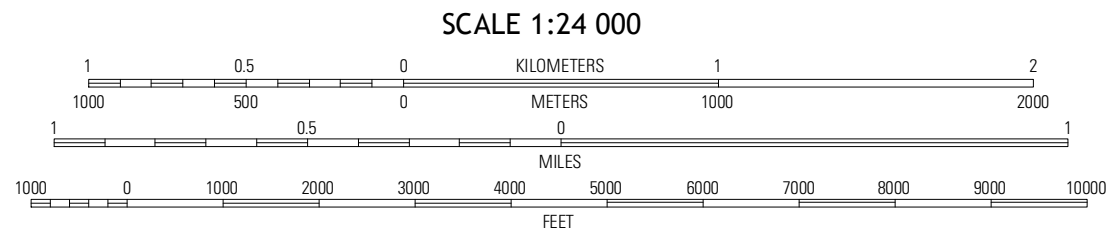


Produced by the United States Geological Survey
North American Datum of 1983 (NAD83)
World Geodetic System of 1984 (WGS84). Projection and
1 000-meter grid: Universal Transverse Mercator, Zone 16T
10 000-foot ticks: Indiana Coordinate System of 1983 (east zone)

Imagery.....NAIP, June 2012
Roads.....©2006-2012 TomTom
Names.....GNS, 2012
Hydrography.....National Hydrography Dataset, 2012
Contours.....National Elevation Dataset, 2011
Boundaries.....Census, IBWC, IBC, USGS, 1972 - 2012

UTM GRID AND 2013 MAGNETIC NORTH
DECLINATION AT CENTER OF SHEET

U.S. National Grid
100,000-m Square ID
FL
Grid Zone Designation
16T



SCALE 1:24 000

CONTOUR INTERVAL 10 FEET
NORTH AMERICAN VERTICAL DATUM OF 1988

This map was produced to conform with the
National Geospatial Program US Topo Product Standard, 2011.
A metadata file associated with this product is draft version 0.6.11



ADJOINING 7.5 QUADRANGLES		
Rye	Garrett	Asburn
Chubbuck	Huntertown	Cedarville
Arcola	Fort Wayne West	Fort Wayne East

ROAD CLASSIFICATION	
Expressway	Local Connector
Secondary Hwy	Local Road
Ramp	4WD
Interstate Route	US Route
	State Route

HUNTERTOWN, IN
2013