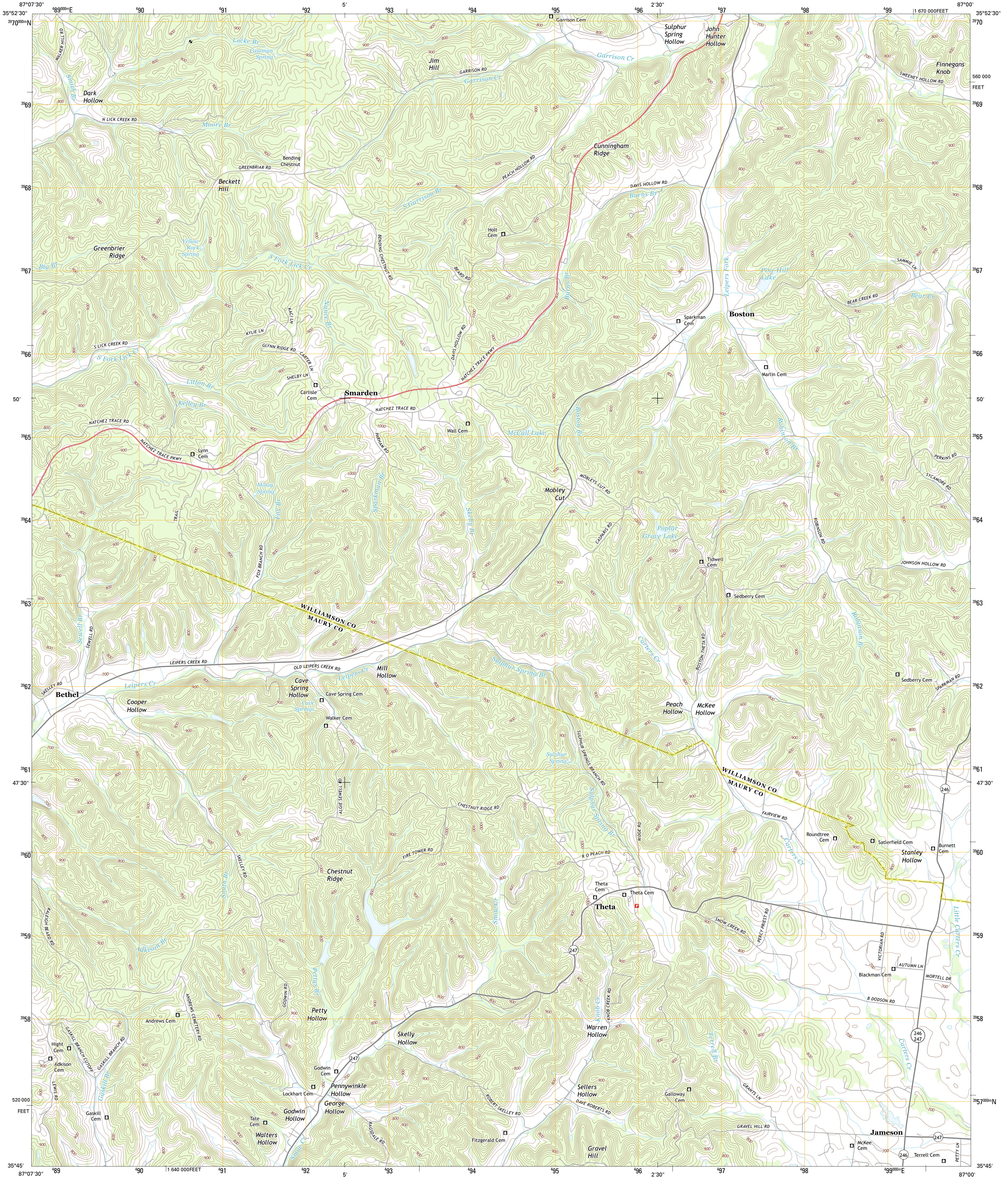




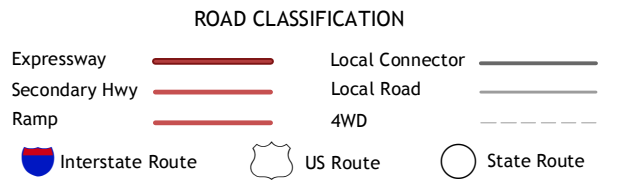
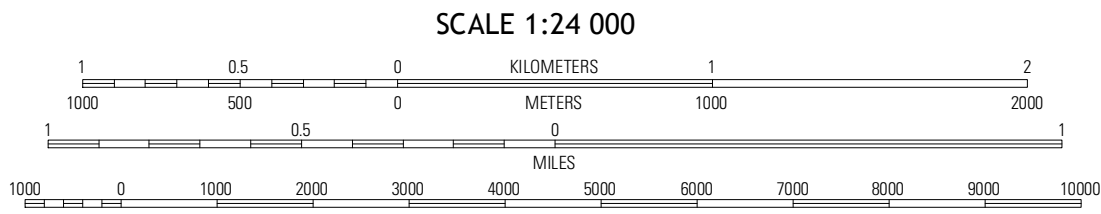
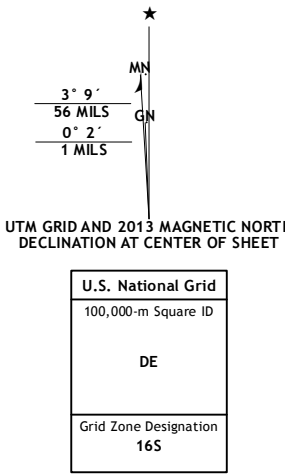
U.S. DEPARTMENT OF THE INTERIOR  
U. S. GEOLOGICAL SURVEY



THETA QUADRANGLE  
TENNESSEE  
7.5-MINUTE SERIES



Produced by the United States Geological Survey  
North American Datum of 1983 (NAD83)  
World Geodetic System of 1984 (WGS84). Projection and  
1 000-meter grid: Universal Transverse Mercator, Zone 16S  
10 000-foot ticks: Tennessee Coordinate System of 1983



QUADRANGLE LOCATION		
Craigfield	Fairview	Leipers Fork
Primm Springs	Theta	Spring Hill
Williamsport	Godwin	Carters Creek

THETA, TN  
2013