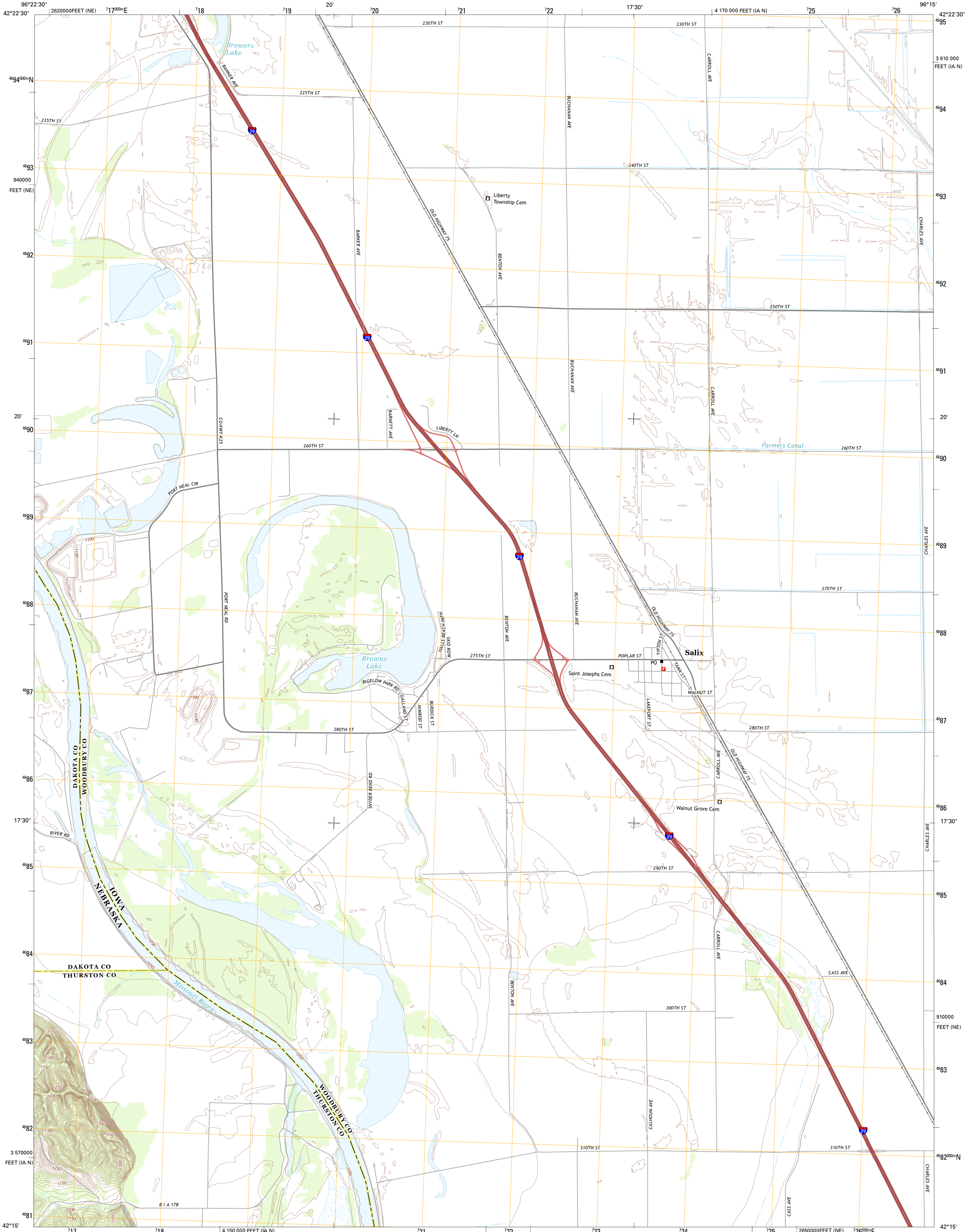




U.S. DEPARTMENT OF THE INTERIOR  
U. S. GEOLOGICAL SURVEY

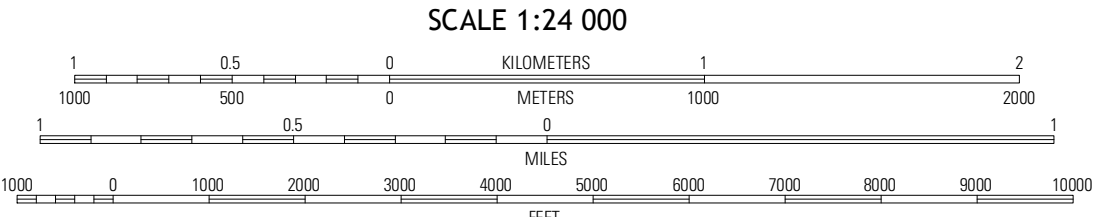
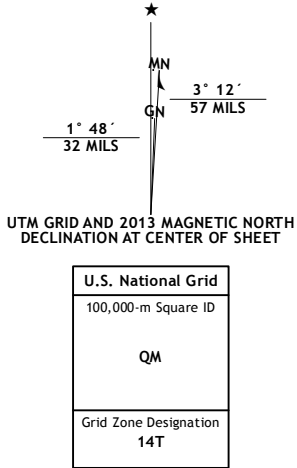


SALIX QUADRANGLE  
IOWA-NEBRASKA  
7.5-MINUTE SERIES



Produced by the United States Geological Survey  
North American Datum of 1983 (NAD83)  
World Geodetic System of 1984 (WGS84). Projection and  
1 000-meter grid: Universal Transverse Mercator, Zone 14T  
10 000-foot ticks: Iowa Coordinate System of 1983 (north zone),  
Nebraska Coordinate System of 1983

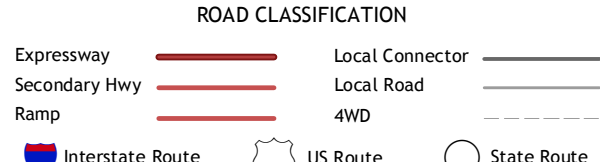
Imagery.....NAIP, August 2011 - July 2012  
Roads.....©2006-2012 TomTom  
Names.....GNIS, 2012  
Hydrography.....National Hydrography Dataset, 2011  
Contours.....National Elevation Dataset, 1999  
Boundaries.....Census, IBWC, IBC, USGS, 1972 - 2012



CONTOUR INTERVAL 10 FEET  
NORTH AMERICAN VERTICAL DATUM OF 1988  
This map was produced to conform with the  
National Geospatial Program US Topo Product Standard, 2011.  
A metadata file associated with this product is draft version 0.6.11



|                  |                |        |
|------------------|----------------|--------|
| Sioux City South | Sergeant Bluff | Lawton |
| Homer            | Salix          | Luton  |
| Walshill         | Albion         | Sloan  |



SALIX, IA-NE  
2013

ADJOINING 7.5 QUADRANGLES