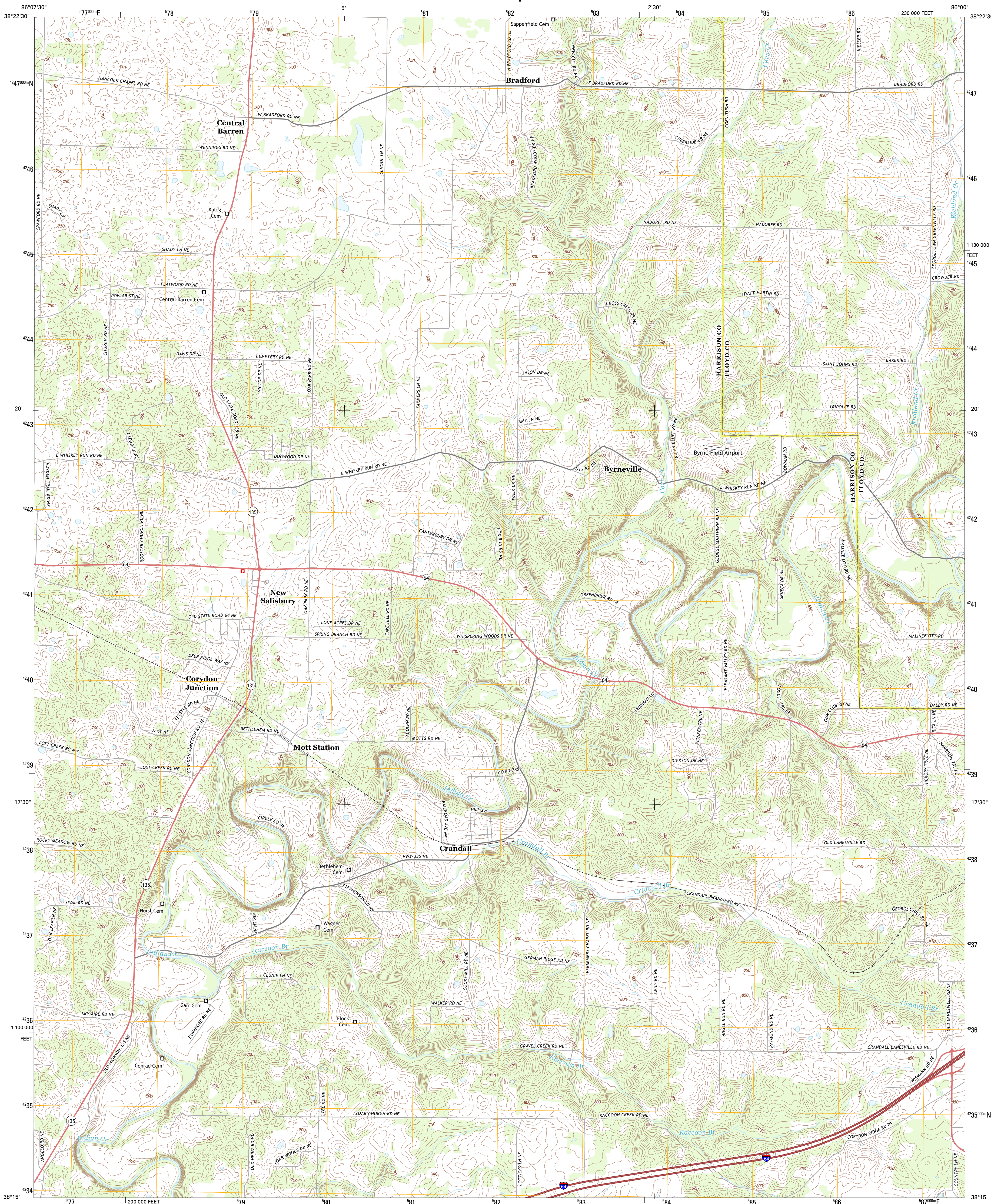




U.S. DEPARTMENT OF THE INTERIOR  
U. S. GEOLOGICAL SURVEY



CRANDALL QUADRANGLE  
INDIANA  
7.5-MINUTE SERIES



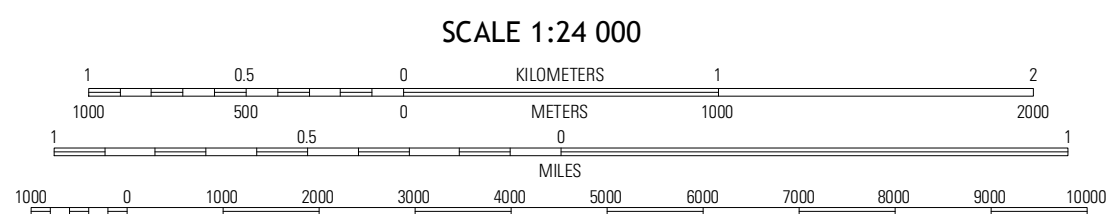
Produced by the United States Geological Survey  
North American Datum of 1983 (NAD83)  
World Geodetic System of 1984 (WGS84). Projection and  
1 000-meter grid: Universal Transverse Mercator, Zone 16S  
10 000-foot ticks: Indiana Coordinate System of 1983 (east zone)

Imagery.....NAIP, June 2012  
Roads.....©2006-2012, TomTom  
Names.....GNIS, 2012  
Hydrography.....National Hydrography Dataset, 2012  
Contours.....National Elevation Dataset, 2004  
Boundaries.....Census, IBWC, IBC, USGS, 1972 - 2012

UTM GRID AND 2013 MAGNETIC NORTH  
DECLINATION AT CENTER OF SHEET

4' 18" N  
76 MILS  
GN  
8' 15" N  
TO MILS

U.S. National Grid  
100,000-m Square ID  
EH  
Grid Zone Designation  
16S



CONTOUR INTERVAL 10 FEET  
NORTH AMERICAN VERTICAL DATUM OF 1988

This map was produced to conform with the  
National Geospatial Program US Topo Product Standard, 2011.  
A metadata file associated with this product is draft version 0.6.11



Frederickburg	Palmyra	Borden
Depauw	Crandall	Georgetown
Corydon West	Corydon East	Lanesville

ADJOINING 7.5 QUADRANGLES

ROAD CLASSIFICATION

Expressway  
Secondary Hwy  
Ramp

Local Connector  
Local Road  
4WD

Interstate Route  
US Route  
State Route

CRANDALL, IN  
2013