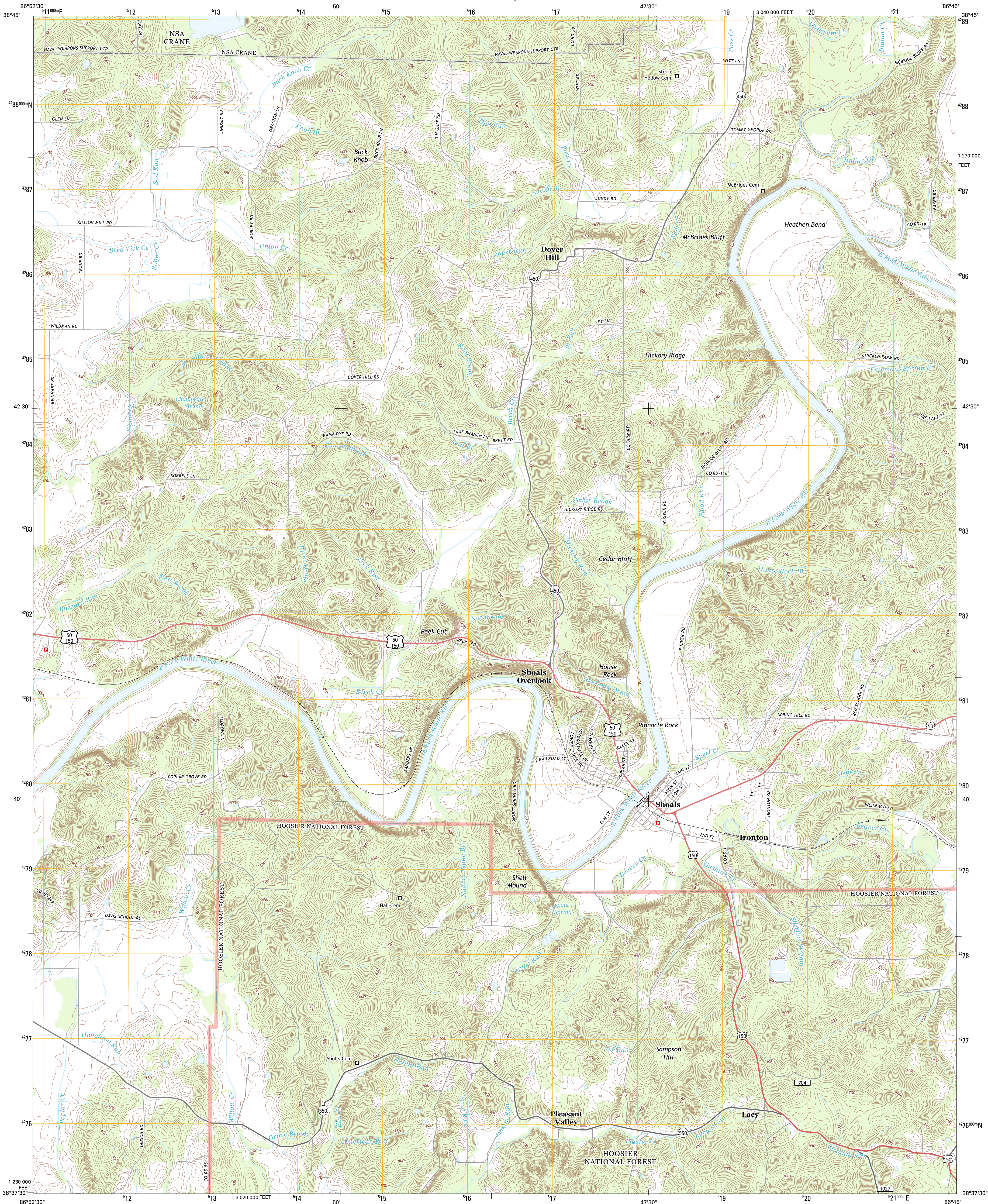




U.S. DEPARTMENT OF THE INTERIOR  
U. S. GEOLOGICAL SURVEY

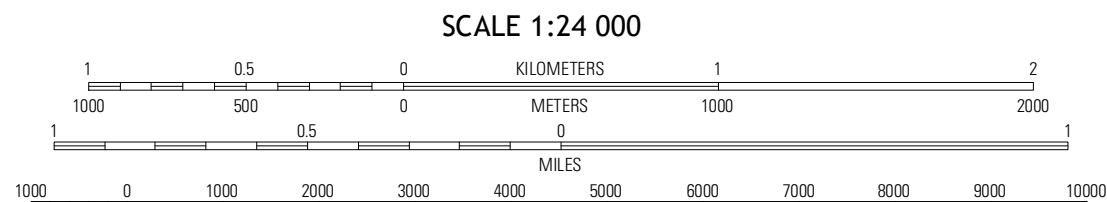
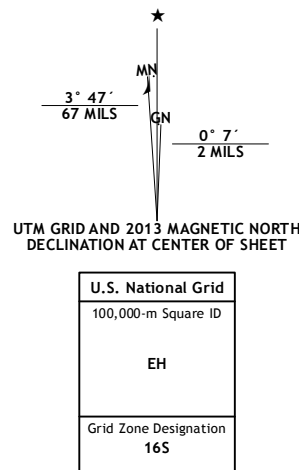


SHOALS QUADRANGLE  
INDIANA-MARTIN CO.  
7.5-MINUTE SERIES



Produced by the United States Geological Survey  
North American Datum of 1983 (NAD83)  
World Geodetic System of 1984 (WGS84). Projection and  
1 000-meter grid: Universal Transverse Mercator, Zone 16S  
10 000-foot ticks: Indiana Coordinate System of 1983 (west  
zone)

Imagery.....NAIP, June 2012  
Roads.....©2006-2012, TomTom  
Roads within US Forest Service Lands.....FS Topo Data  
with limited Forest Service updates, 2012  
Names.....©2012, GNSS, 2012  
Hydrography.....National Hydrography Dataset, 2012  
Contours.....National Elevation Dataset, 2000  
Boundaries.....Census, IBWC, IBC, USGS, 1972 - 2012



CONTOUR INTERVAL 10 FEET  
NORTH AMERICAN VERTICAL DATUM OF 1988  
This map was produced to conform with the  
National Geospatial Program US Topo Product Standard, 2011.  
A metadata file associated with this product is draft version 0.6.11



Odion	Indian Springs	Williams
Loonokee	Shoals	Huron
Alfordville	Runk	Hillman

ROAD CLASSIFICATION  
Expressway  
Secondary Hwy  
Ramp  
Interstate Route  
US Route  
FS Passenger Route  
Local Connector  
Local Road  
4WD  
FS High Clearance Route  
Check with local Forest Service unit  
for current travel conditions and restrictions.

SHOALS, IN  
2013