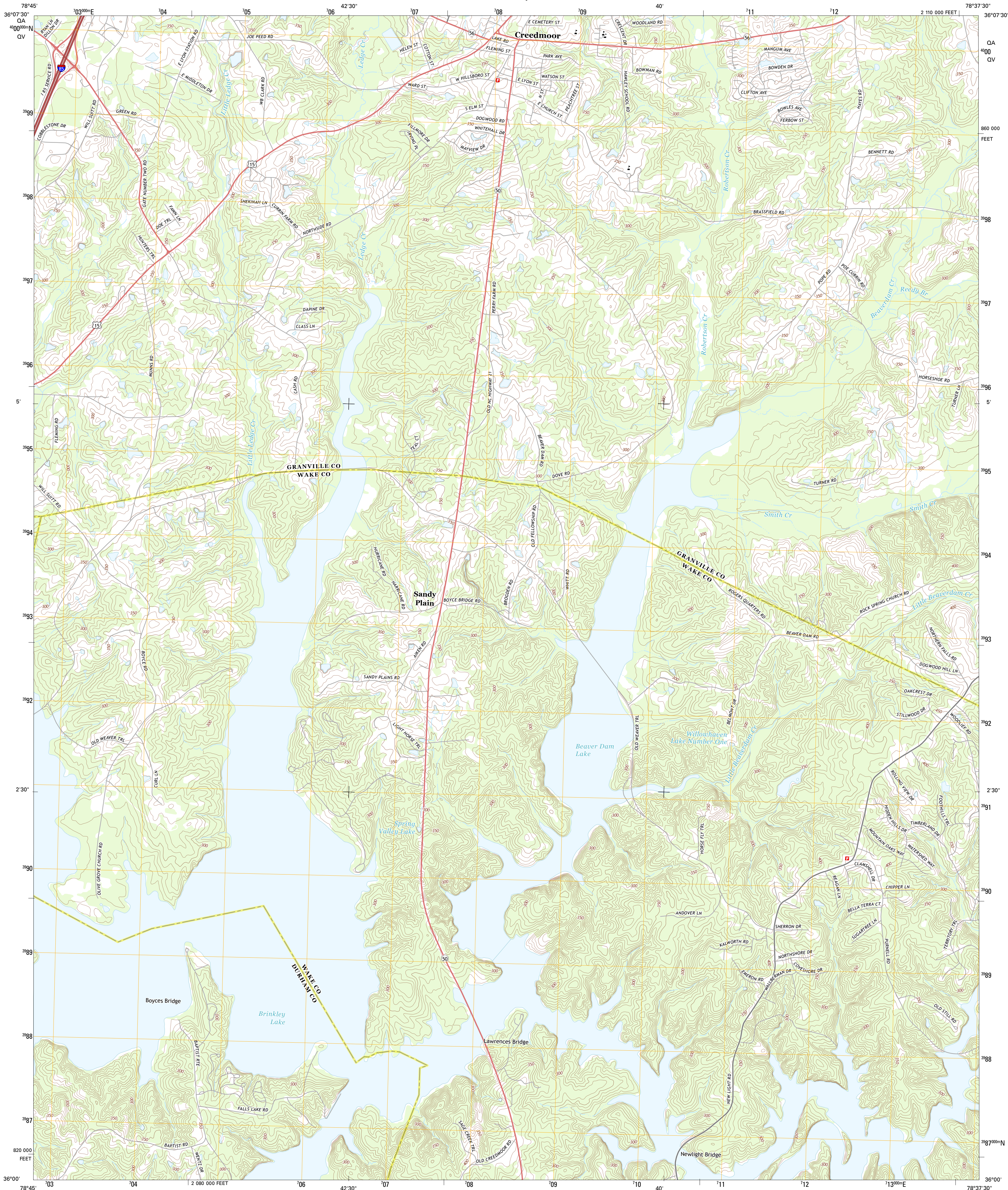




U.S. DEPARTMENT OF THE INTERIOR
U. S. GEOLOGICAL SURVEY

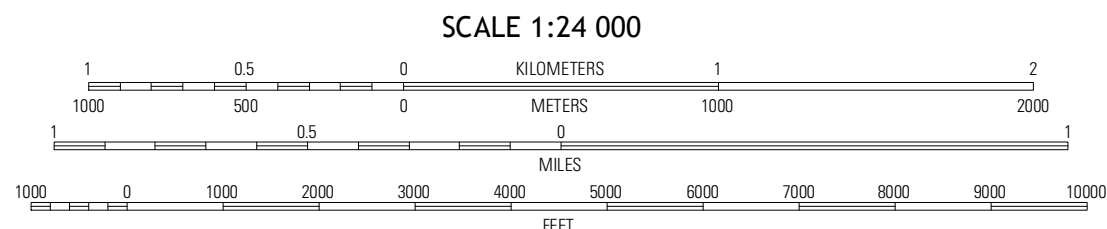
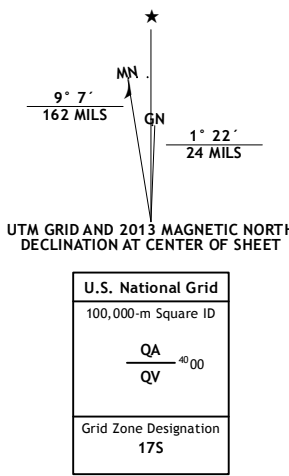


CREEDMOOR QUADRANGLE
NORTH CAROLINA
7.5-MINUTE SERIES



Produced by the United States Geological Survey
North American Datum of 1983 (NAD83)
World Geodetic System of 1984 (WGS84). Projection and
1 000-meter grid: Universal Transverse Mercator, Zone 17S
10 000-foot ticks: North Carolina Coordinate System of 1983

Imagery.....NAIP, May 2012
Roads.....©2006-2012, TomTom
Names.....GNSS, 2012
Hydrography.....National Hydrography Dataset, 2012
Contours.....National Elevation Dataset, 2008
Boundaries.....Census, IBWC, IBC, USGS, 1972 - 2012



CONTOUR INTERVAL 10 FEET
NORTH AMERICAN VERTICAL DATUM OF 1988
This map was produced to conform with the
National Geospatial Program US Topo Product Standard, 2011.
A metadata file associated with this product is draft version 0.6.11



QUADRANGLE LOCATION		
Lake Michie	Stem	Wilton
Northeast Durham	Creedmoor	Grissom
Southeast Durham	Bayleaf	Wake Forest

ROAD CLASSIFICATION		
Expressway	Local Connector	
Secondary Hwy	Local Road	
Ramp	4WD	
Interstate Route	US Route	State Route

CREEDMOOR, NC
2013