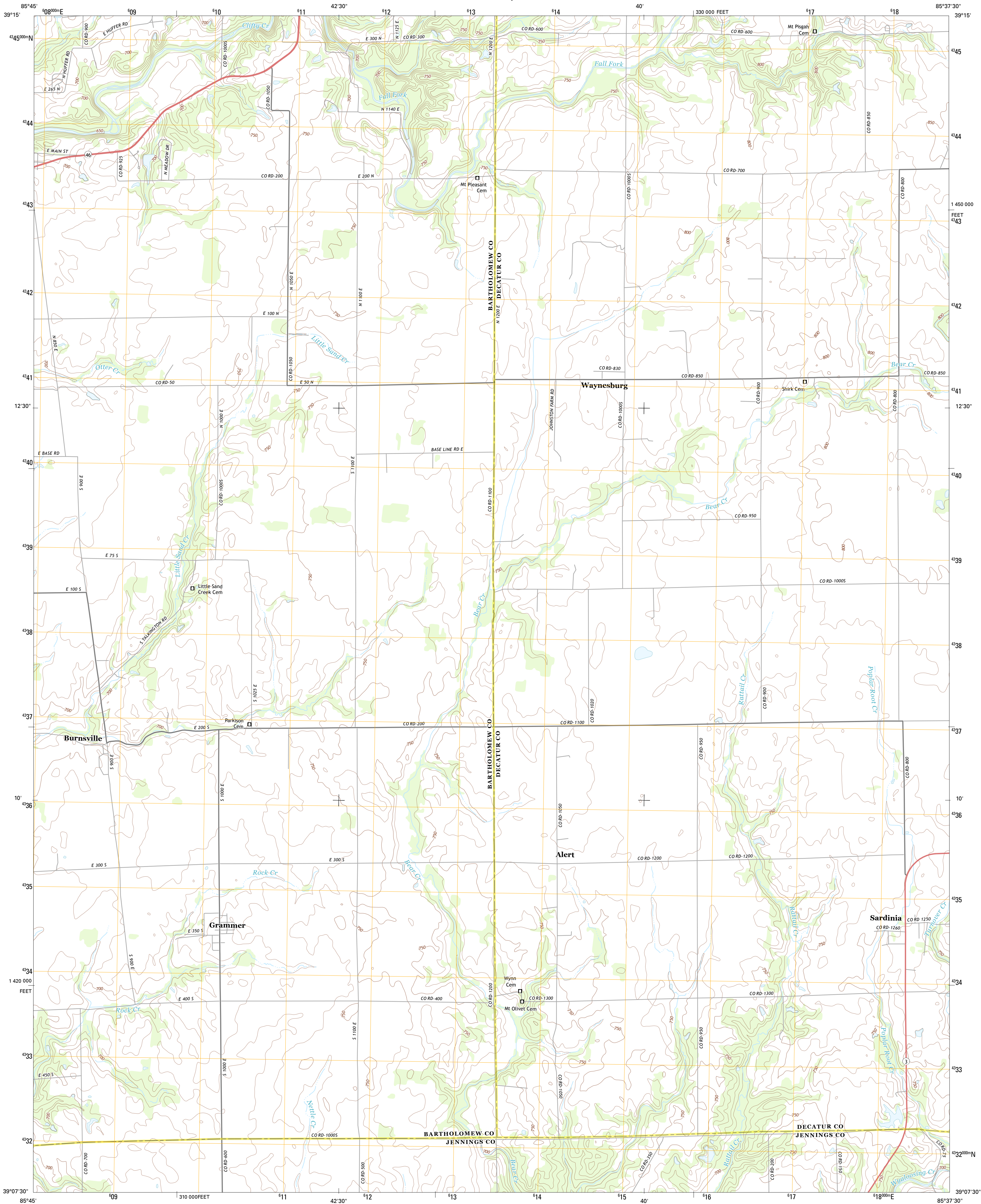




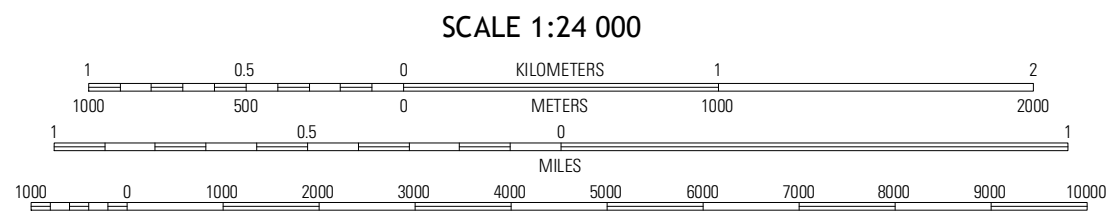
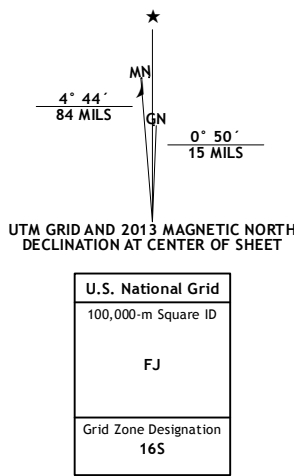
U.S. DEPARTMENT OF THE INTERIOR
U. S. GEOLOGICAL SURVEY



GRAMMER QUADRANGLE
INDIANA
7.5-MINUTE SERIES



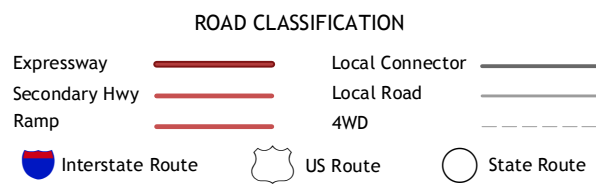
Produced by the United States Geological Survey
North American Datum of 1983 (NAD83)
Roads:..... ©2006-2012, TomTom
Names:..... GNS, 2012
Hydrography:..... National Hydrography Dataset, 2012
Contours:..... National Elevation Dataset, 2004
Boundaries:..... Census, IDW, IBC, USGS, 1972-2012



CONTOUR INTERVAL 10 FEET
NORTH AMERICAN VERTICAL DATUM OF 1988
This map was produced to conform with the
National Geospatial Program US Topo Product Standard, 2011.
A metadata file associated with this product is draft version 0.6.11



Hope	Hartsville	Forest Hill
Elizabethtown	Grammer	Westport
Anna	North Vernon	Butterville



GRAMMER, IN
2013