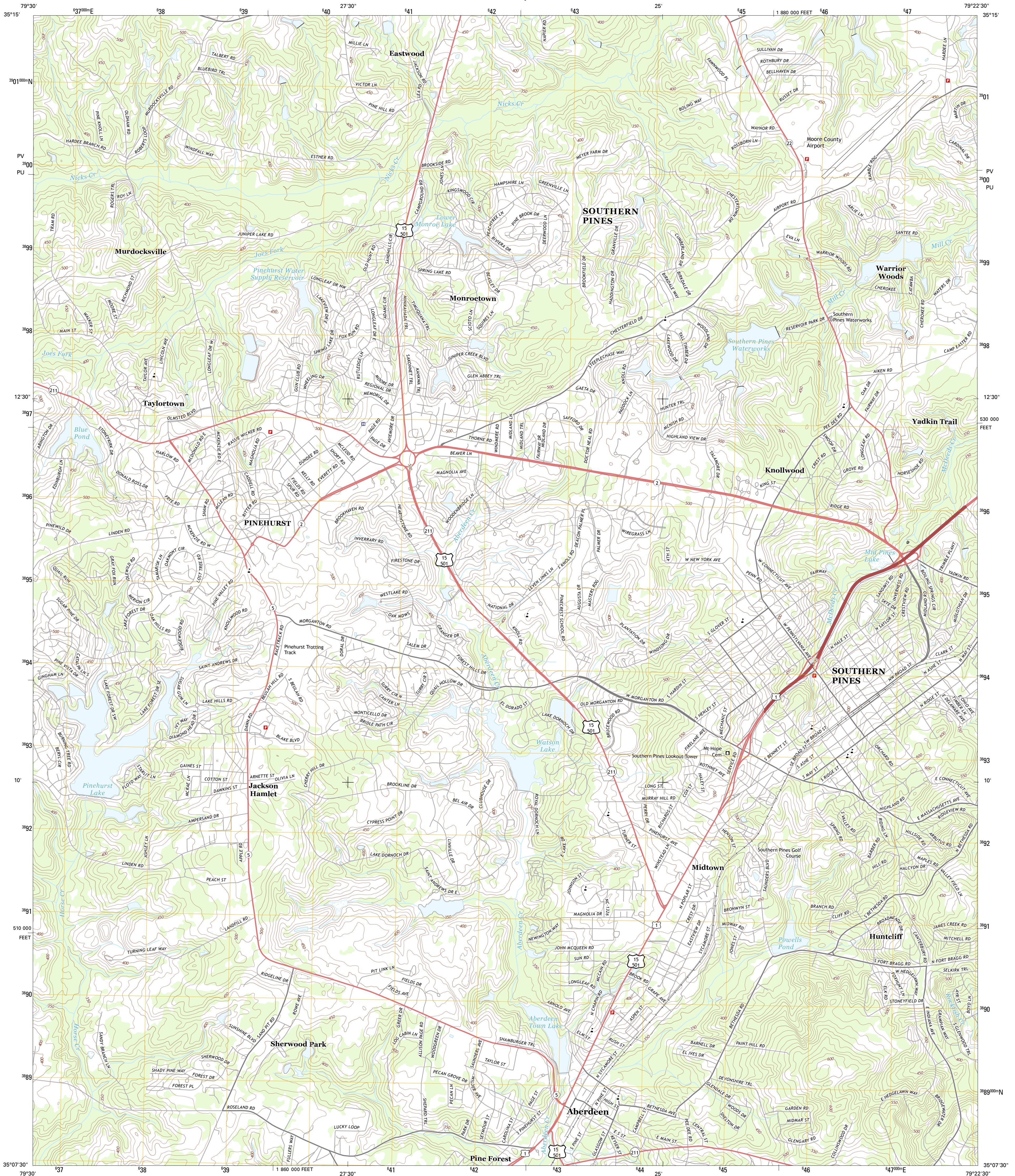




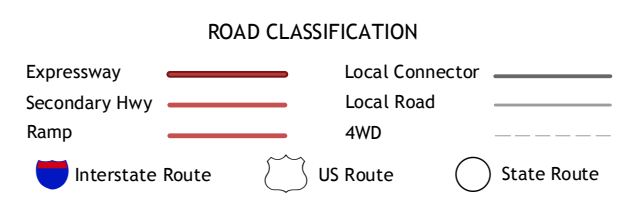
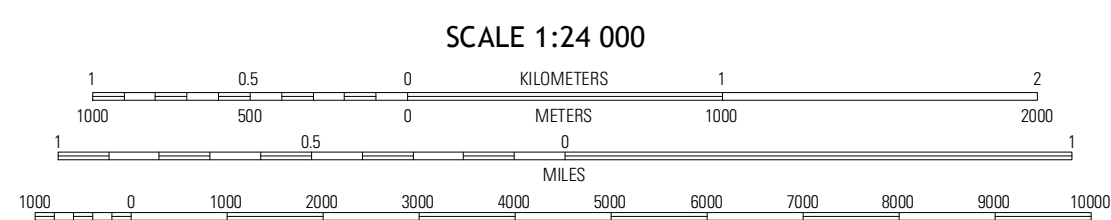
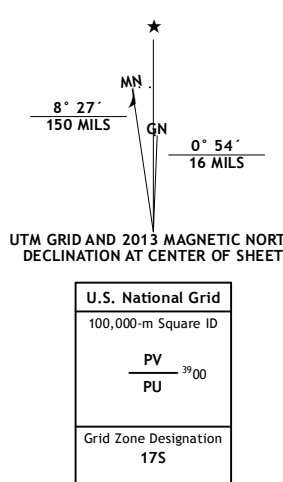
U.S. DEPARTMENT OF THE INTERIOR  
U. S. GEOLOGICAL SURVEY



SOUTHERN PINES QUADRANGLE  
NORTH CAROLINA-MOORE CO.  
7.5-MINUTE SERIES



Produced by the United States Geological Survey  
North American Datum of 1983 (NAD83)  
World Geodetic System of 1984 (WGS84) Projection and  
1 000-meter grid: Universal Transverse Mercator, Zone 17S  
10 000-foot ticks: North Carolina Coordinate System of 1983



QUADRANGLE LOCATION		
Zinn Grove	Carthage	Vass
West End	Southern Pines	Niagum
Hoffman	Pinebluff	McClain

ADJOINING 7.5 QUADRANGLES

SOUTHERN PINES, NC  
2013