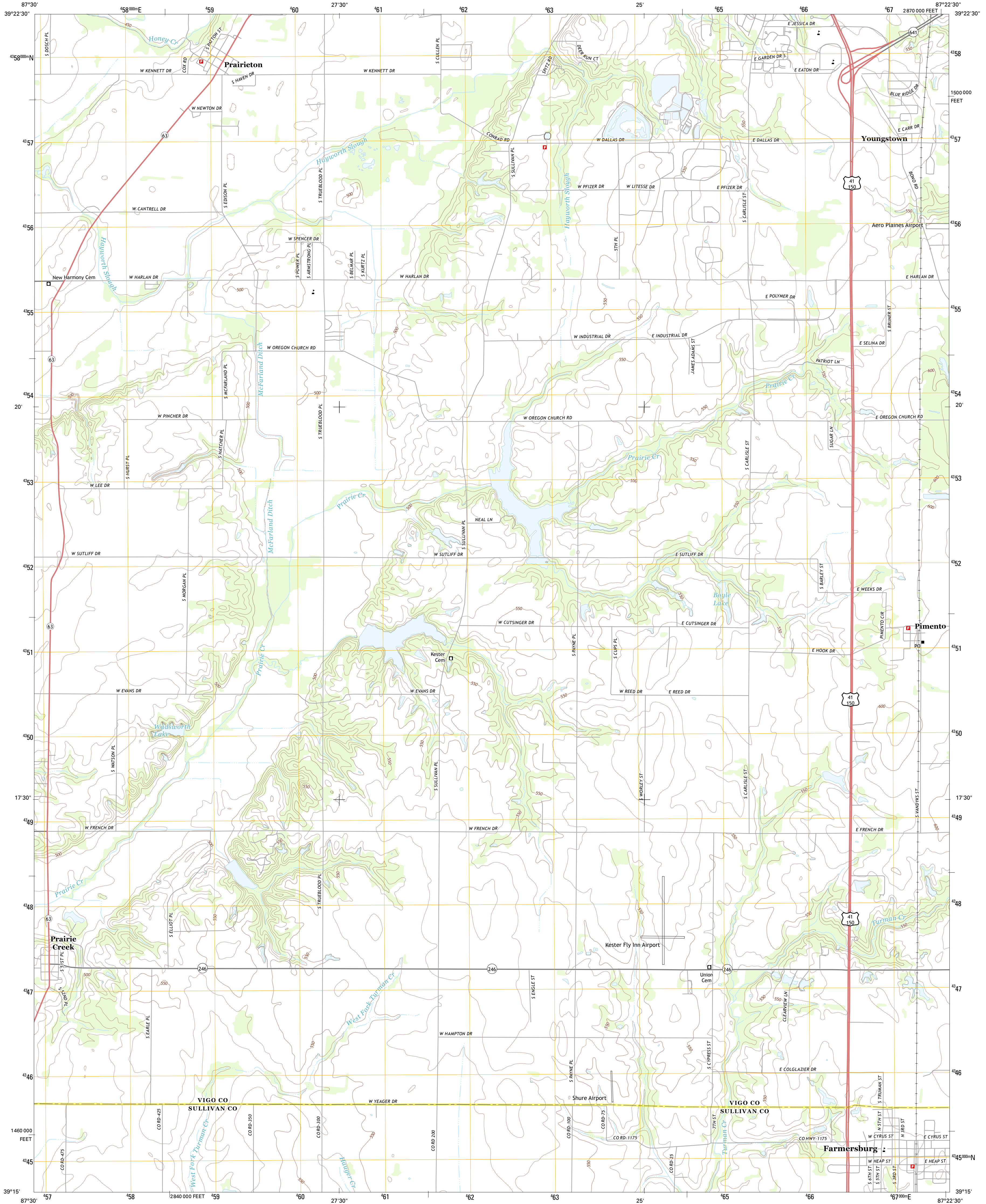




U.S. DEPARTMENT OF THE INTERIOR
U. S. GEOLOGICAL SURVEY

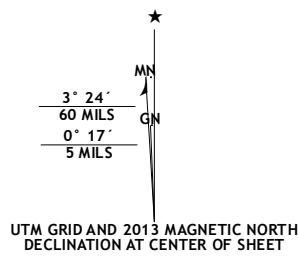


PIMENTO QUADRANGLE
INDIANA
7.5-MINUTE SERIES

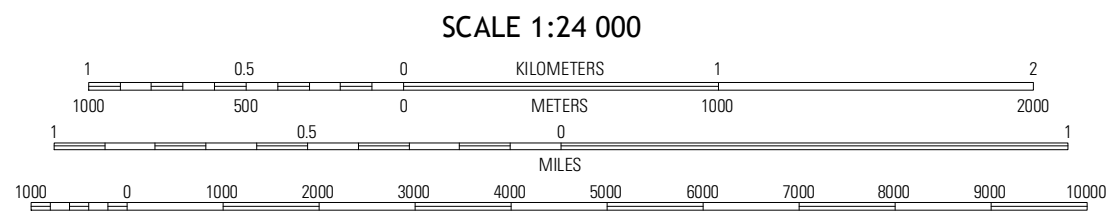


Produced by the United States Geological Survey
North American Datum of 1983 (NAD83)
World Geodetic System of 1984 (WGS84) Projection and
1 000-meter grid: Universal Transverse Mercator, Zone 16S
10 000-foot ticks: Indiana Coordinate System of 1983 (west zone)

Imagery.....NAIP, June 2012
Roads.....©2006-2012 TomTom
Names.....GNIS, 2012
Hydrography.....National Hydrography Dataset, 2012
Contours.....National Elevation Dataset, 2004
Boundaries.....Census, IBGC, IBC, USGS, 1972-2012



U.S. National Grid
100,000-m Square ID
DJ
Grid Zone Designation
16S



CONTOUR INTERVAL 10 FEET
NORTH AMERICAN VERTICAL DATUM OF 1988
This map was produced to conform with the
National Geospatial Program US Topo Product Standard, 2011.
A metadata file associated with this product is draft version 0.6.11



Dennison	Terre Haute	Seelyville
Hutton	Pimento	Lewis
Fairbanks	Shelburn	Hymers

ADJOINING 7.5' QUADRANGLES

ROAD CLASSIFICATION
Expressway
Secondary Hwy
Ramp
Local Connector
Local Road
4WD
US Route
State Route

PIMENTO, IN
2013